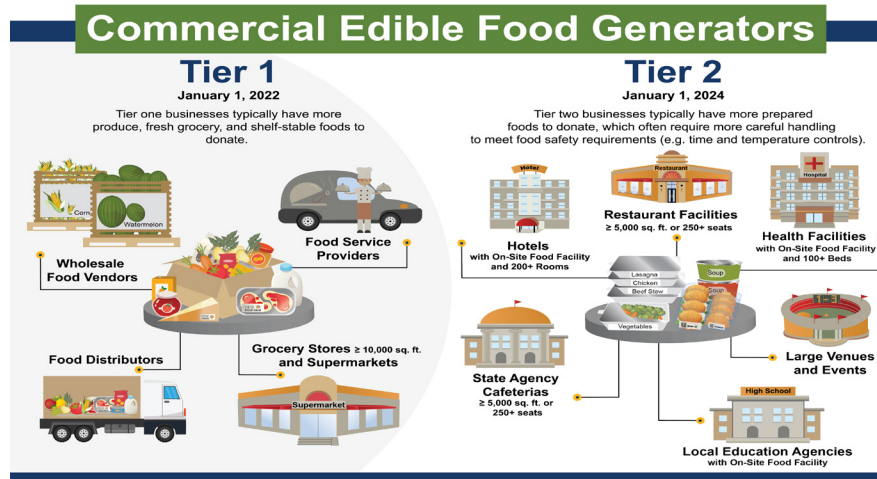


Edible Food Recovery Requirements



As part of Senate Bill (SB) 1383 compliance, starting January 1, 2022 Tier 1 businesses (supermarkets, grocery stores, food distributors) are required to donate and document leftover edible food. And Tier 2 business (schools, hotels with 200+ rooms, restaurant facilities 250+ seats, health facilities, and large venues) are required to donate and document left over edible food starting January 1 ,2024.

Edible Food

Edible food is defined as food that is safe to eat for human consumption. This may include non-perishable and unspoiled perishable food at the end of its shelf life.

Food Recovery

CalRecycle defines food recovery as collecting edible food that would otherwise go to waste and redistributing it to feed people in need. This type of food is salvaged from places such as restaurants, grocery stores, produce markets, and/or dining facilities and is distributed to local food programs.

The recovered food is edible but may not be sellable. Products that are at or past their “sell by” dates or are imperfect in any ways such as a bruised apple or day-old bread, for example, can be donated by grocery stores, food vendors, restaurants, and farmers markets. Often, restaurants and markets discard unused or unsold food into the waste stream.

Donating Food

The following local Food Recovery Organizations are available to collect edible food in Butte County. If you would like to partner with one or more food recovery organizations, refer to the list below.

NOTE: Businesses that source and contract with food recovery organics may receive tax benefits for their donations and are protected from liability lawsuits. Please speak to your tax advisor as well as refer to laws around donating food and the specific acts:

[California Good Samaritan Food Donation Act \(AB 1219\)](#)

[Bill Emerson Good Samaritan Food Donation Act since 1996](#)

Food Donation Options

In Butte County we have two FREE local food recovery programs that leverage their expertise and network of local food recovery partners to provide logistical support, including food pickup, tracking, and delivery.

530 Food Rescue Coalition

The 530 FRC aims to fill the gaps in the existing food recovery system for Tier 2 generators. They use a custom-built app to mobilize volunteers to transport food donations from any local edible food generator to non-profits.



To schedule a food donation use the following options: 530-285-5757 • info@530frs.org • www.530frc.org

Meal Connect

This program works with SB 1383 Tier 1 (see page 2) generators within the County. To get connected to a local organizations please use the Meal Connect website at www.MealConnect.org.



Donation Benefits

With the proper care and handling of food, we can feed more and waste less. The social, environmental, and economic benefits of participating in Food Donation Programs are boundless:

- **Reduce excess inventory.** Run a more efficient operation.
- **Save money.** Pay less on trash hauling costs associated with the transportation and maintenance of food to the landfill.
- **Compliance with state and local mandates.** Fulfill reporting requirements and avoid penalties.
- **Help end hunger.** Ensure that no food is ever wasted and that every American is well fed.
- **Waste less.** Reduce the impact on our landfills—and our planet.

Acceptable donations:

- Bread/bakery items .
- Deli, dairy, meat, and produce.
- Dry goods (canned, packaged, and shelf stable).

Rules:

- Food must be edible.
- Food may have expired sell by dates if it is still good.
- Food must be packaged in containers, boxes, or bags that do not need to be returned.
- Prepared food must be cold. No hot food at this time.
- Bulk and/or small donations are accepted.

[Click Here](#) to download the Local Food Donation Options Guide

Additional Resources:

[Safe Surplus Food Toolkit](#) (guidance for food facilities)

[Safe Surplus Food Donation Toolkit](#) (guidance for environmental health departments)