

NOTES:

1. BLUE REFLECTIVE PAVEMENT MARKERS SHALL BE PLACED 6" FROM CENTERLINE STRIPE ON THE SIDE NEAREST THE FIRE HYDRANT ON A TWO OR MULTI-LANE STREET.
2. TWO MARKERS ARE REQUIRED AT AN INTERSECTION HAVING A FIRE HYDRANT. THE MARKER SHALL BE PLACED 6" FROM THE EDGE OF THE CONTINUOUS LEFT TURN LANE LINE ON THE SIDE NEAREST THE FIRE HYDRANT.
3. FOR A FOUR LANE STREET WITH TURN LANE AT INTERSECTION THE MARKER SHALL BE PLACED 6" FROM THE NEAREST WHITE LANE LINE ON THE SIDE NEAREST THE FIRE HYDRANT.
4. PIPES SHALL BE FULLY RESTRAINED PER DETAIL W-03 UNLESS OTHERWISE APPROVED BY THE ENGINEER.
5. FIRE HYDRANT TRENCH AND BACKFILL REQUIREMENT OVER HYDRANT LATERAL SHALL ADHERE TO DETAIL W-15.
6. DIRECT BURIAL TRACING WIRE PER W-05.

NO.	REVISION DATE	BY
DRAWN BY: J. GINNEVER		
CHECKED BY: D. HARDEN		
SCALE: NONE		
DATE: 2/2/26		

FIRE HYDRANT

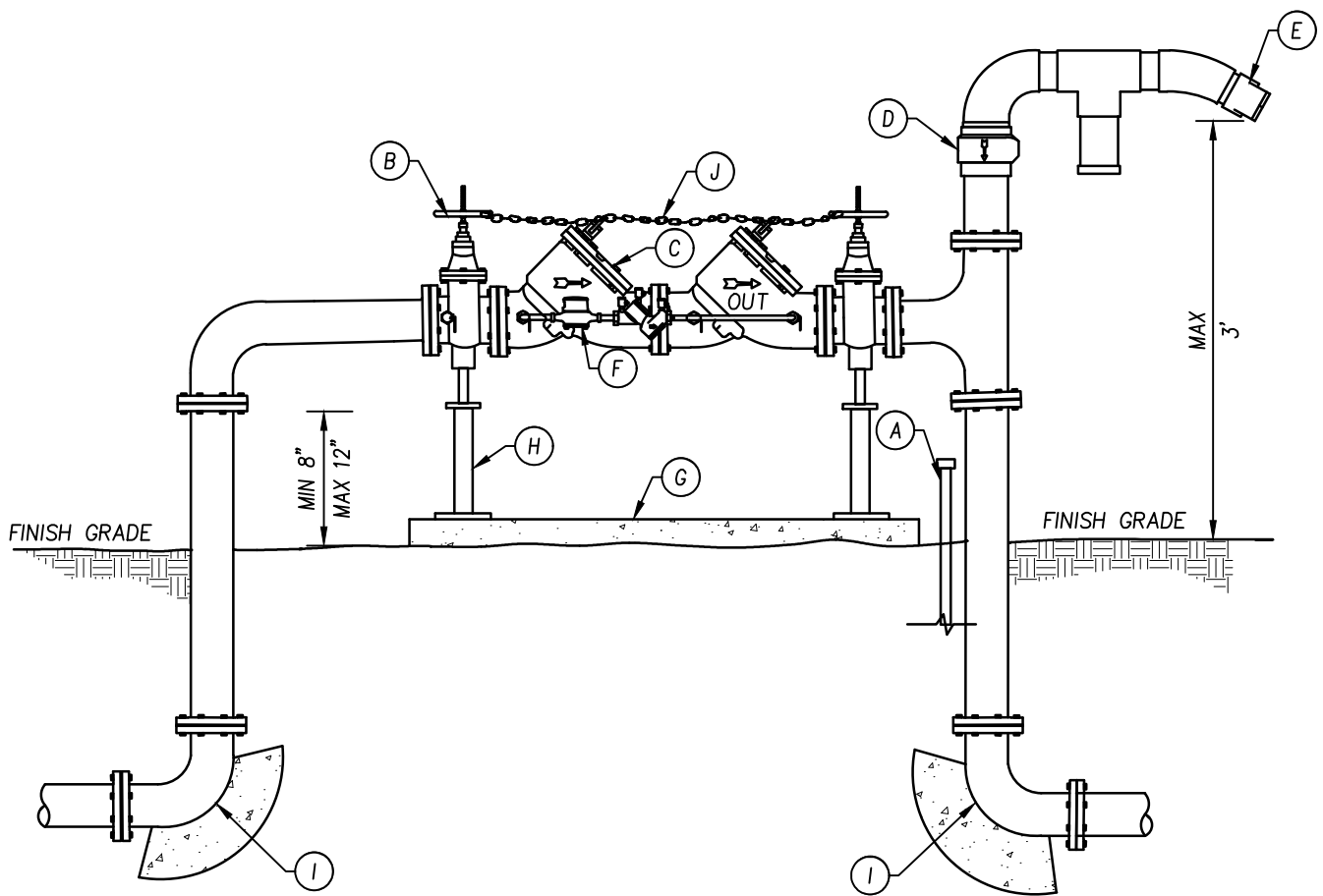
CITY OF GRIDLEY
DEPARTMENT OF PUBLIC WORKS

APPROVED BY:
DAVID HARDEN

D. Harden
CITY ENGINEER
RCE 84216



W-01



NOTES:

1. A VALVE SHOULD BE LOCATED A MINIMUM OF 3' UPSTREAM OF THE FIRST 90° ELBOW.
2. NO WATER SHALL BE DRAWN THROUGH THE BACKFLOW DEVICE UNTIL IT HAS BEEN TESTED BY THE CITY.
3. THE BACKFLOW DEVICE SHALL BE INSULATED WITH A CITY APPROVED FREEZE PROTECTION BAG.
4. FITTINGS SHALL BE FLANGE BY FLANGE OR RESTRAINED.
5. BURIED NUTS AND BOLTS, AND BARE METAL SHALL BE COATED WITH BITUMINOUS MATERIAL.
6. PIPE AND FITTINGS SHALL BE DUCTILE IRON.
7. BURIED PIPE AND FITTINGS SHALL BE WRAPPED AND SEALED WITH 10 MIL POLYETHYLENE.
8. ALL BACKFLOW DEVICES ALLOWED SHALL BE APPROVED BY FOUNDATION FOR CROSS-CONNECTION CONTROL AND HYDRAULIC RESEARCH OF THE UNIVERSITY OF SOUTHERN CALIFORNIA AND SHALL BE IN THE MOST RECENT LIST APPROVED ASSEMBLIES.
9. A REDUCED PRESSURE PRINCIPAL ASSEMBLY SHALL BE REQUIRED UNLESS AUTHORIZED BY THE CITY ENGINEER

LEGEND:

- A. VALVE TAMPER SWITCH CONDUCT TO BUILDING FIRE CONTROL ROOM
- B. OS & Y GATE VALVE (TYP)
- C. REDUCE PRESSURE BACKFLOW ASSEMBLY
- D. CHECK VALVE
- E. SIAMESE 45 DEGREE FDC WITH END CAPS
- F. WATER METER (PURCHASED THROUGH CITY IF REQUIRED)
- G. 4" THICK REINFORCED CONCRETE SLAB REINFORCED WITH A 6X6 WITH 1.4 MIN WIRE MESH
- H. SUPPORTS 2-TYP SHALL BE BOLTED DOWN WITH A MINIMUM OF TWO BOLTS EACH
- I. PIPE TO BE FULLY RESTRAINED OR THRUST BLOCK WITH APPROVAL FROM CITY ENGINEER (SEE DETAIL W-03)
- J. 1/4" NON CASE HARDENED CHAIN WITH BREAKAWAY LOCK BETWEEN VALVES PROVIDED BY THE CITY

NO.	REVISION DATE	BY
DRAWN BY: J. GINNEVER		
CHECKED BY: D. HARDEN		
SCALE: NONE		
DATE: 2/2/26		

FIRE ASSEMBLY WITH FDC

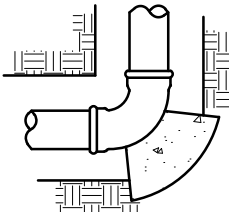
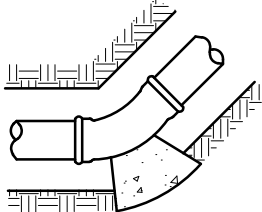
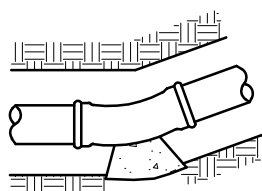
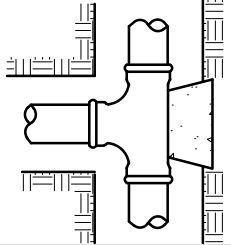
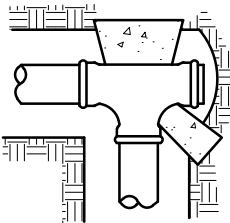
CITY OF GRIDLEY
DEPARTMENT OF PUBLIC WORKS

APPROVED BY:
DAVID HARDEN

D. Harden
CITY ENGINEER
RCE 84216





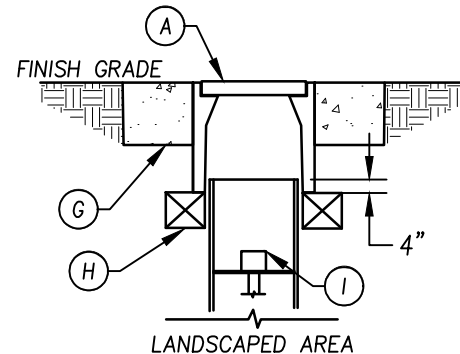
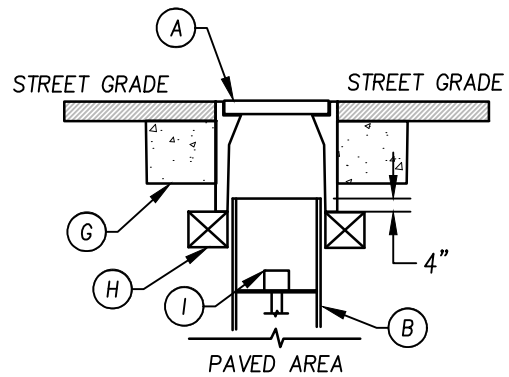
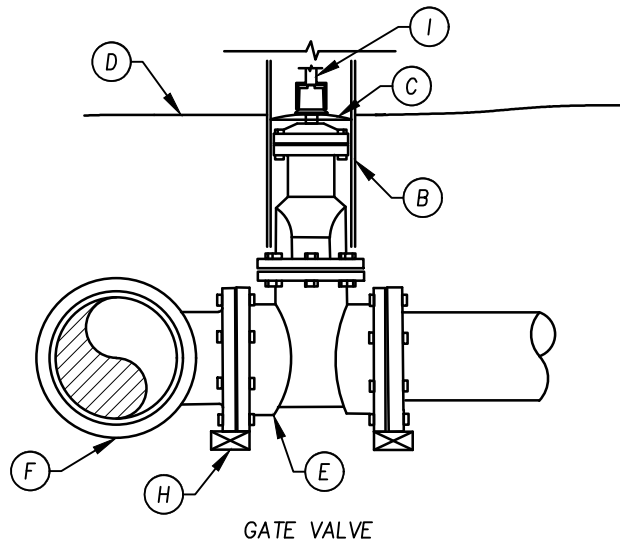
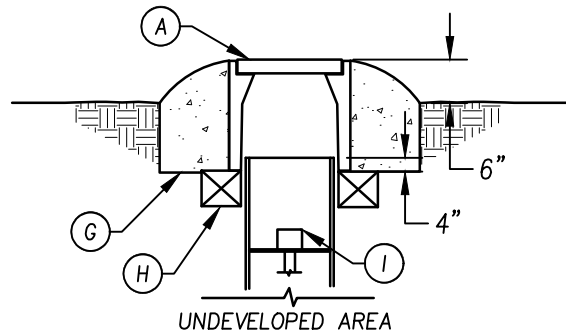
W-02

TYPE OF FITTING		90° BEND	45° BEND	11 1/2° OR 22 1/2° BEND				
TYPICAL INSTALLATION								
		REQUIRED BEARING – TOTAL SQUARE FEET						
SIZE OF PIPE	4"	2	1	1				
	6"	4	2	1				
	8"	7	4	2				
	10"	12	6	3				
	12"	16	10	5				
TYPE OF FITTING		TEE OR DEAD END	TEE WITH PLUG	REQUIRED LENGTH (FT) OF RESTRAINED JOINT PIPE				
TYPICAL INSTALLATION								
				PIPE SIZE				
					6"	8"	10"	12"
				90° BEND	29	38	45	52
				45° BEND	12	16	19	22
		REQUIRED BEARING – TOTAL SQUARE FEET		22 1/2° BEND	6	8	9	11
SIZE OF PIPE	4"	2	2	11 1/4° BEND	3	4	5	6
	6"	3	4	TEE WITH PLUG	61	80	96	112
	8"	5	7					
	10"	8	12	TEE (RUN LENGTH 10FT)	50	69	84	101
	12"	12	16					

NOTES:

1. ALL JOINTS AND PIPE LENGTHS SHALL BE FULLY RESTRAINED. THRUST BLOCKS SHALL ONLY BE USED WITH PRIOR APPROVAL BY THE CITY, EXCEPT SHALL BE USED ON FIRE HYDRANT INSTALLATION.
2. INSTALL FULL LENGTH JOINTS WITH TOTAL LENGTH EQUAL TO OR GREATER THAN SHOWN IN THE REQUIRED LENGTH OF RESTRAINED JOINT PIPE TABLE.
3. THRUST BLOCKS TO BE CONSTRUCTED OF MINOR CONCRETE.
4. AREAS GIVEN ARE FOR CLASS 150 PIPE AT TEST PRESSURE OF 150 P.S.I. IN SOIL WITH 2,000 P.S.F. BEARING CAPACITY. INSTALLATIONS USING DIFFERENT PIPE, TEST PRESSURES, AND/OR SOIL TYPES SHOULD ADJUST AREAS ACCORDINGLY, SUBJECT TO APPROVAL OF ENGINEER.
5. BLOCKS TO BE POURED AGAINST UNDISTURBED SOIL.
6. JOINTS TO BE KEPT CLEAR OF CONCRETE.
7. BLOCKS TO BE IN PLACE 7 (SEVEN) DAYS BEFORE TESTING.
8. ALL PLUGS SHALL BE SECURED WITH THRUST BLOCKS.

NO.	REVISION DATE	BY	<h2 style="text-align: center;">THRUST BLOCKS</h2>	APPROVED BY: DAVID HARDEN	
					
DRAWN BY: J. GINNEVER			<h2 style="text-align: center;">CITY OF GRIDLEY</h2> <p style="text-align: center;">DEPARTMENT OF PUBLIC WORKS</p>	CITY ENGINEER RCE 84216	
CHECKED BY: D. HARDEN				<h1 style="text-align: center;">W-03</h1>	
SCALE: NONE					
DATE: 2/2/26					



LEGEND:

- A. CONCRETE VALVE BOX WITH METAL LID MARKED WATER
- B. 8" Ø RISER STOCK (PVC)
- C. RISER ALIGNER
- D. PLASTIC BACKFILL TAPE
- E. GATE VALVE
- F. DUCTILE IRON TEE
- G. CONCRETE COLLAR (SEE NOTES)
- H. CONCRETE BLOCK (SEE NOTES)
- I. VALVE EXTENSION, WHERE REQUIRED

NOTES:

1. ALL GATE VALVES SHALL BE CENTERED IN A ONE PIECE RISER STOCK WITH THE USE OF A RISER ALIGNER.
2. OPERATOR NUTS DEEPER THAN 40" FROM FINISH GRADE SHALL REQUIRE A VALVE NUT EXTENSION 2' MINIMUM IN LENGTH.
3. VALVE BOXES LOCATED IN A PAVED AREA SHALL BE PLACED IN A 12" X 12" DEEP CONCRETE COLLAR A MINIMUM OF 2" BELOW PAVEMENT.
4. VALVE BOXES LOCATED IN A LANDSCAPED AREA SHALL BE PLACED IN A 6" X 6" CONCRETE COLLAR AT FINISHED GRADE.
5. VALVE BOXES LOCATED IN AN UNDEVELOPED AREA SHALL BE PLACED IN A 12" DEEP BY 6" WIDE CONCRETE COLLAR 6" ABOVE GRADE.
6. INSTALL (4" X 4" CONCRETE BLOCK) UNDER ENTIRE PERIMETER OF BOX OR COMPACTED AB.
7. VALVES AND FITTINGS SHALL BE WRAPPED AND SEALED IN 10 MIL POLYETHYLENE.
8. VALVE RISER STOCK SHALL BE A MINIMUM OF 4" INSIDE VALVE BOX.
9. TRACING WIRE SHALL BE CONTINUOUS BETWEEN MAINLINE VALVE BOXES AND FIRE HYDRANTS. IT SHALL BE ATTACHED TO THE TOP OF THE PIPE WITH 10 MIL VINYL TAPE EVERY FEET.
10. OPERATING NUT EXTENSION W/ 7" DIA. PLATE WASHER WELDED TO EXTENSION AT MIDPOINT OF ROD. (MIN LENGTH OF EXTENSION ROD SHALL BE 2')
11. AN OPERATING NUT SHALL BE DRILLED AND TAPPED FOR 2 (1/4" DIA) SCREWS. SET SCREW TO EXTEND 1/8" INTO VALVE NUT.
12. VALVE BOX SHALL BE CHRISTY G5, BES G5 9 1/2" TRAFFIC BOX TYPE K-6016 OR APPROVED EQUAL MARKED WATER.
13. DIRECT BURIAL TRACING WIRE PER W-05.

NO.	REVISION DATE	BY
DRAWN BY: J. GINNEVER		
CHECKED BY: D. HARDEN		
SCALE: NONE		
DATE: 2/2/26		

GATE VALVE & BOX

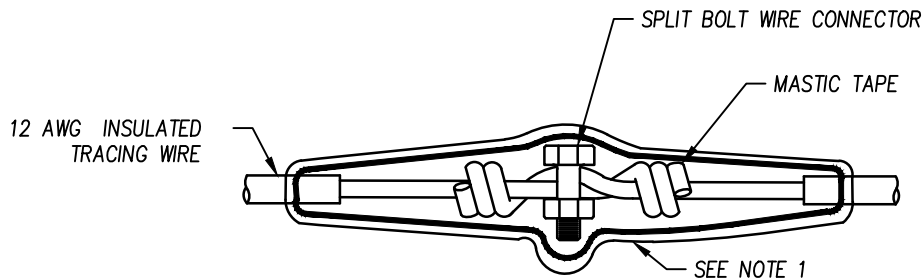
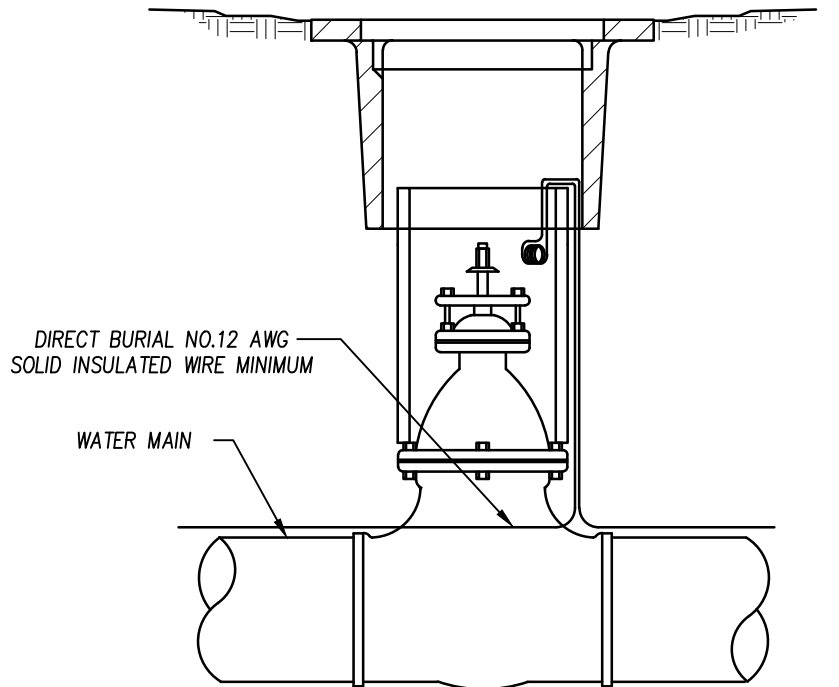
CITY OF GRIDLEY
DEPARTMENT OF PUBLIC WORKS

APPROVED BY:
DAVID HARDEN

David Harden
CITY ENGINEER
RCE 84216



W-04



SPLICE DETAIL

NOTES:

1. TWIST THE WIRE A MINIMUM OF 2 TIMES ON EACH END. INSTALL SPLIT BOLT CONNECTOR. SOLDER WIRE AND COVER THE ENTIRE SPLICE WITH 10 MIL VINYL TAPE. WIRE SPLICES SHALL BE LOCATED WITHIN A VALVE BOX.
2. 24" TRACING WIRE COILED IN BOX.
3. TRACING WIRE TO BE CONTINUOUS BETWEEN VALVE BOXES AND FIRE HYDRANTS, EXCEPT WHERE BOXES ARE WITHIN 10' OF PIPE INTERSECTION.
4. TRACING WIRE TO BE ATTACHED TO THE TOP OF THE PIPE WITH 10 MIL VINYL TAPE EVERY 5'.
5. TRACING WIRES THROUGH VALVE BOX SHALL BE PLACED OUTSIDE OF RISER, BUT INSIDE THE BOX.
6. TRACING WIRE IN MANHOLES AND VAULTS SHALL BE ATTACHED INSIDE THE FACILITY WITHIN ONE FOOT OF THE RIM.
7. LOCATING WIRE MUST BE TESTED FOR CONTINUITY & BE IN WORKING ORDER AFTER ALL UNDERGROUND WORK IS DONE AND PRIOR TO STREET PAVING.

NO.	REVISION DATE	BY
DRAWN BY: J. GINNEVER		
CHECKED BY: D. HARDEN		
SCALE: NONE		
DATE: 2/2/26		

LOCATING WIRE FOR WATER MAINS AND SERVICES

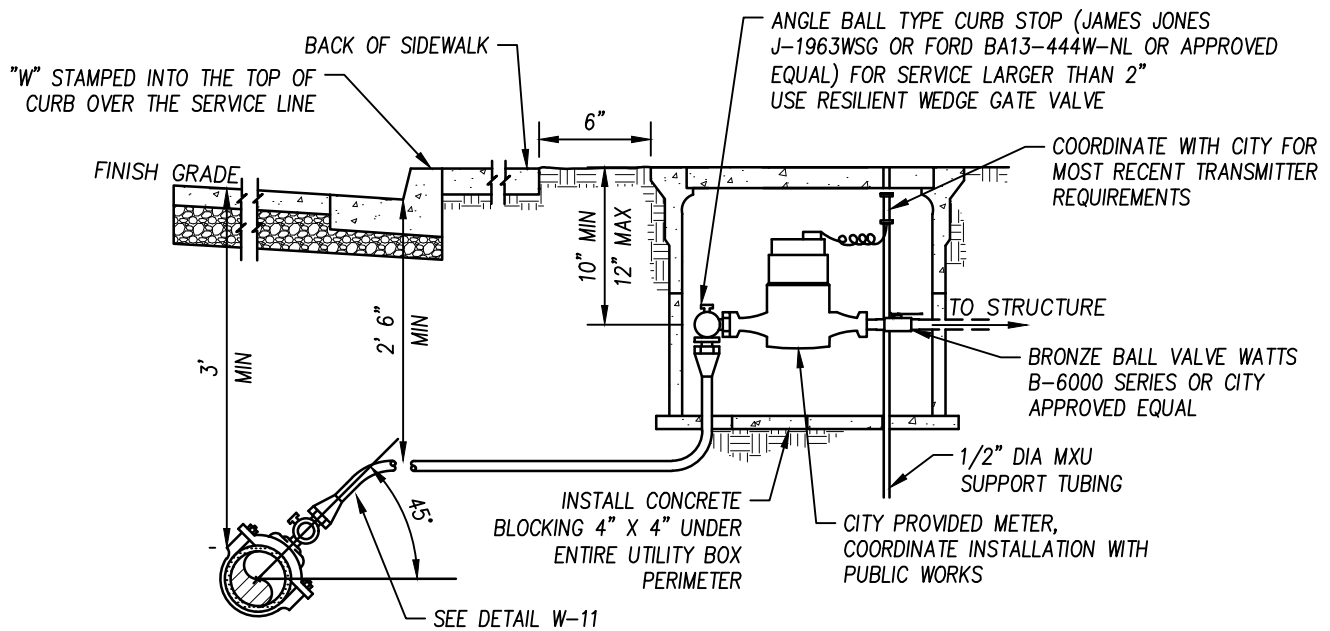
CITY OF GRIDLEY
DEPARTMENT OF PUBLIC WORKS

APPROVED BY:
DAVID HARDEN

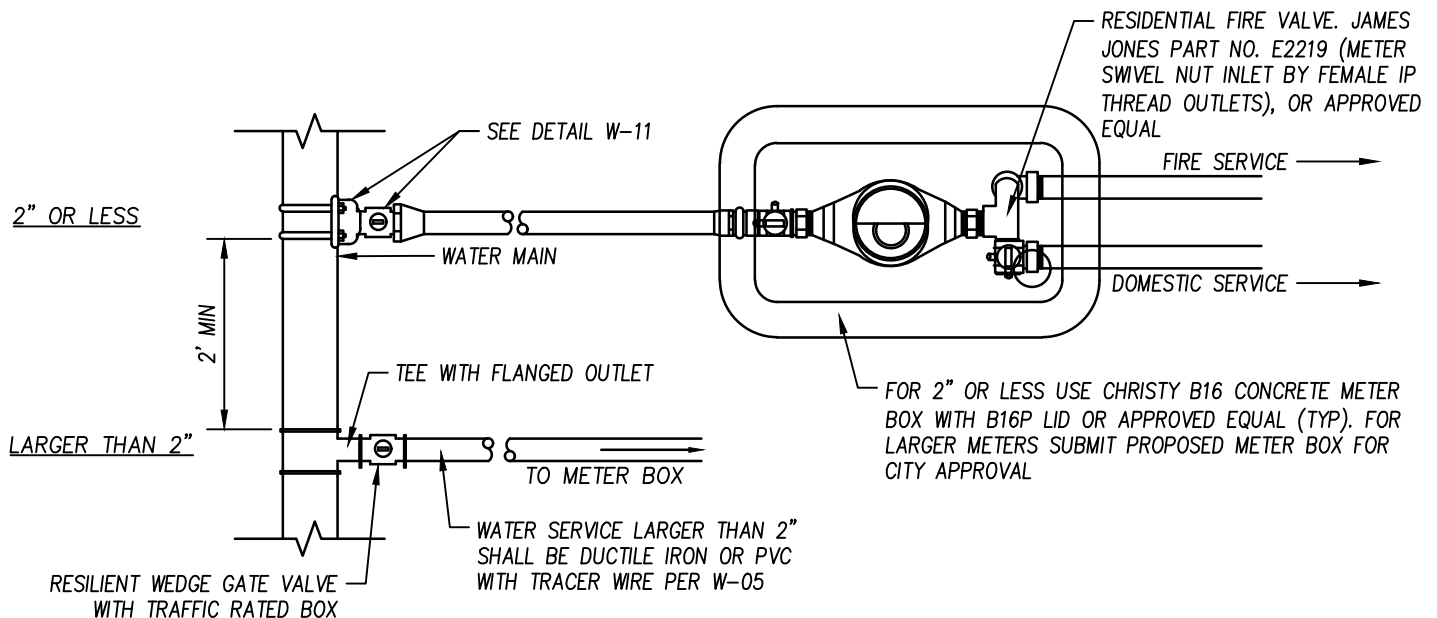
David Harden
CITY ENGINEER
RCE 84216



W-05



PROFILE



PLAN

NOTES:

1. LOCATE TYPICAL WATER SERVICE NEAR THE PROPERTY LINE
2. MINIMUM COVER FOR WATER MAIN SHALL BE 3' (3' 6" PREFERRED)
3. IF WATER SERVICE IS INCREASED AFTER THE METER, THE INCREASE MUST OCCUR A MIN OF THREE PIPE DIA LENGTHS AFTER THE METER

NO.	REVISION DATE	BY
DRAWN BY: J. GINNEVER		
CHECKED BY: D. HARDEN		
SCALE: NONE		
DATE: 2/2/26		

SINGLE WATER SERVICE MAIN CONNECTION

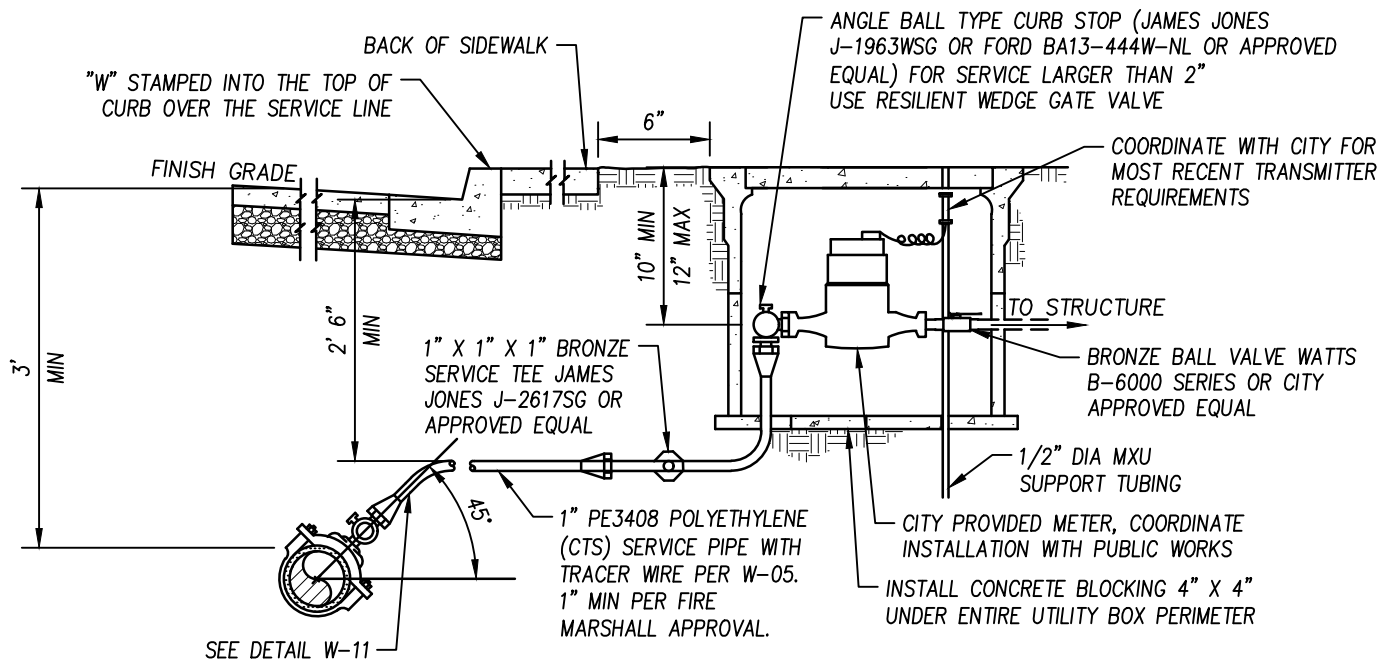
CITY OF GRIDLEY
DEPARTMENT OF PUBLIC WORKS

APPROVED BY:
DAVID HARDEN

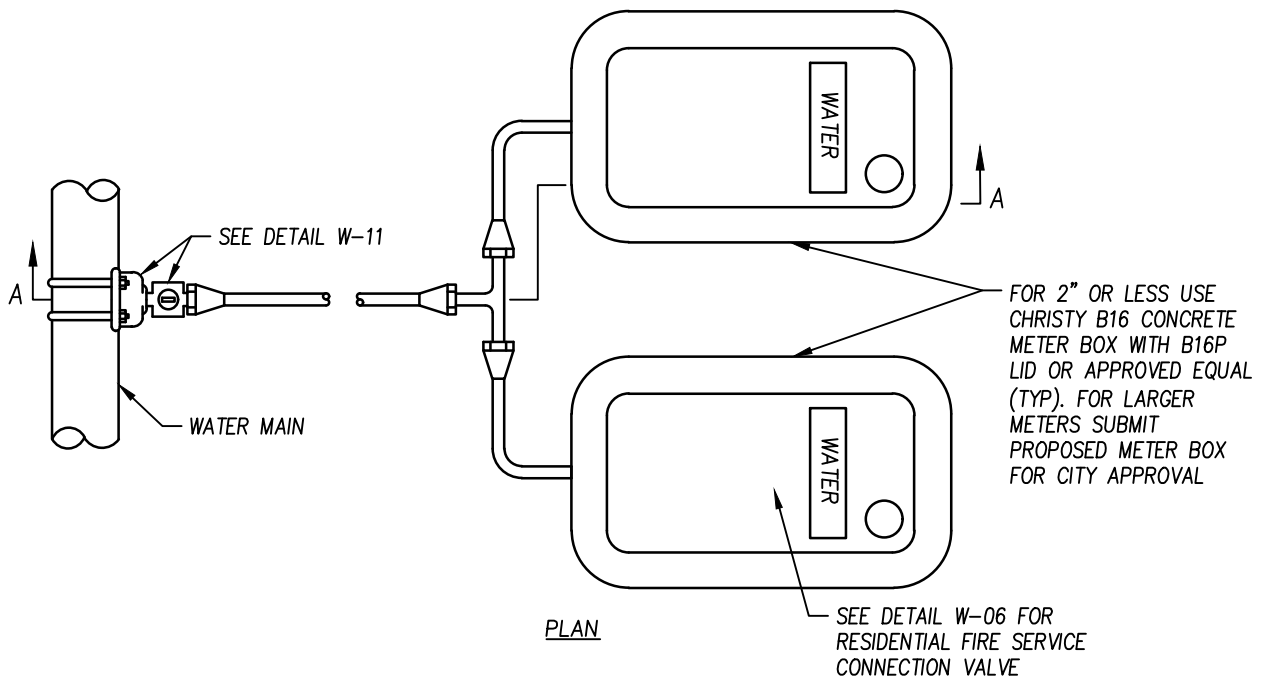
D. Harden
CITY ENGINEER
RCE 84216



W-06



PROFILE



PLAN

NOTES:

1. MINIMUM COVER FOR WATER SERVICE SHALL BE 3' (3' 6" PREFERRED)
2. LOCATE TYPICAL WATER SERVICE NEAR THE PROPERTY LINE
3. WATER SERVICE PIPE SIZE MAY BE INCREASED AFTER THE METER TO MEET DEMAND FOR DOMESTIC AND FIRE SERVICES IN THE FOLLOWING AREAS: (1) LOW PRESSURE AREAS WITHIN WATER ZONES (2) HILLSIDE SUBDIVISIONS (3) CUSTOM HOME SUBDIVISIONS
4. IF WATER SERVICE IS INCREASED AFTER THE METER, THE INCREASE MUST OCCUR A MIN OF THREE PIPE DIA LENGTHS AFTER THE METER

NO.	REVISION DATE	BY
DRAWN BY: J. GINNEVER		
CHECKED BY: D. HARDEN		
SCALE: NONE		
DATE: 2/2/26		

DOUBLE WATER SERVICE MAIN CONNECTION

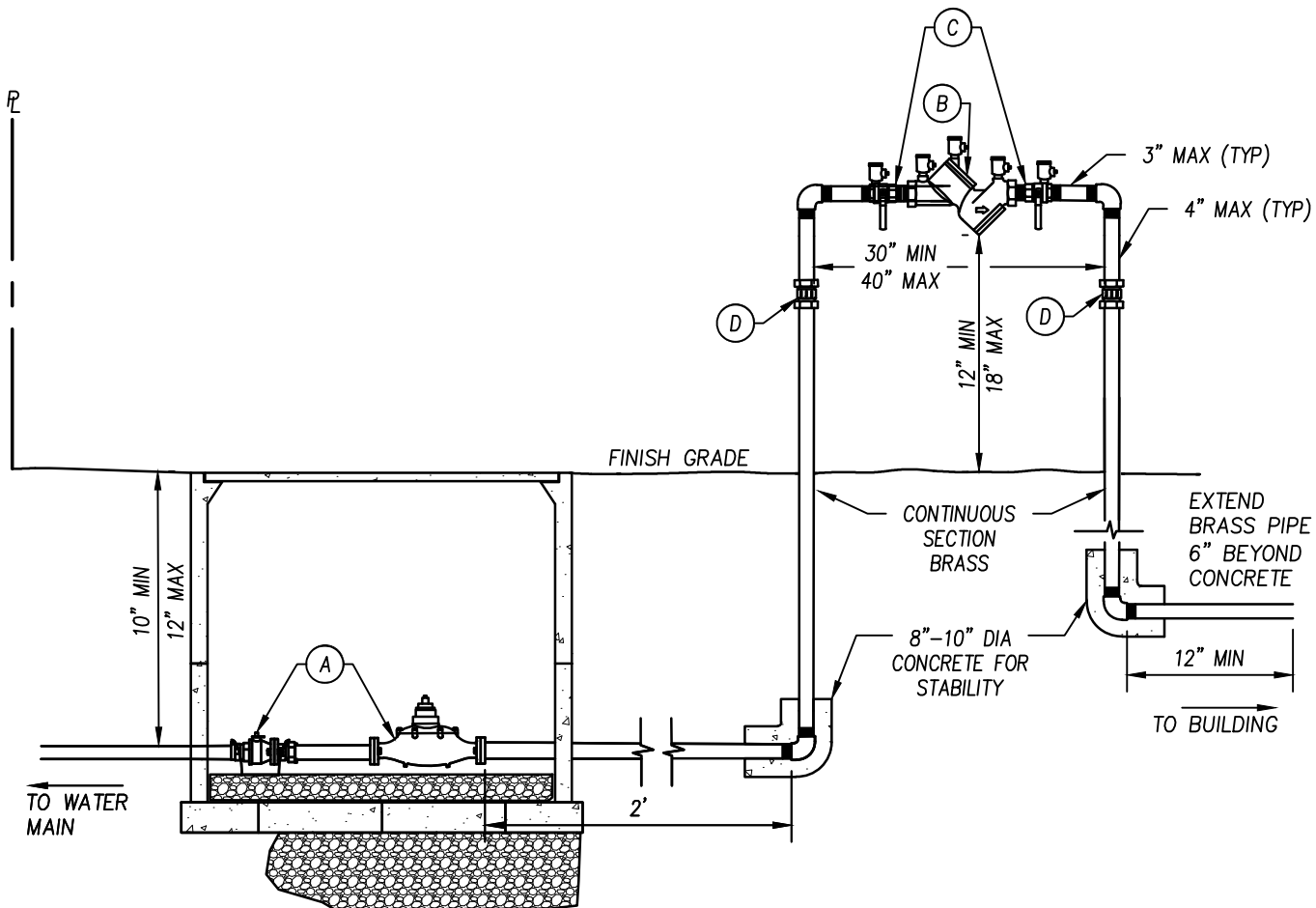
CITY OF GRIDLEY
DEPARTMENT OF PUBLIC WORKS

APPROVED BY:
DAVID HARDEN

D. Harden
CITY ENGINEER
RCE 84216



W-07



LEGEND:

- A. INSTALL PER W-06
- B. ZURN WILKINS 975 XL BACKFLOW DEVICE
- C. BALL VALVES
- D. INSTALL (2) UNIONS NOT CONNECTED TO REGULATOR

NOTES:

1. NO WATER SHALL BE DRAWN THROUGH THE BACKFLOW DEVICE UNTIL IT HAS BEEN TESTED BY THE CITY.
2. CONTRACTOR SHALL LAY 3/4" DRAIN ROCK TO 12" DEPTH UNDER CONCRETE BLOCKING AT METER SETTER.
3. WATER METERS SHALL BE PURCHASED THROUGH THE CITY.
4. WATER METERS WILL BE INSTALLED BY THE CITY AND COORDINATED WITH THE CITY FOR INSTALLATION.
5. THE BACKFLOW DEVICE SHALL BE INSULATED WITH A CITY APPROVED FREEZE PROTECTION BAG.
6. CURBSTOP SHALL BE BETWEEN 12" & 18" OF EASEMENT.
7. FITTINGS AND PIPING SHALL BE BRASS.
8. BURIED PIPE AND FITTINGS SHALL BE WRAPPED WITH 10 MIL POLYETHYLENE OR APPROVED EQUAL.
9. ALL BACKFLOW DEVICES ALLOWED SHALL BE APPROVED BY FOUNDATION FOR CROSS-CONNECTION CONTROL AND HYDRAULIC RESEARCH OF THE UNIVERSITY OF SOUTHERN CALIFORNIA AND SHALL BE IN THE MOST RECENT LIST OF APPROVED ASSEMBLIES.
10. 1" METER ALLOWED FOR IRRIGATION USE ONLY, UNLESS APPROVED BY CITY ENGINEER
11. REDUCE PRESSURE PRINCIPAL ASSEMBLY REQUIRED, UNLESS AUTHORIZED BY ENGINEER

NO.	REVISION DATE	BY
DRAWN BY: J. GINNEVER		
CHECKED BY: D. HARDEN		
SCALE: NONE		
DATE: 2/2/26		

COMMERCIAL & IRRIGATION SERVICE LINE

(FOR 1", 1.5", AND 2" METERS)

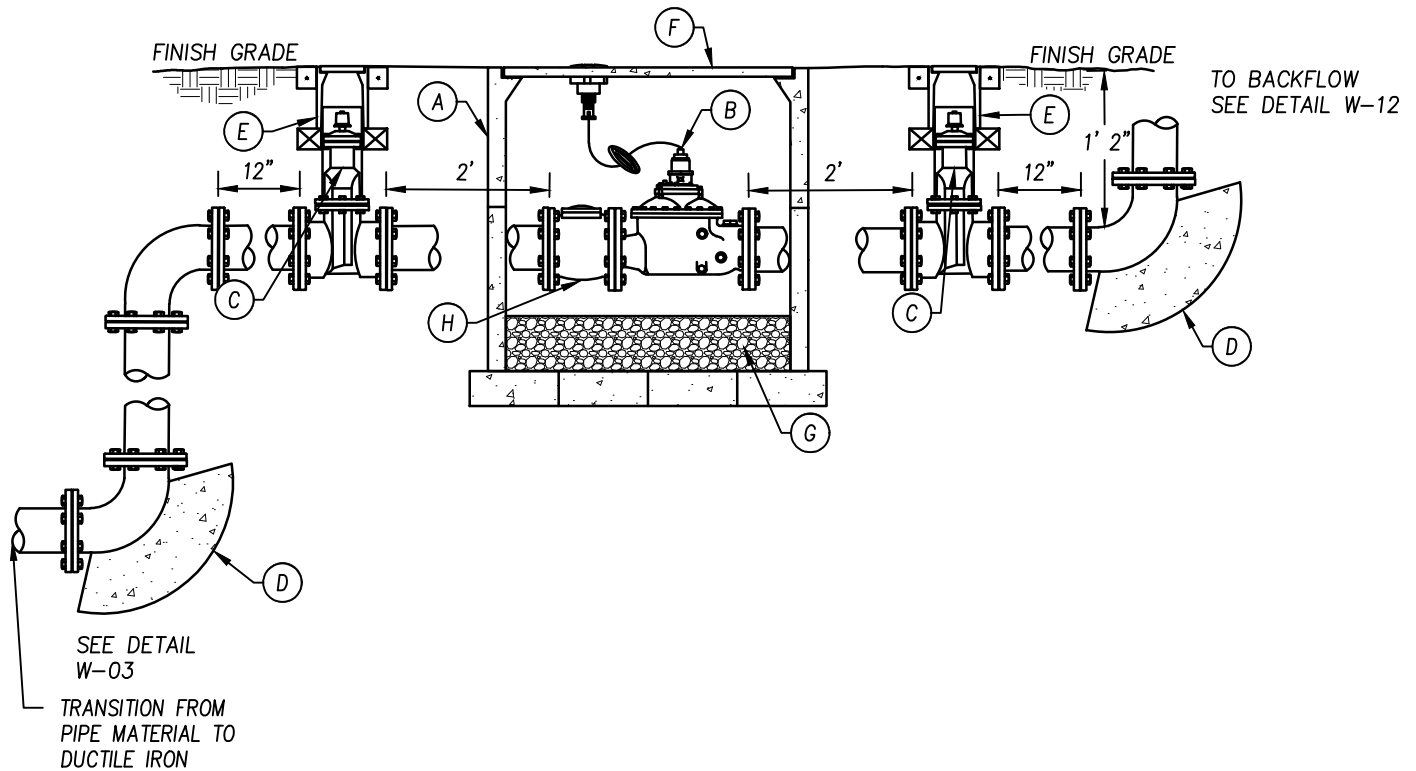
CITY OF GRIDLEY
DEPARTMENT OF PUBLIC WORKS

APPROVED BY:
DAVID HARDEN

D. Harden
CITY ENGINEER
RCE 84216



W-08



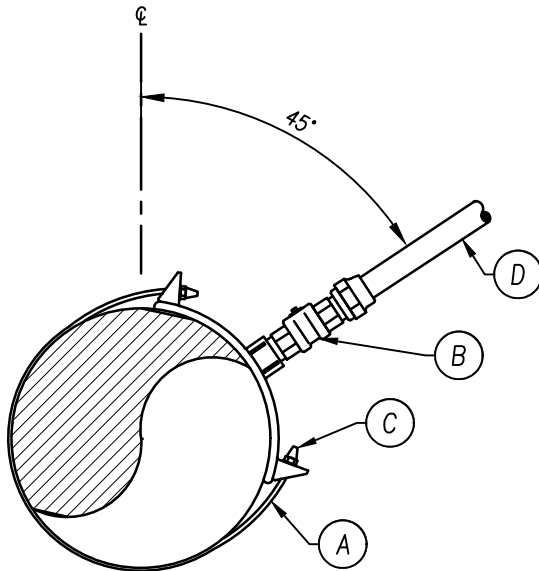
LEGEND:

- A. METER BOX TO BE SIZED AND SUBMITTED PRIOR TO INSTALL BY CITY APPROVAL.
- B. METER (PURCHASED THROUGH CITY), INSTALL IDLER SPOOL DURING INSTALLATION OF METER BOX.
- C. GATE VALVE.
- D. PIPE TO BE FULLY RESTRAINED OR THRUST BLOCK APPROVAL FROM CITY ENGINEER (SEE DETAIL W-03)
- E. VALVE AND BOX (SEE DETAIL W-04).
- F. METAL TRAFFIC LID WELD MARKED "GRIDLEY WATER."
- G. 3/4" DRAIN ROCK 8" IN DEPTH.
- H. FLANGE COUPLING ADAPTER

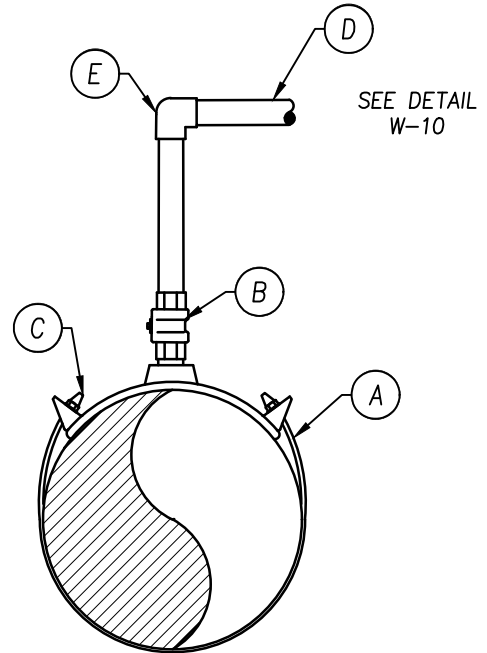
NOTES:

- 1. PIPE SHALL BE DUCTILE IRON UNLESS OTHERWISE STATED.
- 2. INSTALL CONCRETE BLOCKING 4" X 4" UNDER ENTIRE UTILITY BOX PERIMETER.
- 3. PIPE AND FITTINGS SHALL BE WRAPPED WITH 10 MIL POLYETHYLENE
- 4. USE CITY APPROVED RESTRAINED JOINTS OR FLANGED SPOOLS.
- 5. WATER METER SHALL BE PURCHASED THROUGH THE CITY.
- 6. INSTALL TRACER WIRE, SEE DETAIL W-05

NO.	REVISION DATE	BY	LARGE COMMERCIAL WATER METER INSTALLATION	APPROVED BY: DAVID HARDEN	 GRIDLEY CALIFORNIA
DRAWN BY: J. GINNEVER			CITY OF GRIDLEY DEPARTMENT OF PUBLIC WORKS	 CITY ENGINEER RCE 84216	W-09
CHECKED BY: D. HARDEN					
SCALE: NONE					
DATE: 2/2/26					



DOUBLE STRAP PIPE
SADDLE





ARV SADDLE

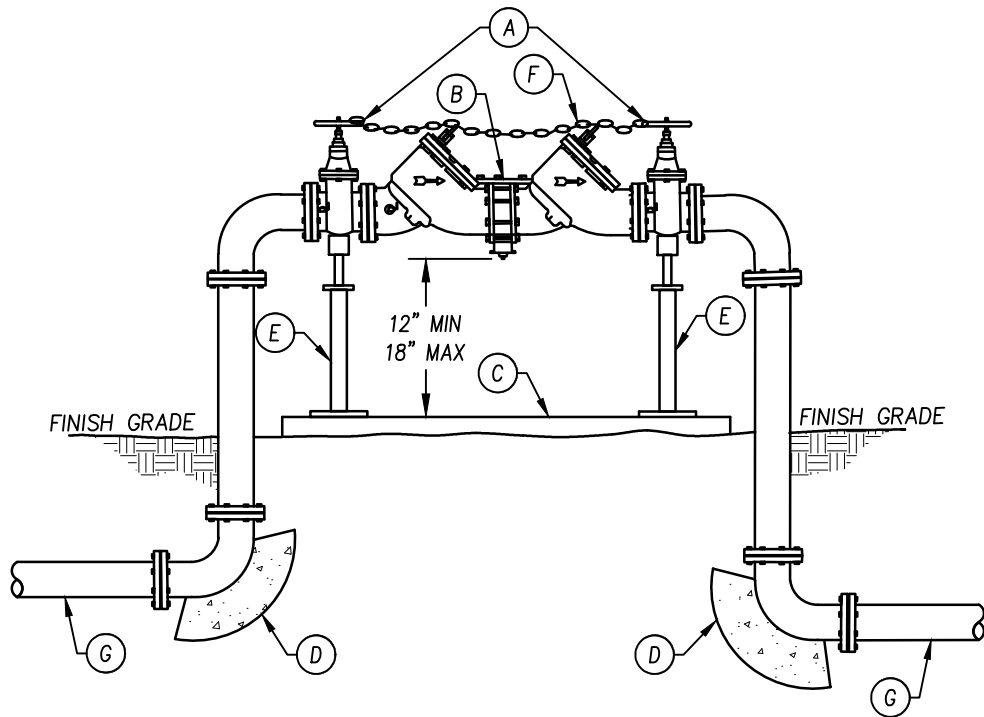
LEGEND:

- A. FULL BODY SUPPORT SADDLE (FORD BOLTED S90 OR APPROVED EQUAL, SIZE 1" W/ FIP THREADS) ON PVC C900 WATER MAIN. USE STANDARD DOUBLE STRAP SADDLE ON OTHER PIPE MATERIALS
- B. BALL-TYPE COMPRESSION CORPORATION STOP (JAMES JONES E-1935SG 1" W/MIP THREADS OR EQUAL)
- C. ZINC CAPS ON ALL BOLTS (ONLY WITH NON-INSULATED CORPORATION STOP)
- D. 1" PE3408 POLYTHENE (CTS) SERVICE PIPE WITH TRACER WIRE PER W-05
- E. 90° BRASS FITTINGS

NOTES:

- 1. WRAP CORPORATION STOP AND COPPER SERVICE WITH 10 MIL POLYETHYLENE TAPE.
- 2. SADDLES SHALL BE WRAPPED IN 10 MIL POLYETHYLENE AND BACKFILLED WITH SAND.
- 3. CONNECTIONS LARGER THAN 3" SHALL BE CUT IN TEE OR CITY APPROVED ALTERNATIVE.
- 4. ANY HOT TAP SHALL BE APPROVED BY CITY ENGINEER AND PUBLIC WORKS STAFF
- 5. INSTALL TRACER WIRE SEE DETAILS W-05

NO.	REVISION DATE	BY	SADDLE DETAIL	APPROVED BY: DAVID HARDEN	
DRAWN BY: J. GINNEVER					
CHECKED BY: D. HARDEN			CITY OF GRIDLEY DEPARTMENT OF PUBLIC WORKS	CITY ENGINEER RCE 84216	
SCALE: NONE					
DATE: 2/2/26					



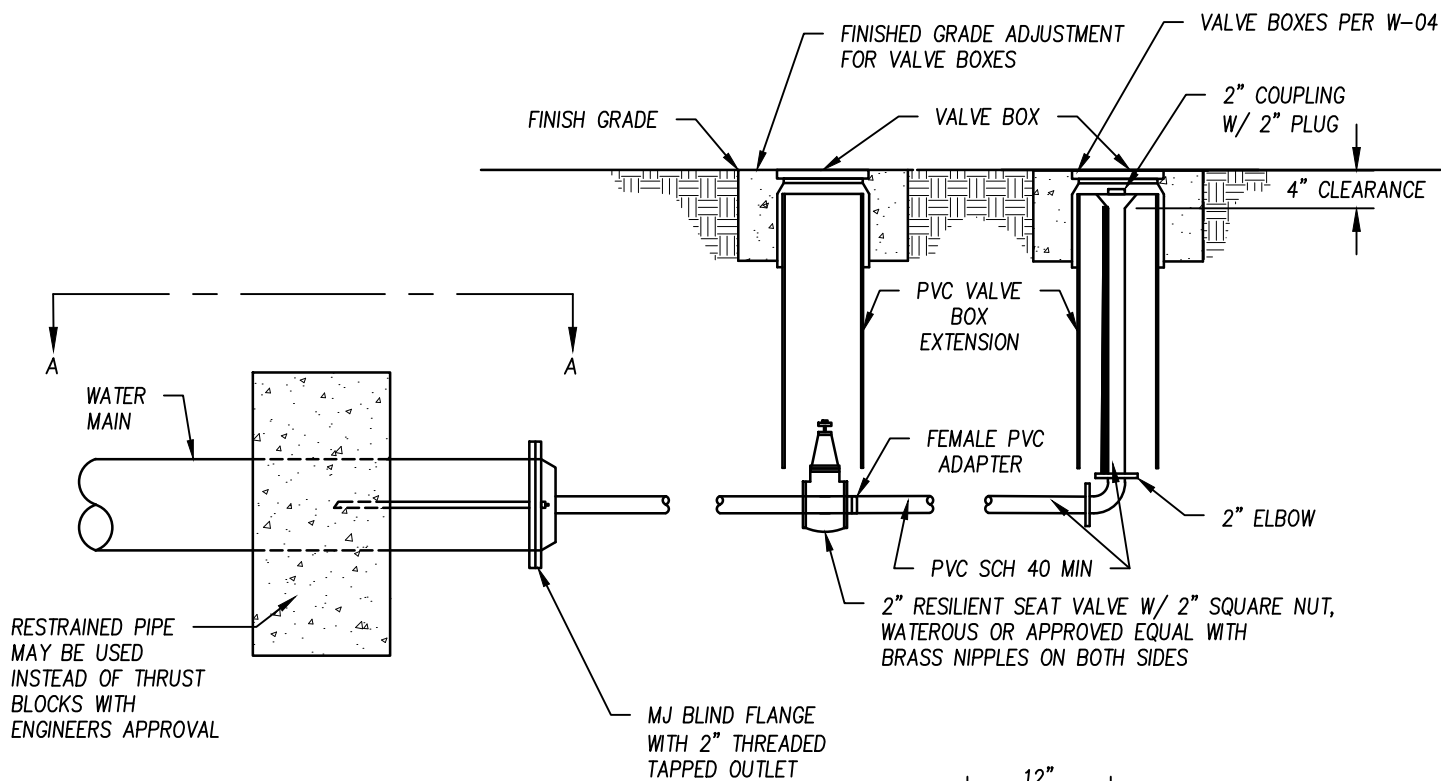
LEGEND:

- A. RESILIENT SEAT GATE VALVES
- B. REDUCED PRESSURE PRINCIPAL ASSEMBLY REQUIRED UNLESS AUTHORIZED BY ENGINEER
- C. 4" THICK CONCRETE SLAB REINFORCED WITH 6X6 W1.4 MIN WIRE MESH
- D. PIPE TO BE FULLY RESTRAINED OR THRUST BLOCK WITH APPROVAL FROM CITY ENGINEER (SEE DETAIL W-03)
- E. SUPPORT STANDS BOLTED INTO CONCRETE
- F. 1/4" NON-CASE HARDENED CHAIN WITH BREAKAWAY LOCK
- G. DUCTILE IRON SPOOLS SHALL BE 5X THE PIPE DIAMETER

NOTES:

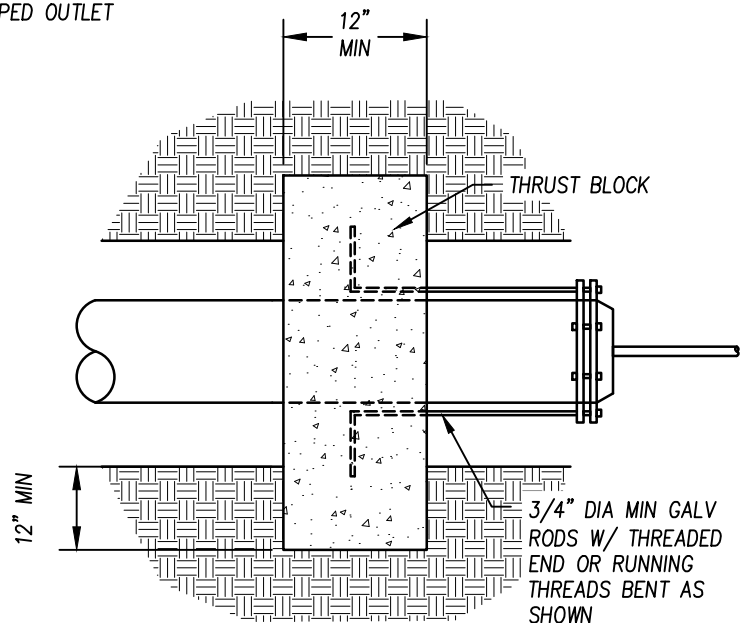
1. NO WATER SHALL BE DRAWN THROUGH THE BACKFLOW DEVICE UNTIL IT HAS BEEN TESTED AND APPROVED BY THE CITY.
2. PIPE SHALL BE DUCTILE IRON.
3. GATE VALVES SHALL BE RESILIENT SEAT.
4. PIPE AND FITTINGS SHALL BE WRAPPED WITH 10 MIL POLYETHYLENE.
5. USE CITY APPROVED RESTRAINED JOINTS OR FLANGED SPOOLS.
6. THE BACKFLOW DEVICE SHALL BE INSULATED WITH A CITY APPROVED FREEZE PROTECTION BAG.
7. ALL BACKFLOW DEVICES ALLOWED SHALL BE APPROVED BY FOUNDATION FOR CROSS-CONNECTION CONTROL AND HYDRAULIC RESEARCH OF THE UNIVERSITY OF SOUTHERN CALIFORNIA AND SHALL BE IN THE MOST RECENT LIST OF APPROVED ASSEMBLIES.

NO.	REVISION DATE	BY	3 IN. OR LARGER REDUCED PRESSURE BACKFLOW PREVENTER INSTALLATION CITY OF GRIDLEY DEPARTMENT OF PUBLIC WORKS	APPROVED BY: DAVID HARDEN  CITY ENGINEER RCE 84216	
DRAWN BY: J. GINNEVER					
CHECKED BY: D. HARDEN					
SCALE: NONE					
DATE: 2/2/26					
					W-12



NOTES:

1. IN THE CASE OF A PRESSURE TAP, A CORPORATION STOP, FORD, JONES OR APPROVED EQUAL SHALL BE USED AT THE MAIN
2. VALVE BOX COVERS TO BE CHRISTY G5 OR APPROVED EQUAL
3. RESTRAINED JOINTS IN LUE OF THRUST BLOCK IS ACCEPTABLE
4. INSTALL TRACER WIRE PER DETAIL W-05



VIEW A-A

NO.	REVISION DATE	BY
DRAWN BY: J. GINNEVER		
CHECKED BY: D. HARDEN		
SCALE: NONE		
DATE: 2/2/26		

2" BLOW OFF DEAD-END WATER MAIN

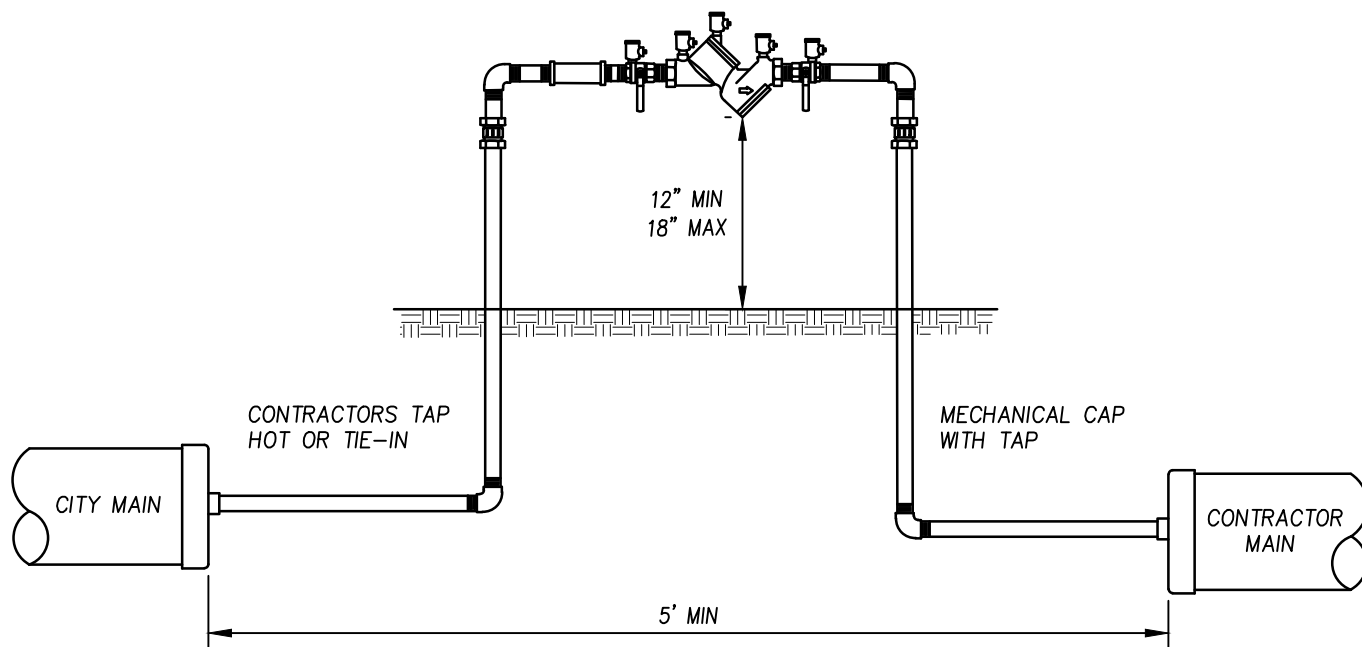
CITY OF GRIDLEY
DEPARTMENT OF PUBLIC WORKS

APPROVED BY:
DAVID HARDEN

D. Harden
CITY ENGINEER
RCE 84216



W-13



PRIOR TO CONNECTION TO THE CITY MAIN,
THE FOLLOWING CONDITIONS SHALL BE MET:

- A. PRESSURE TEST – PASSED
- B. CHLORINE TEST – PASSED
- C. TURBIDITY TEST – PASSED
- D. BACTERIA TEST – PASSED
- E. APPROVAL BY THE CITY ENGINEER

NOTES:

1. HOT TAP WILL NOT BE ALLOWED ON EXISTING STEEL PIPELINES NOR WHEN THE SERVICE LINE IS GREATER THAN 2/3 THE DIAMETER OF THE MAIN. HOT TAP IS ONLY ALLOWED IF APPROVED BY THE CITY.
2. WATER SHALL ONLY BE DRAWN INTO THE CONTRACTORS MAIN THROUGH A CITY APPROVED REDUCED PRESSURE TYPE BACKFLOW DEVICE WHICH HAS BEEN TESTED AND TAGGED BY THE CITY.
3. FINAL SYSTEM COMPONENTS NECESSARY FOR TIE-IN SHALL BE PRE-CHLORINATED AND PRE-FLUSHED IN THE PRESENCE OF THE PUBLIC WORKS STAFF
4. UPON COMPLETION OF THE CONDITIONS NOTED ABOVE AND WITH THE APPROVAL OF THE CITY ENGINEER, CONNECTION TO THE CITY SYSTEM MAY BE MADE. THE CITY INSPECTOR SHALL BE NOTIFIED 48 HOURS PRIOR TO THE START OF WORK.

NO.	REVISION DATE	BY
DRAWN BY: J. GINNEVER		
CHECKED BY: D. HARDEN		
SCALE: NONE		
DATE: 2/2/26		

CONSTRUCTION WATER DETAIL

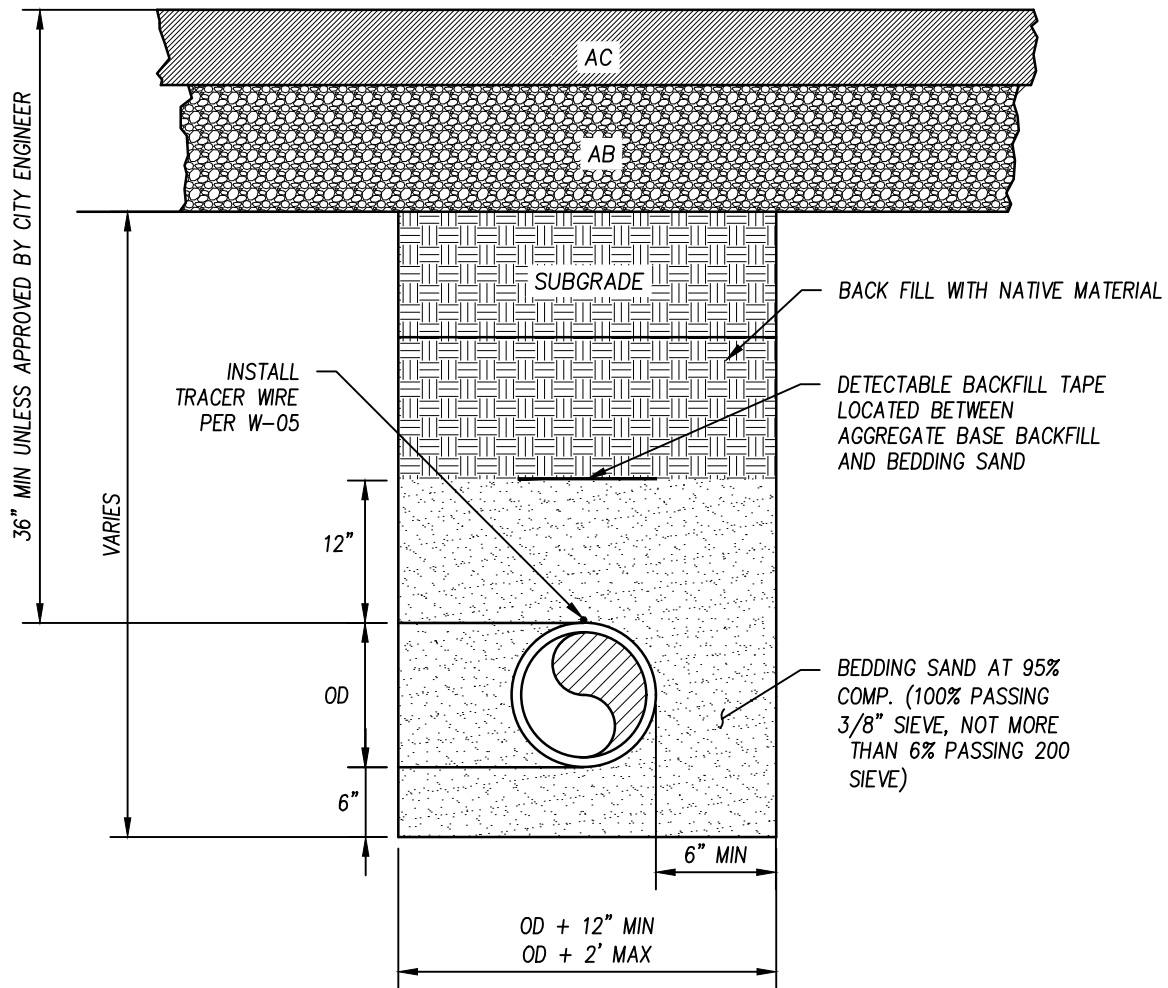
CITY OF GRIDLEY
DEPARTMENT OF PUBLIC WORKS

APPROVED BY:
DAVID HARDEN

David Harden
CITY ENGINEER
RCE 84216

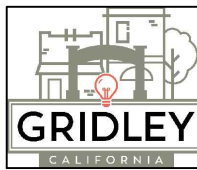



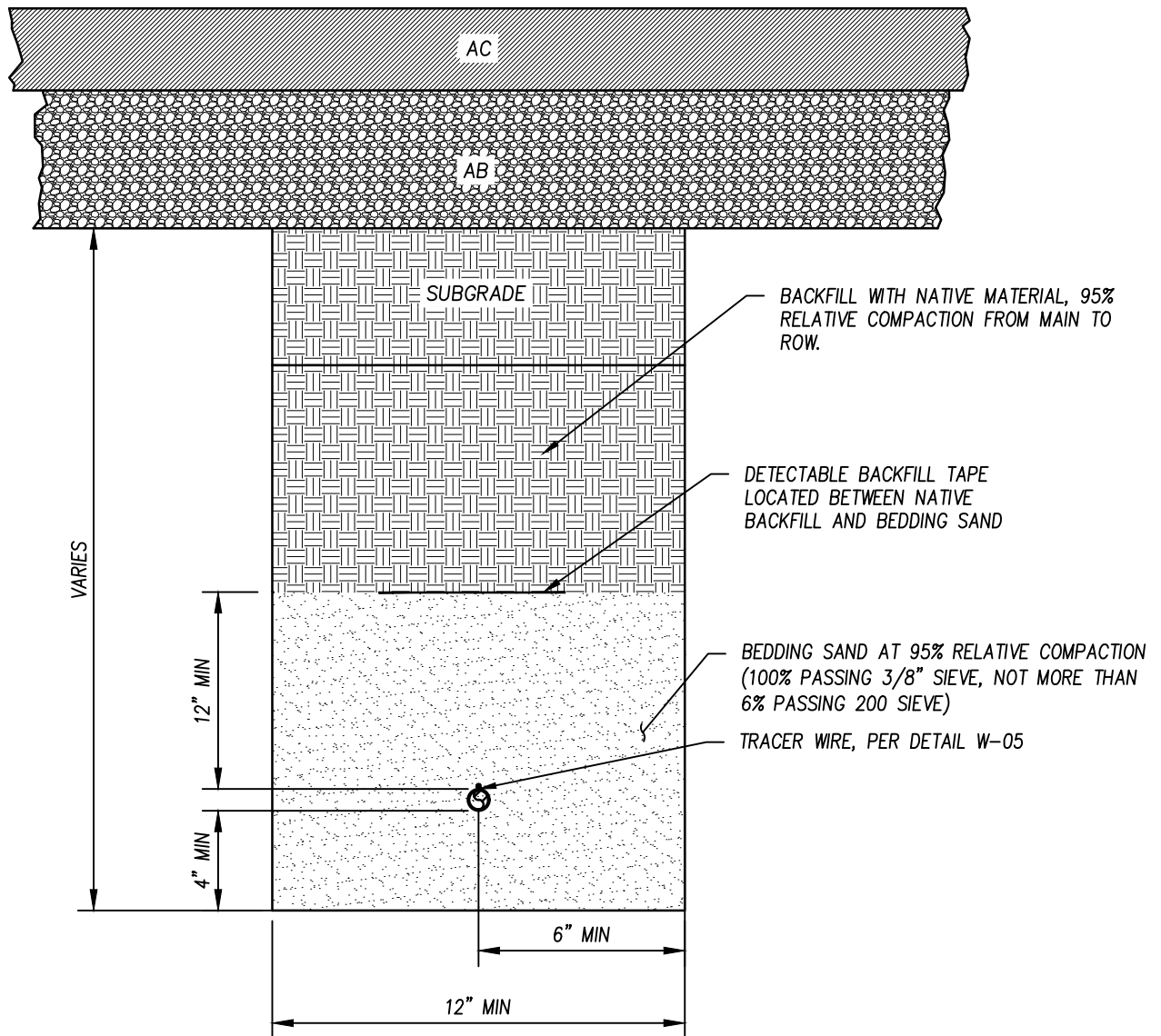
W-14



NOTES:



1. REFER TO DETAIL ST-20 AND ST-21 FOR BACKFILL REQUIREMENTS ABOVE THE PIPE ZONE.
2. BACKFILL SHALL BE MECHANICALLY CONSOLIDATED OR SHOVEL SLICED UNDER THE HAUNCHES OF THE PIPE.
3. IN ROCKY OR UNYIELDING SOIL, THE TRENCH SHALL BE EXCAVATED A MINIMUM OF 12" BELOW THE PIPE AND THE TRENCH WIDTH SHALL BE INCREASED BY 12".
4. ONE 12" WIDE STRIP OF BACKFILL TAPE SHALL BE USED FOR EVERY 12" PIPE DIAMETER OR FRACTION THERE OF. BACKFILL TAPE SHALL BE BLUE, MARKED "WATER MAIN BURIED BELOW" AND APPROVED FOR EXTENDED UNDERGROUND USE.

NO.	REVISION DATE	BY	WATER MAIN TRENCH AND BACKFILL	APPROVED BY: DAVID HARDEN	
DRAWN BY: J. GINNEVER				 CITY ENGINEER RCE 84216	
CHECKED BY: D. HARDEN			CITY OF GRIDLEY DEPARTMENT OF PUBLIC WORKS	W-15	
SCALE: NONE					
DATE: 2/2/26					



NOTES:

1. BACKFILL SHALL BE MECHANICALLY CONSOLIDATED OR SHOVEL SLICED UNDER THE HAUNCHES OF THE PIPE.
2. IN ROCKY OR UNYIELDING SOIL, THE TRENCH SHALL BE EXCAVATED A MINIMUM OF 12" BELOW THE PIPE AND THE TRENCH WIDTH SHALL BE INCREASED BY 12".
3. ONE 3" WIDE STRIP OF BACKFILL TAPE SHALL BE USED FOR EVERY 6" PIPE DIAMETER OR FRACTION THERE OF. BACKFILL TAPE SHALL BE BLUE, MARKED "WATER LINE/PIPE BURIED BELOW" AND APPROVED FOR EXTENDED UNDERGROUND USE.
4. THERE MUST BE A MINIMUM OF 30" COVER FROM THE TOP OF THE PIPE TO THE FINISHED GRADE.

NO.	REVISION DATE	BY	TRENCH AND BACKFILL FOR WATER SERVICE LINES	APPROVED BY: DAVID HARDEN  CITY ENGINEER RCE 84216		
DRAWN BY: J. GINNEVER			CITY OF GRIDLEY DEPARTMENT OF PUBLIC WORKS	W-16		
CHECKED BY: D. HARDEN						
SCALE: NONE						
DATE: 2/2/26						