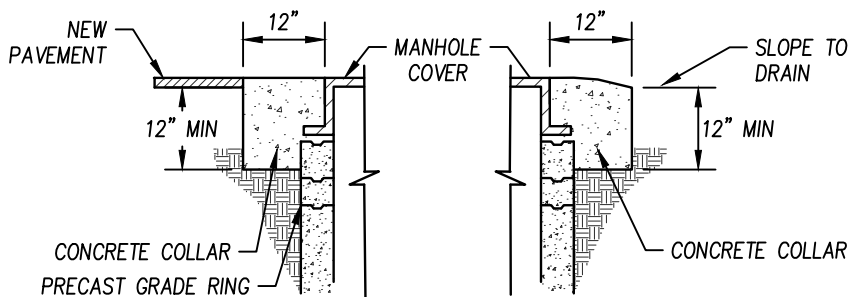
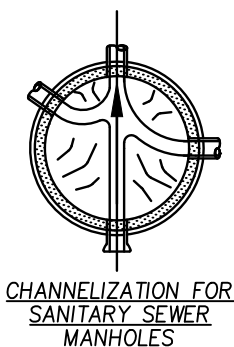
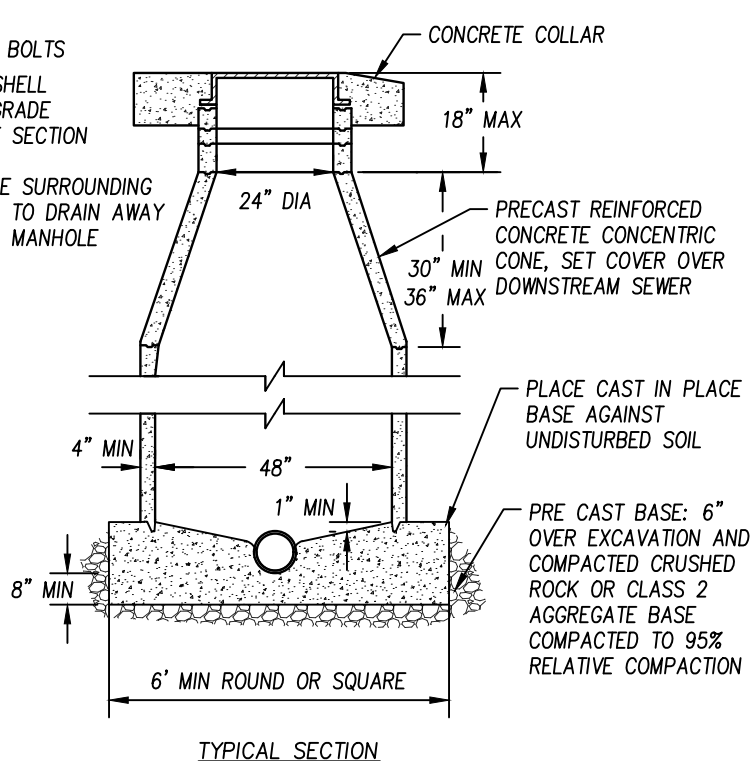


#### MANHOLE FRAMES AND COVERS:

ALL MANHOLE FRAMES AND COVERS SHALL BE OF CAST IRON OR DUCTILE IRON AND CONFORM TO ASTM DESIGNATION A48, C478 OR ASTM A536 FOR DUCTILE IRON OR, CLASS 30 AND SHALL BE THE FOLLOWING OR APPROVED EQUAL FOR THE INDICATED SIZE AND APPLICATION:

1. 24" FRAME AND COVER: D & L SUPPLY # A-1021 (STANDARD 6 5/8" HIGH) OR SOUTH BAY FOUNDRY # 1900; "S" SHALL BE EMBOSSED IN CENTER OR MARKED "SANITARY SEWER."
2. SHORT 24" FRAMES AND COVERS: D & L SUPPLY # A-1022 (5") AND # A-1023 (3"); SOUTH BAY FOUNDRY # 1922 (5") AND # 1923 (3").

NOTE: COVER FOR ALL 24" FRAMES ARE INTERCHANGEABLE.



#### NOTES:

1. FORM SMOOTH AND UNIFORM CHANNELS IN INVERT TO MEET ENDS OF PIPES. FINISH TO BE EQUIVALENT TO STEEL TROWEL FINISH.
2. END PIPE 2" FROM INSIDE WALL, TYPICAL FOR JUNCTION AND ANGLE MANHOLES.
3. JOINT IN PIPE REQUIRED WITHIN 2' OF MANHOLE
4. UNUSED CHANNELS SHALL BE COMPLETELY FILLED WITH GROUT.
5. CONCRETE FOR MANHOLE CONSTRUCTION SHALL CONFORM TO "MINOR CONCRETE" SECTION OF CALTRANS SPECIFICATIONS. PRIME ALL JOINTS AND SET IN DOUBLE BEAD OF KENT SEAL JOINT SEALING COMPOUND OR APPROVED EQUAL.
6. USE CIRCULAR METAL FORM TO SHAPE FULL DEPTH GROOVE IN BASE TO MATCH TONGUE ON RISER SECTION.
7. MAXIMUM DEPTH OF COVER AND GRADE RINGS SHALL BE 18" AND MINIMUM DEPTH OF COVER SHALL BE COVER PLUS A 3" GRADE RING.
8. FLOW LINES SHALL HAVE 1/10' DROP OR AS INDICATED ON PLANS.
9. MANHOLES WITH DROPS SHALL BE EPOXY COATED.
10. SET CAST IRON FRAME IN CONCRETE COLLAR.
11. A 5 FOOT STUB OUT IS REQUIRED AT DEAD END MANHOLES WITH POTENTIAL FOR FUTURE DEVELOPMENT. WHEN A 5' STUBOUT IS PROVIDED DISREGARD NOTE 3.

NO.	REVISION DATE	BY
DRAWN BY: J. GINNEVER		
CHECKED BY: D. HARDEN		
SCALE: NONE		
DATE: 2/2/26		

## SANITARY SEWER MANHOLE

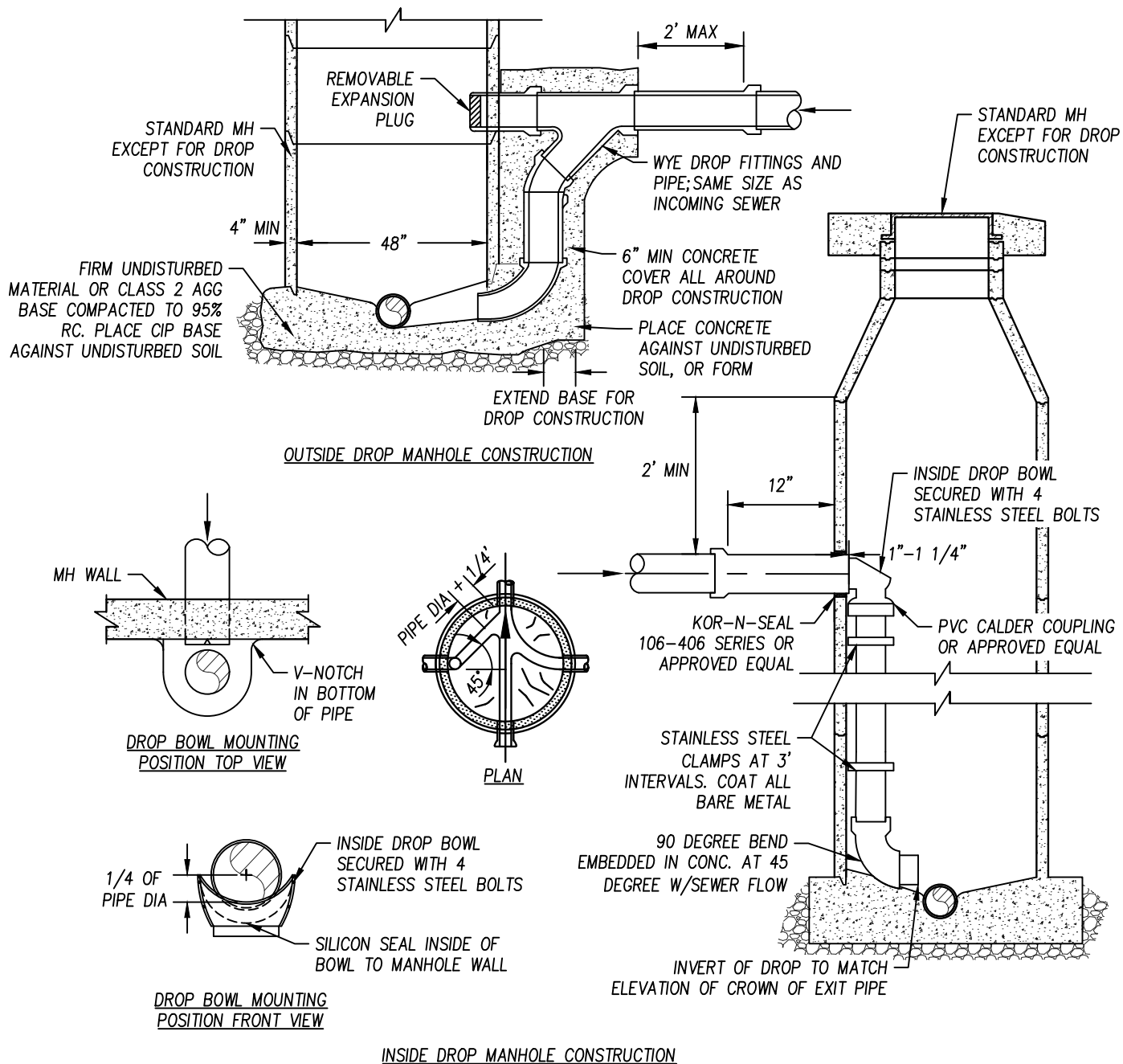
CITY OF GRIDLEY  
DEPARTMENT OF PUBLIC WORKS

APPROVED BY:  
DAVID HARDEN

*D. Harden*  
CITY ENGINEER  
RCE 84216





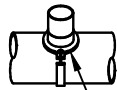
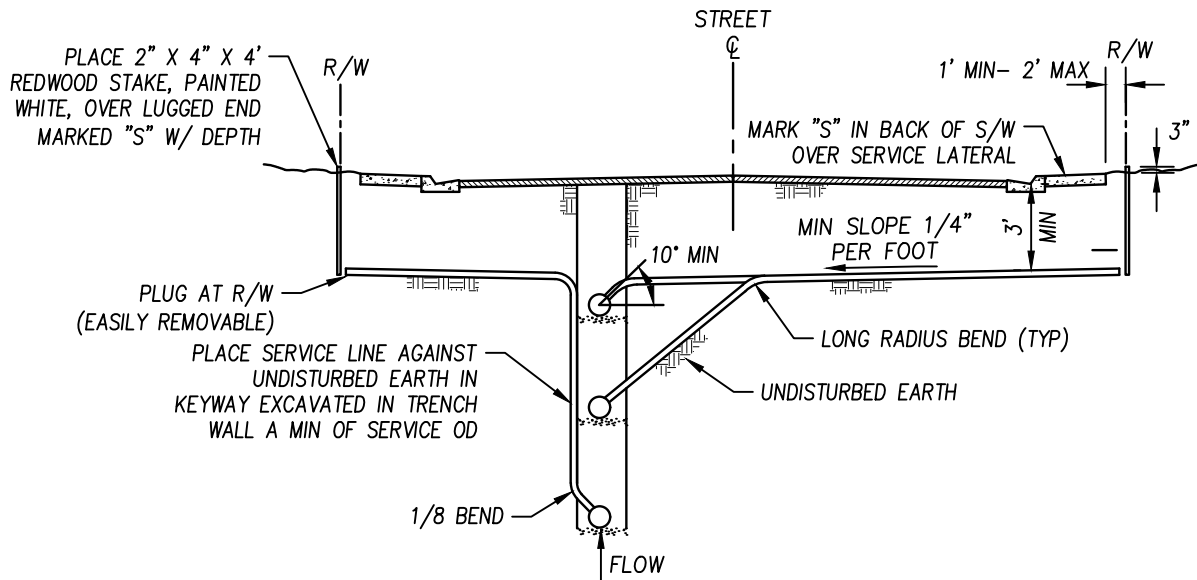
SS-01



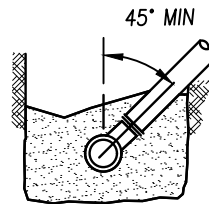
# **NOTES:**

1. OUTSIDE AND INSIDE DROP INLETS ONLY TO BE USED UPON APPROVAL FROM THE CITY ENGINEER
2. INSIDE DROP PIPING SHALL BE PVC PIPE, SCH 40 AND SHALL USE DROP BOWL PRODUCED BY RELINER DURAN, INC. OR APPROVED EQUAL. ALL DROP CONNECTION PIPE AND FITTING TO BE SAME SIZE AS ENTERING PIPE.
3. PRIME AND CEMENT ALL JOINTS AS RECOMMENDED BY THE MANUFACTURER.
4. ATTACH DROP BOWL AND EACH CLAMPING BRACKET TO THE MANHOLE WALL WITH STAINLESS STEEL 3/8" X 1/4" RAMSET/RED HEAD BOLTS. PRE-ROTO DRILL AND SET BOLTS IN PLACE WITH EPOXY PASTE. EPOXY PASTE SHALL BE A TWO COMPONENT 100% SOLID SYSTEM. EPOXY SHALL BE SKIADUR 31 HI-MOD GEL BY SIKA CORPORATION OR APPROVED EQUAL.
5. DROP BOWL MODEL "A-4" SHALL BE USED FOR ALL LINES UP THROUGH FULL 6" INLETS. DROP BOWL MODEL "A-6" SHALL BE USED FOR ALL 8" INLETS. DROP BOWLS "B-8" SHALL BE USED FOR ALL 10" INLETS. DROP BOWL MODEL "B-10" SHALL BE USED FOR ALL 12" INLETS.

NO.	REVISION DATE	BY	DROP MANHOLES	APPROVED BY: DAVID HARDEN	
DRAWN BY: J. GINNEVER				 CITY ENGINEER RCE 84216	
CHECKED BY: D. HARDEN			CITY OF GRIDLEY DEPARTMENT OF PUBLIC WORKS	SS-02	
SCALE: NONE					
DATE: 2/2/26					



TAPPING SADDLE (CONNECTED TO PIPE W/STAINLESS STEEL STRAP) SEALTITE OR CITY APPROVED EQUAL. ALL NEW CONSTRUCTION SHALL USE MANUFACTURED WYES.



CONNECTION DETAILS

#### NOTES:

1. ALL SERVICE LINES SHALL BE 4" FOR RESIDENTIAL AND 6" FOR COMMERCIAL UNLESS OTHERWISE NOTED.
2. SEWER SERVICES SHALL HAVE SAME BEDDING AND BACKFILL AS SEWER MAINS.
3. CONTRACTOR SHALL USE THE MOST APPROPRIATE TYPE CONNECTION FOR THE PARTICULAR SITUATION ENCOUNTERED.
4. SERVICE SEWER SHALL HAVE A MINIMUM 3' COVER MEASURED FROM FINISHED GRADE AT PROPERTY LINE WHENEVER LATERAL DEPTH AND SERVICE SEWER SLOPE (MIN 1/4" PER FOOT) PERMIT. UNLESS OTHERWISE NOTED OR AS APPROVED BY ENGINEER.
5. WHEN THE LATERAL SEWER DEPTH IS SUCH THAT MINIMUM COVER AT PROPERTY LINE CANNOT BE MET, THE MINIMUM SLOPE OF 1/4" PER FOOT SHALL GOVERN THE COVER.
6. MITER FITTING SHALL BE MAX 45°.
7. MINIMUM DEPTH OF COVER SHALL BE INCREASED TO 4'-6" WHERE A WATER MAIN IS TO BE INSTALLED AT BACK OF SIDEWALK AS A PART OF THE SUBDIVISION IMPROVEMENTS. IN SUCH CASES, THEIR SERVICE SHALL BE EXTENDED TO A MINIMUM OF 7' BACK OF THE SIDEWALK; CLEANOUT TO GRADE SHALL REMAIN WITHIN 3' OF BACK OF SIDEWALK.
8. SEWER SERVICES ORIGINATING FROM THE SEWER MAINS 14 FT AND GREATER IN DEPTH SHALL HAVE THE CROTCH OF THE SDR-35 "WYE" FITTING FILLED WITH CONCRETE.
9. ANY REPAIRS DONE TO SERVICES OR MAINS SHALL HAVE COMPRESSION COUPLINGS WITH STAINLESS STEEL SHEAR RINGS.
10. FOR NEW CONSTRUCTION, MANUFACTURED WYES SHALL BE INSTALLED.
11. CUSTOMERS OWN AND ARE RESPONSIBLE FOR MAINTAINING THE LATERAL FROM THE SEWER MAIN TO THE BUILDING IT SERVICES.

NO.	REVISION DATE	BY

## SANITARY SEWER SERVICE & CONNECTION

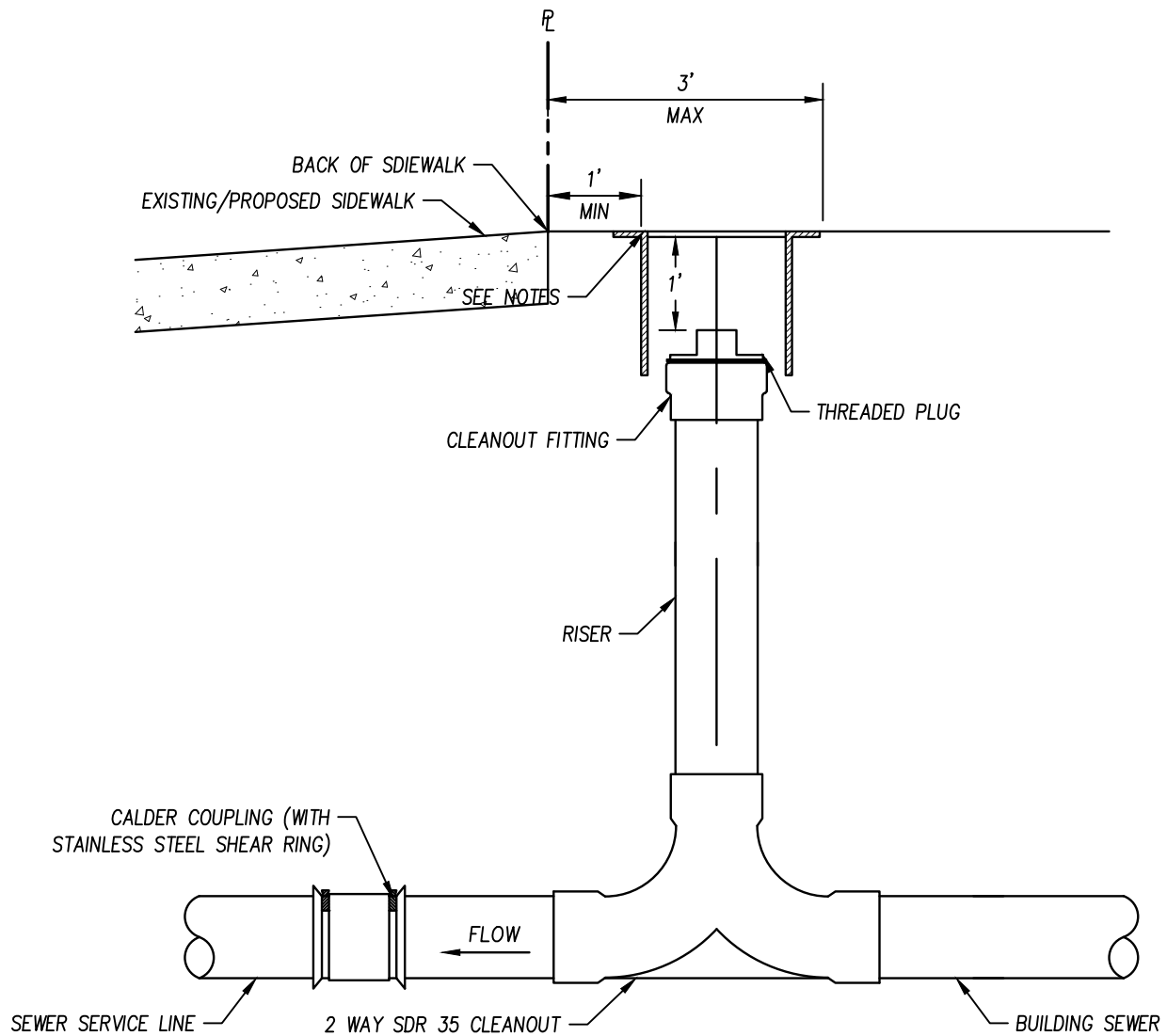
CITY OF GRIDLEY  
DEPARTMENT OF PUBLIC WORKS

APPROVED BY:  
DAVID HARDEN

*D. Harden*  
CITY ENGINEER  
RCE 84216





SS-03



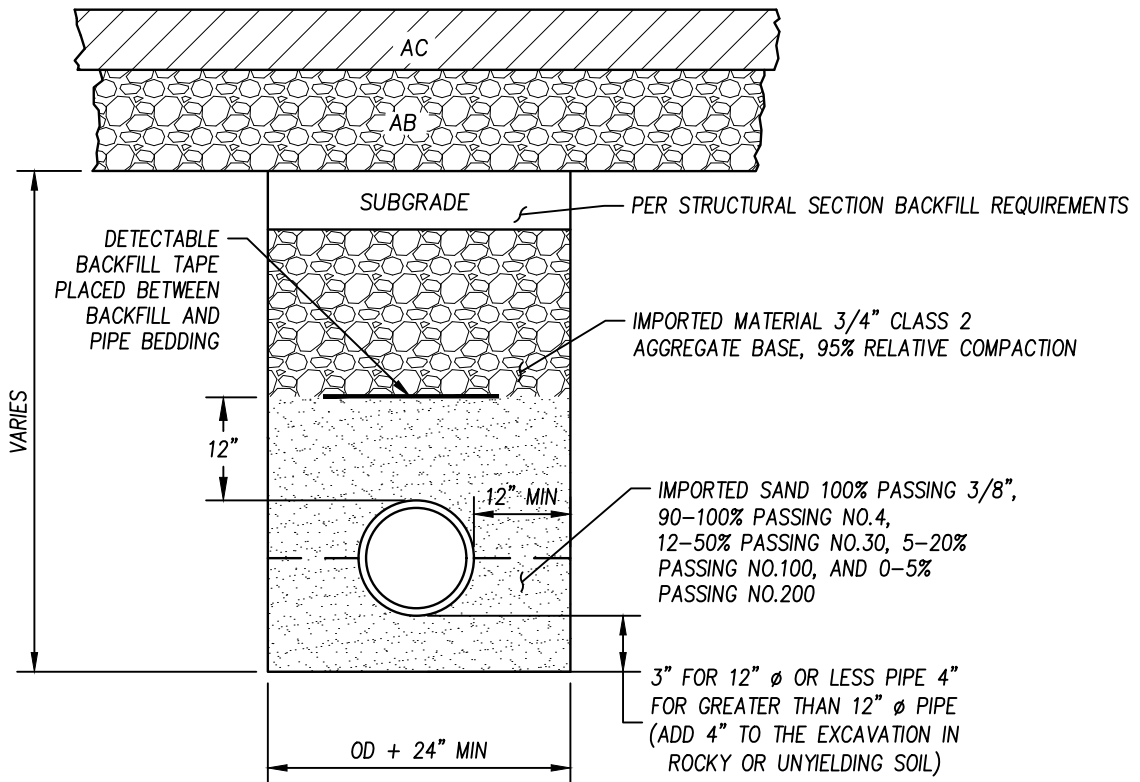
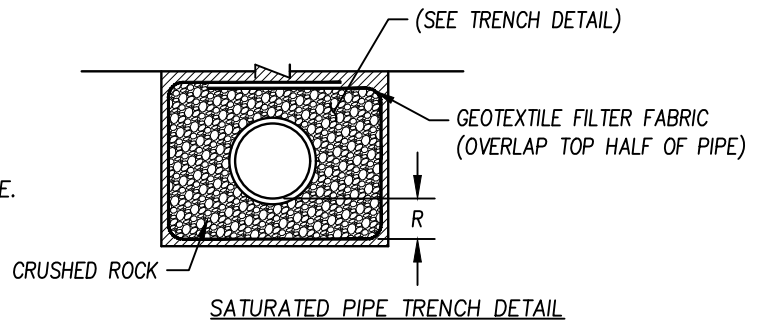
**NOTES:**

1. WHEN INSTALLED IN DRIVEWAY USE BROOKS 3RT SERIES VALVE BOX, MARKED "SEWER" OR APPROVED EQUAL.
2. WHEN INSTALLED IN LAWN OR PLANTER USE BROOKS 1-SP SERIES VALVE BOX MARKED "SEWER" OR APPROVED EQUAL.
3. IF PROPERTY LINE IS NOT LOCATED AT BACK OF WALK, THE CLEANOUT SHALL BE A MAXIMUM OF 3' FROM THE PROPERTY LINE.

NO.	REVISION DATE	BY	SANITARY SEWER LATERAL CLEANOUT	APPROVED BY: DAVID HARDEN	
DRAWN BY: J. GINNEVER					
CHECKED BY: D. HARDEN			CITY OF GRIDLEY DEPARTMENT OF PUBLIC WORKS	CITY ENGINEER RCE 84216	
SCALE: NONE					
DATE: 2/2/26					



TRENCH BACKFILL REQUIREMENTS:

1. REFER TO DETAILS ST-32 AND ST-33 FOR BACKFILL REQUIREMENTS ABOVE THE PIPE ZONE.



NOTES:

1. BACKFILL SHALL BE MECHANICALLY CONSOLIDATED OR SHOVEL SLICED UNDER THE HAUNCHES OF THE PIPE.
2. SATURATED PIPE TRENCH DETAIL SHALL BE USED WHEN REQUIRED BY CITY ENGINEER.
3. ONE 12" WIDE STRIP OF BACKFILL TAPE SHALL BE USED FOR EVERY 12" PIPE DIAMETER OR FRACTION THERE OF. BACKFILL TAPE SHALL BE GREEN MARKED "SEWER MAIN BURIED BELOW" AND BE APPROVED FOR EXTENDED UNDERGROUND USE.
4. THERE MUST BE A MINIMUM OF 36" COVER FROM THE TOP OF THE PIPE TO THE FINISHED GRADE.

NO.	REVISION DATE	BY	<b>SEWER MAIN TRENCH AND BACKFILL</b>	APPROVED BY: DAVID HARDEN	
				 CITY ENGINEER RCE 84216	
DRAWN BY: J. GINNEVER					
CHECKED BY: D. HARDEN					
SCALE: NONE			CITY OF GRIDLEY DEPARTMENT OF PUBLIC WORKS	SS-05	
DATE: 2/2/26					