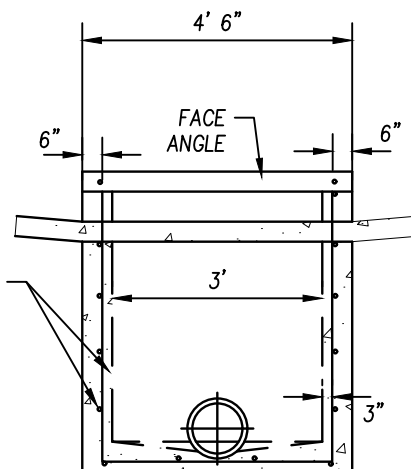
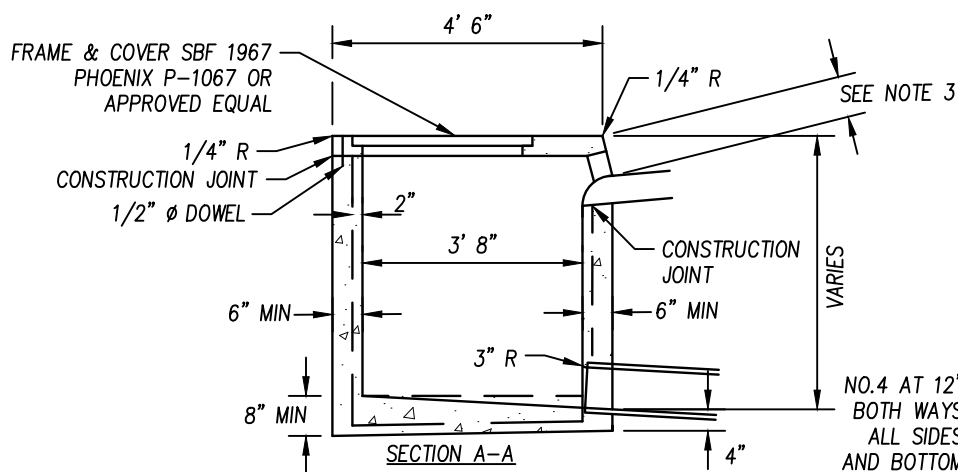
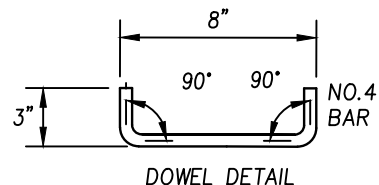
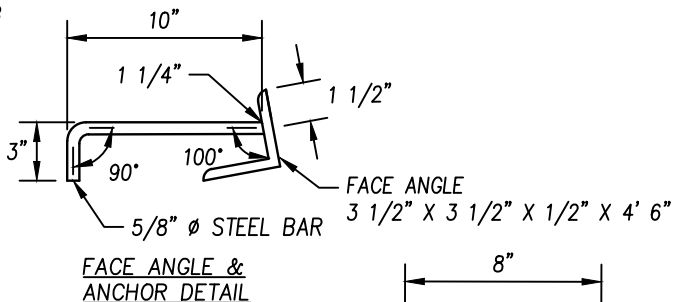
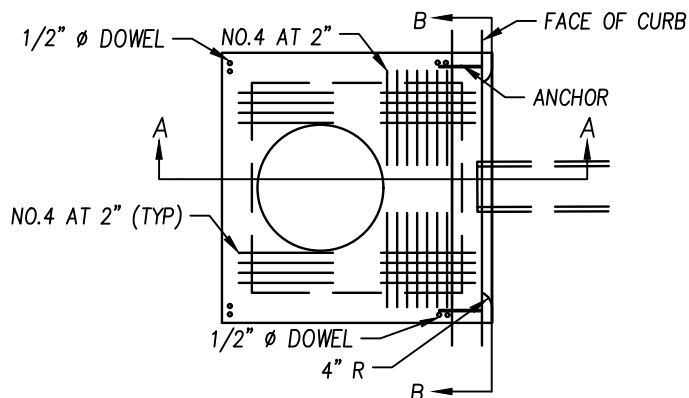


DR-01



#### NOTES:

1. CONNECTION PIPES AND OUTLET PIPES MAY BE PLACED IN ANY POSITION AROUND THE WALLS.
2. CURVATURE OF THE LIP AND SIDE WALLS AT GUTTER OPENING SHALL BE FORMED BY CURVED FORMS.
3. CURB FACE HEIGHT (CH) OF DROP INLET SHALL BE THAT OF THE EXISTING CURB PLUS 1 1/4".
4. INSTALL 3' LONG TRANSITION SECTION EACH SIDE OF INLET TO DEPRESS THE GUTTER FLOWLINE 1 1/4" AT THE INLET.
5. MINIMUM CLEAR SPACING BETWEEN FACE OF CONCRETE AND REINFORCING STEEL TO BE 1 1/2". MAXIMUM DEPTH "D" SHALL BE 8".
6. FACE ANGLE SHALL BE GALVANIZED AFTER FABRICATION ALL SURFACES SHALL BE FREE OF RUST AND OIL AND NEATLY SOLDERED
7. WHEN PRECAST CONCRETE BOXES ARE FURNISHED THE WALL THICKNESS MAY BE 4" WITH REINFORCEMENT AND THE FACE ANGLE MAY 3/8" STOCK.
8. CONCRETE SHALL BE "MINOR CONCRETE" AS DEFINED IN CALTRANS STANDARD SPECIFICATIONS.

SECTION B-B

STEEL LIST FOR TOP	
DESCRIPTION	REQ'D
NO.4 BAR 4' 4"	7
NO.4 BAR 3' 11"	8
NO.4 BAR 1' 7"	3
FACE ANGLE 4' 6"	1
DOWELS	4
FRAME & COVER	1

NO.	REVISION DATE	BY
DRAWN BY: J. GINNEVER		
CHECKED BY: D. HARDEN		
SCALE: NONE		
DATE: 2/2/26		

## TYPE 2 DROP INLET

CITY OF GRIDLEY  
DEPARTMENT OF PUBLIC WORKS

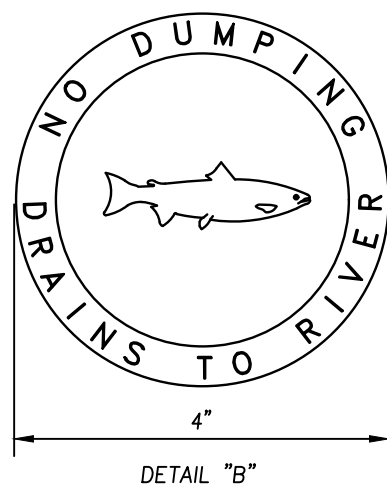
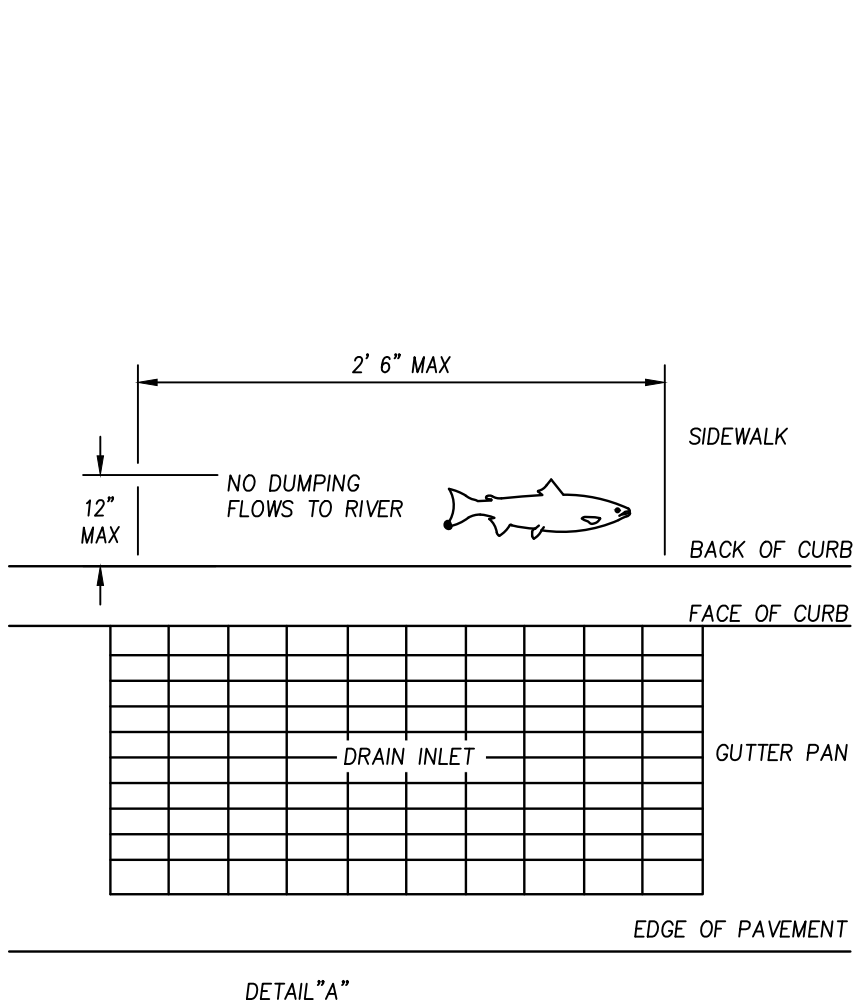
APPROVED BY:  
DAVID HARDEN

*David Harden*  
CITY ENGINEER  
RCE 84216





DR-02

DR-03



**NOTES:**

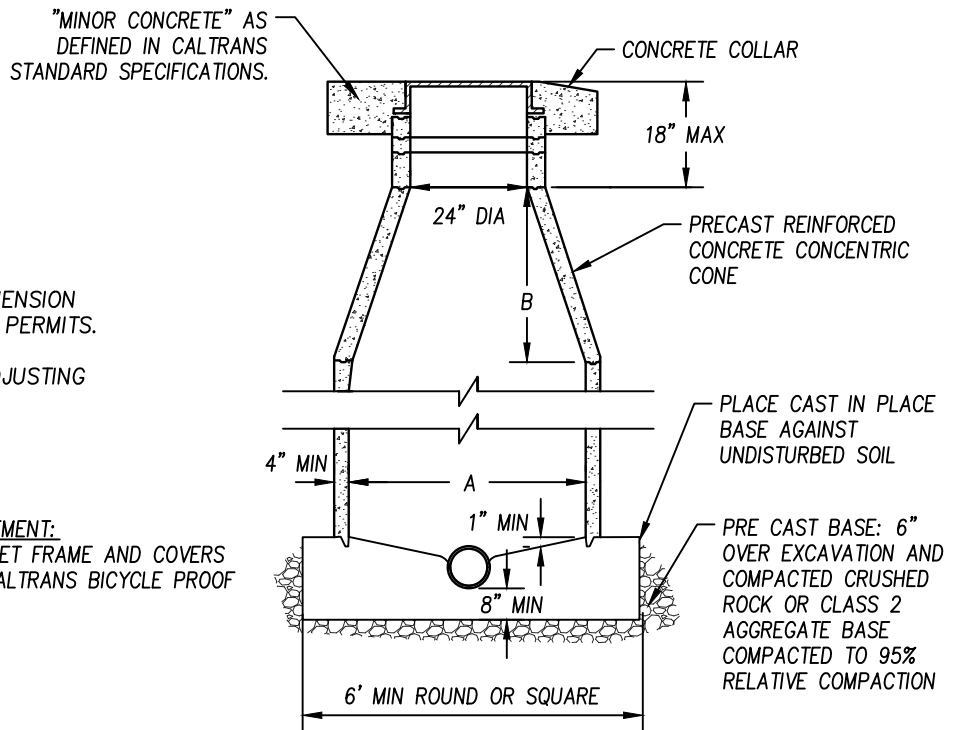
1. "DETAIL A" LETTERING SHALL BE 1 1/4" TO 1 1/2" HIGH. THE MESSAGE AND SYMBOL SHALL BE DEPRESSED 1/8" TO 1/4" INTO THE CONCRETE. THE FISH SYMBOL SHALL BE A MINIMUM 1/8" TO 1/4" INTO THE CONCRETE. THE FISH SYMBOL SHALL BE A MINIMUM OF 11" AND 3 1/2" HIGH.
2. "DETAIL A" SHALL BE PRE-APPROVED BY THE CITY ENGINEER PRIOR TO ITS USE.
3. "DETAIL A" SHALL APPLY TO ALL DRAIN INLET DESIGNS. WHERE THE SIDEWALK DOES NOT ADJOIN THE BACK OF CURB, THE NOTICE SHALL BE STAMPED IN THE CONCRETE BACKUP, BEHIND THE DRAIN INLET. WHERE THE DRAIN INLET IS PLACED IN A "V" GUTTER WITHOUT A CURB INLET, THE NOTICE SHALL BE STAMPED ON ONE SIDE OR THE OTHER, PARALLEL TO THE LENGTH OF THE INLET.
4. "DETAIL B" MAY BE PLACED WHERE "DETAIL A" DOES NOT WARRANT INSTALLATION AT THE DISCRETION OF THE PUBLIC WORKS CONSTRUCTION INSPECTOR. THE MESSAGE SHALL BE FREE OF BLEMISHES, LEGIBLE AND ACCEPTABLE TO THE CITY ENGINEER.
5. "NO DUMPING" PUBLIC NOTICES ARE REQUIRED AT ALL STORM DRAIN INLETS WITHIN THE CITY LIMITS, PUBLIC AND PRIVATE STORM DRAIN IMPROVEMENTS. "DETAIL B" SHALL BE ALMETEK INDUSTRIES MARKER, "ENVIROMARK", STAINLESS MATTE FINISH SD-SP, ITEM NUMBER SD-4, BLUE "NO DUMPING DRAINS TO RIVER" WITH INSTALLATION METHODS 3, 4, 6, 8, OR 9, OR APPROVED EQUAL MAY BE INSTALLED PER MANUFACTURERS' RECOMMENDATIONS.

NO.	REVISION DATE	BY	<b>NO DUMPING PUBLIC NOTICE</b>	APPROVED BY: DAVID HARDEN  CITY ENGINEER RCE 84216	
				<b>CITY OF GRIDLEY</b> DEPARTMENT OF PUBLIC WORKS	<b>DR-04</b>
DRAWN BY: J. GINNEVER					
CHECKED BY: D. HARDEN					
SCALE: NONE					
DATE: 2/2/26					

A	B
48"	18"
60"	30"
72"	42"
84"	54"

RISER SECTIONS. CONES, AND ADJUSTING RINGS SHALL CONFORM TO ASTM DESIGNATION C-478.

1. REPLACEMENT OF EXISTING DRAIN INLET FRAME AND COVERS SHALL MEET REQUIREMENT OF THE CALTRANS BICYCLE PROOF GRATE DETAILS.



1. 24" FRAME AND SLOTTED COVER: D & L SUPPLY # A-1021 (STANDARD 6 5/8" HIGH) OR SOUTH BAY FOUNDRY # D1920; "D" SHALL BE EMBOSSED IN CENTER.
2. 36" FRAME AND COVER: D & L SUPPLY # A-1462 OR SOUTH BAY FOUNDRY #D1907; "D" SHALL BE EMBOSSED IN CENTER.
3. 24" FRAME AND SLOTTED COVER: D & L SUPPLY # C-2660 (# A-1021 WITH SLOTTED COVER), OR SOUTH BAY FOUNDRY # 1920 (SPECIFY SLOTTED COVER).
4. SHORT 24" FRAMES AND COVERS: D & L SUPPLY # A-1022 (5") AND # A-1023 (3"); SOUTH BAY FOUNDRY # 1922 (5") AND # 1923 (3").
5. REXUS MANHOLE COVER: SANT-GOBAIN PAM, CDRU60EHDRA, 24" ROUND LIGHTWEIGHT HINGED, DUCTILE IRON MANHOLE COVER.
6. CRISP BOXED SURVEY MONUMENT WITH PLASTIC FORM WITHOUT COMPANY NAME IS AN APPROVED ALTERNATE PER DETAIL ST-27.
7. D&L SUPPLY #C-2660 (6 5/8" HIGH STANDARD CASTING)
8. D&L SUPPLY #C-2661 (5")

1. JOINT MAY BE EITHER KEED OR TONGUE AND GROOVE.
2. TOP OF FRAME SHALL BE 1/8" BELOW ADJACENT PAVEMENT.
3. A 0.1' MINIMUM FALL THROUGH MANHOLE.
4. OD OF PIPE SHALL NOT EXCEED ID OF ITS MANHOLE BARREL.
5. JOINTS SHALL BE MADE WITH EITHER NON-SHRINKING MORTAR OR WITH A PLASTIC SEALING COMPOUND CONFORMING TO FEDERAL SPECIFICATIONS FOR PRESERVATIVE AND SEALING COMPOUNDS.
6. FLAT TOP SLAB SHALL BE USED WHEN SHALLOW PIPE DOES NOT PERMIT USE OF A TAPERED DOME. FLAT TOP MANHOLE SHALL BE APPROVED BY CITY ENGINEER.
7. CITY OF GRIDLEY WILL ACCEPT PRE CAST MANHOLES THAT MEET THE MOST RECENT CALTRANS SPECIFICATIONS.
8. END PIPE 2" FROM INSIDE WALL
9. A 5 FT STUB OUT IS REQUIRED AT DEAD END MANHOLES WITH POTENTIAL FOR FUTURE DEVELOPMENT. WHEN A 5FT STUBOUT IS PROVIDED DISREGARD NOTE 2.

NO.	REVISION DATE	BY
DRAWN BY: J. GINNEVER		
CHECKED BY: D. HARDEN		
SCALE: NONE		
DATE: 2/2/26		

# STANDARD PRECAST MANHOLE

**CITY OF GRIDLEY**  
DEPARTMENT OF PUBLIC WORKS

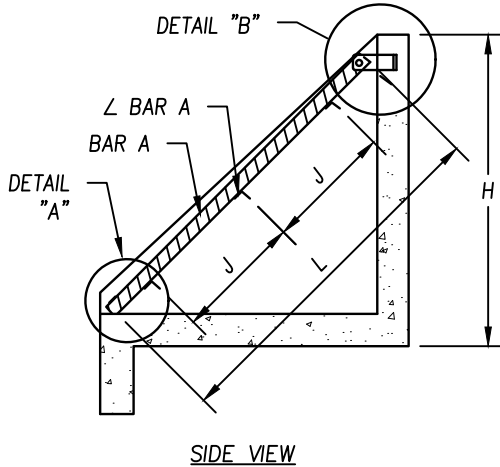
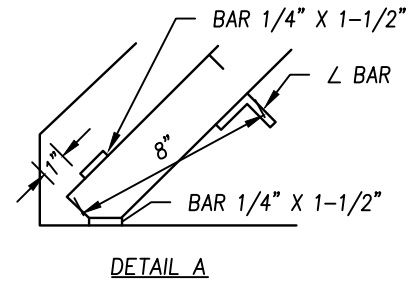
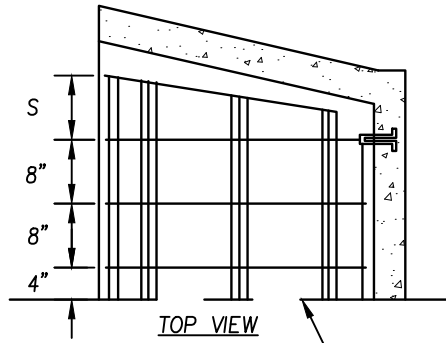
APPROVED BY:  
DAVID HARDEN

CITY ENGINEER  
RCE 84216

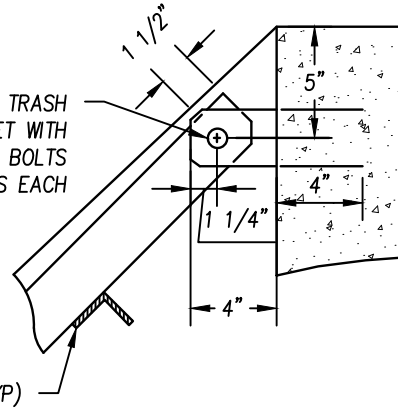


DR-05

DR-06



DRILL 13/16, CONNECT TRASH RACK TO BRACKET WITH 3/4" BY 2-3/4 HEX BOLTS WITH TWO HEX NUTS EACH



ALL WELDS (TYP)

TRASH RACK DIMENSIONS

DIA	NUMBER & SIZE		L	J	S	H
	BAR A	L BAR				
33"	8-3/8 X 2 1/2	3-2 X 2 X 1/4	5'-1"	1'-10"	8"	3"-8"
36"	"	"	5'-4"	1'-11"	8"	3"-10"
42"	9-3/8 X 2 1/2	"	5'-11"	2'-3"	9"	4"-4"
48"	"	4-2 X 2 X 1/4	6'-7"	1'-9"	10"	4"-10"
54"	10-3/8 X 3	4-3 X 3 X 1/4	7'-9"	2'-1 1/2"	10 1/2"	5"-8"
60"	11-3/8 X 3 1/2	"	8'-5"	2'-4"	11"	6"-2"

NOTES:

1. THIS TRASH RACK MAY BE USED WITH PIPE INLET STRUCTURES.
2. MATERIAL TO CONFORM TO ASTM DESIGNATION A-36
3. 'S' MAY VARY WITH 'B'. SEE PLATE.
4. ALL FILLET WELDS TO BE 3/16"
5. TWO HINGES REQUIRED FOR 33", 36" & 42" PIPES. THREE HINGES REQUIRED FOR 48", 54" & 60" PIPES.

NO.	REVISION DATE	BY
DRAWN BY: J. GINNEVER		
CHECKED BY: D. HARDEN		
SCALE: NONE		
DATE: 2/2/26		

INLET TRASH RACK 33 IN.  
PIPE OR LARGER

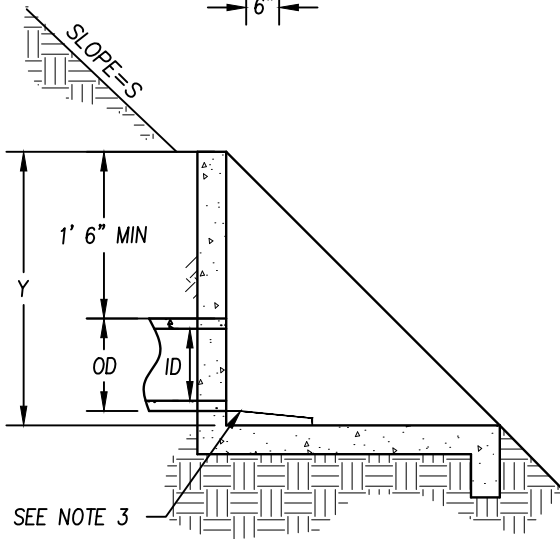
CITY OF GRIDLEY  
DEPARTMENT OF PUBLIC WORKS

APPROVED BY:  
DAVID HARDEN

*D. Harden*  
CITY ENGINEER  
RCE 84216

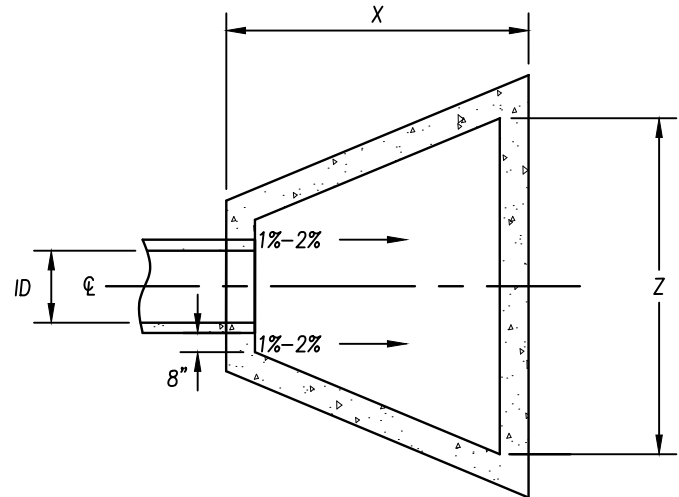
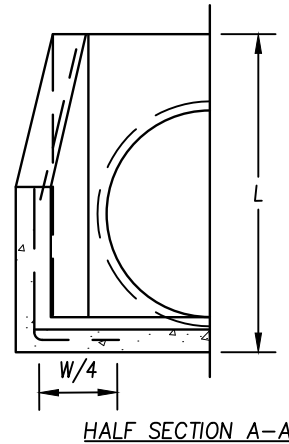


DR-07



### DIMENSIONS & REINFORCING

ID	W	B	L	T	ALL REINFORCING
33"	3'-5"	5'-3"	4'-0"	6"	NO.5 @12"
36"	3'-8"	5'-8"	4'-2"	6"	NO.5 @12"
42"	4'-4"	6'-4"	4'-8"	6"	NO.5 @12"
48"	4'-10"	7'-2"	5'-2"	8"	NO.6 @12"
54"	5'-4"	8'-0"	6'-0"	8"	NO.6 @12"
60"	6'-0"	8'-10"	6'-6"	8"	NO.6 @12"



NOTES:

1. "B" MAY BE REDUCED IF REQUIRED BY CHANNEL DIMENSIONS
2. REINFORCING BAR SPACING SHOWN IS MAXIMUM SPACING.
3. ALL CONCRETE TO BE "MINOR CONCRETE" AS DEFINED IN CALTRANS STANDARD SPECIFICATIONS.
4. SEE DR-06 FOR TRASH RACK DETAIL.
5. HEADWALL DESIGN MUST MEET THE FOLLOWING CRITERIA:
  - A.  $X = S \cdot Y$  AND  $X \geq ID + 6(FT)$
  - B.  $Z = 4 \cdot ID + 2/3 \cdot ID$
6. ALL CONCRETE SHALL BE MINIMUM 8" THICK
7. DESIGN ENGINEER SHALL PROVIDE A REBAR SCHEDULE FOR HEADWALLS LESS THAN 4' IN HEIGHT
8. STRUCTURAL CALCULATIONS SHALL BE SUBMITTED FOR HEADWALLS 4' OR GREATER IN HEIGHT

NO.	REVISION DATE	BY
DRAWN BY: J. GINNEVER		
CHECKED BY: D. HARDEN		
SCALE: NONE		
DATE: 2/2/26		

## PIPE INLET AND OUTLET STRUCTURES

**CITY OF GRIDLEY**  
DEPARTMENT OF PUBLIC WORKS

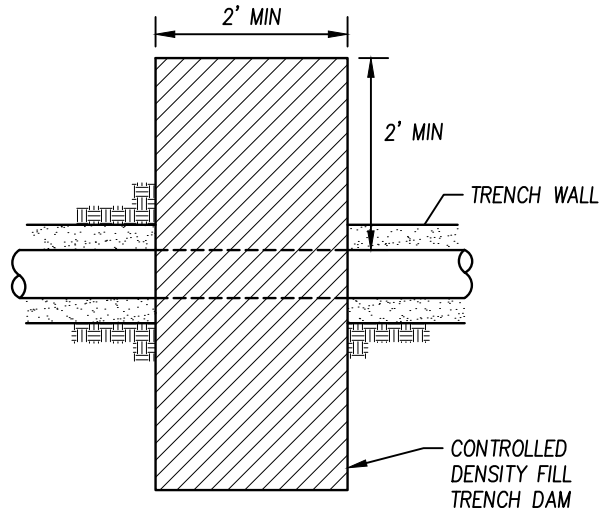
APPROVED BY:  
DAVID HARDEN

  
CITY ENGINEER  
RCE 84216



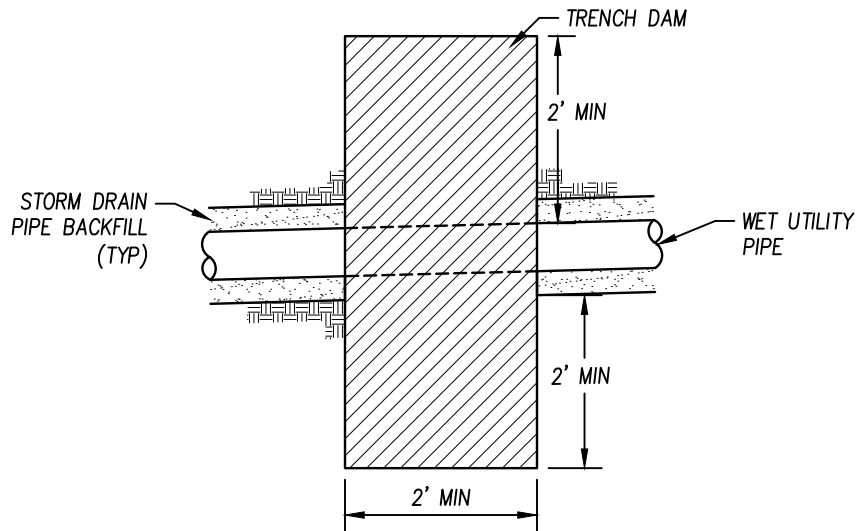
DR-08







PLAN VIEW

NOTE:  
TRENCH DAM SHALL BE CONSTRUCTED OF CONTROLLED DENSITY FILL.



PROFILE VIEW

NOTE:  
TRENCH DAMS MAY BE REQUIRED WHEN GROUNDWATER IS ENCOUNTERED.

NO.	REVISION DATE	BY	<h2 style="margin: 0;">TRENCH DAM</h2>	APPROVED BY: DAVID HARDEN	
				 CITY ENGINEER RCE 84216	
DRAWN BY: J. GINNEVER CHECKED BY: D. HARDEN SCALE: NONE DATE: 2/2/26					