

# **Gridley City Council – Special City Council Meeting Agenda**

Tuesday, June 27, 2023; 6:00 pm

Gridley City Hall, 685 Kentucky Street, Gridley, CA 95948

*“Our purpose is to continuously enhance our community’s vitality and overall quality of life. We are committed to providing high quality, cost-effective municipal services and forming productive partnerships with our residents and regional organizations. We collectively develop, share, and are guided by a clear vision, values, and meaningful objectives.”*

The Public is encouraged to attend and participate in person. Comments from the public on agenda items will be accepted until 4 pm on June 27<sup>th</sup>, 2023, via email to [csantana@gridley.ca.us](mailto:csantana@gridley.ca.us) or via the payment/document drop box at Gridley City Hall and will be conveyed to the Council for consideration.

You may attend via Zoom:

<https://us06web.zoom.us/j/87174103967?pwd=RDhhN1ZZclFZS0h1ZzBRMXRQQTFSdz09>

Passcode: 757326

Webinar ID: 871 7410 3967

Or Telephone:

+1 669 444 9171 US

+1 719 359 4580 US

**CALL TO ORDER – Mayor Farr**

**ROLL CALL**

**PLEDGE OF ALLEGIANCE – Councilmember Roberts**

**INVOCATION - None**

**PROCLAMATIONS - None**

**INTRODUCTION OF NEW OR PROMOTED EMPLOYEES – None**

**CONSENT AGENDA –**

1. Wildfire Mitigation Plan 2023

**ITEMS FOR COUNCIL CONSIDERATION**

2. Approval of FY 2023-2024 Operating Budget & Capital Improvement Plan and Resolutions
  - Resolution No. 2023-R-021 Establishing the 2023-2024 Appropriations Limit for the City of Gridley
  - Resolution 2023-R-022, A Resolution of the City of Gridley Adopting a Budget for Fiscal Year 2023-2024

3. Four Resolutions Authorizing the Levy of Assessment District Expenses for the Butte County 2023-2024 Tax Roll

- Resolution 2023-R-023: A Resolution of the City Council of the City of Gridley to Levy Assessment District No. 1 on Butte County 2023-2024 Tax Roll (Richins)
- Resolution 2023-R-024: A Resolution of the City Council of the City of Gridley to Levy Assessment District No. 6 on the Butte County 2023-2024 Tax Roll (Bowwood)
- Resolution 2023-R-025: A Resolution of the City Council of the City of Gridley to Levy Assessment District No.3 on Butte County 2023-2024 Tax Roll (Heron Landing)
- Resolution 2023-R-026: A Resolution of the City Council of the City of Gridley to Levy Assessment District No. 2 on the Butte County 2023-2024 Tax Roll (Eagle Meadows)

**COMMUNITY PARTICIPATION FORUM** - *Members of the public may address the City Council on matters not listed on the agenda. The City Council may not discuss nor take action on any community participation item brought forward by a member of the community. Comments are requested to be limited to three (3) minutes.*

**CITY STAFF AND COUNCIL COMMITTEE REPORTS** - *Brief updates from City staff and brief reports on conferences, seminars, and meetings attended by the Mayor and City Council members, if any.*

**POTENTIAL FUTURE CITY COUNCIL ITEMS** - (Appearing on the Agenda within 30-90 days):

Finance Policies	7/17/2023
Cost of Services Study Findings and Recommendations	7/17/2023
Budget Study Sessions	6/21-23/2023

**CLOSED SESSION – None**

**ADJOURNMENT** – adjourning to the next regular meeting on July 17<sup>th</sup>, 2023.

**NOTE 1: POSTING OF AGENDA-** This agenda was posted on the public bulletin board at City Hall at or before 6:00 p.m., June 26<sup>th</sup>, 2023. This agenda along with all attachments is available for public viewing online at [www.gridley.ca.us](http://www.gridley.ca.us) and at the Administration Counter in City Hall, 685 Kentucky Street, Gridley, CA.

**NOTE 2: REGARDING UNSCHEDULED MATTERS** – In accordance with state law, it shall be the policy of this Council that no action shall be taken on any item presented during the public forum or on unscheduled matters unless the Council, by majority vote, determines that an emergency situation exists, or, unless the Council by a two-thirds vote finds that the need to take action arose subsequent to the posting of this agenda.

## City Council Agenda Item #1

### Staff Report

**Date:** June 27, 2023  
**To:** Mayor and City Council  
**From:** Jake Carter, Utility Director  
**Subject:** Gridley Electric Utility Wildfire Mitigation Plan for FY 23-24

	Regular
<b>X</b>	Special
	Closed
	Emergency

---

#### Recommendation

Staff respectfully requests the City Council to approve the Gridley Electric Utility Wildfire Mitigation Plan for FY 23-24 .

#### Background

Over the last few years, California has experienced several catastrophic wildfires that has resulted in the State Legislature passing SB 901 in September 2018. The law requires California utilities to annually prepare a Wildfire Mitigation Plan (WMP). The City Council adopted our initial WMP in December 2019 for the FY 19-20.

Gridley Electric's WMP (Attached) describes the range of actions that our Electric Utility is taking, or considering, to minimize the sources of ignition and improve the resiliency of the City's electric grid. The WMP complies with the requirements of the Public Utilities Code section 8387 for publicly owned electric utilities to prepare a wildfire mitigation plan. The plan will be iterative, promote continuous improvement year after year, and implement industry best practices in a prudent and reasonable manner.

The Wildfire Safety Advisory Board (WSAB) has joined the California Natural Resources Agency on July 1, 2021, as the Office of Energy Infrastructure Safety (Energy Safety). The WSAB has an electronic, online e-filing system to receive and distribute document filings and provide easy access to information. The CPUC request we update our WMP every year and be submitted to the e-filing system before July 1 deadline.

#### Fiscal Impact

None

#### Compliance with the City Council Strategic Plan

This recommendation is consistent with our ongoing efforts to provide safe and reliable electrical services.

#### Attachments

Wildfire Mitigation Plan 2023



# **CITY OF GRIDLEY WILDFIRE MITIGATION PLAN**

---

*JULY 1, 2023*

## **I. OVERVIEW**

### **A. POLICY STATEMENT**

The Gridley Electric Department's overarching goal is to provide safe, reliable, and economic electric service to our residents and business community. In order to meet this goal, Gridley constructs, maintains, and operates its electrical lines and equipment in a manner that minimizes the risk of catastrophic wildfire posed by its electrical lines and equipment.

### **B. PURPOSE OF THE WILDFIRE MITIGATION PLAN**

This Wildfire Mitigation Plan describes the range of actions that Gridley is taking to mitigate the threat of power-line ignited wildfires, including its various programs, policies, and procedures. This plan is subject to direct supervision by the City Administrator and is implemented by the Electrical Superintendent. This plan complies with the requirements of Public Utilities Code section 8387 for publicly owned electric utilities to prepare a wildfire mitigation plan by January 1, 2020, and annually thereafter. Gridley Electrical is a department within the City of Gridley.

#### **Organization of the Wildfire Mitigation Plan**

This Wildfire Mitigation Plan includes the following elements:

- Objectives of the plan;
- Roles and responsibilities for carrying out the plan;
- Identification of key wildfire risks and risk drivers;
- Description of wildfire prevention, mitigation, and response strategies and programs;
- Community outreach and education;
- Metrics for evaluating the performance of the plan and identifying areas for improvement;
- Review and validation of the plan; and
- Timelines.

## **II. OBJECTIVES OF THE WILDFIRE MITIGATION PLAN**

### **A. MINIMIZING SOURCES OF IGNITION**

The primary goal of this Wildfire Mitigation Plan is to minimize the probability that Gridley's transmission and distribution system may be the origin or contributing source for the ignition of a fire. Gridley has evaluated the prudent and cost-effective improvements to its physical assets, operations, and training that can help to meet this objective. Gridley has implemented those changes consistent with this evaluation.

### **B. RESILIENCY OF THE ELECTRIC GRID**

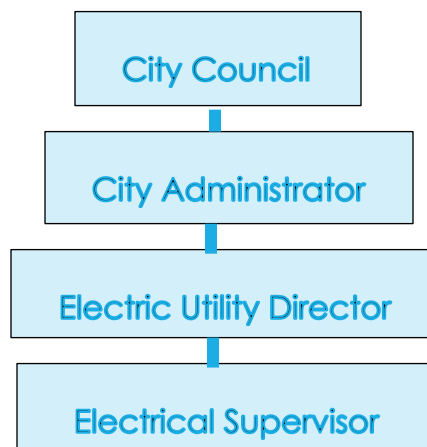
The secondary goal of this Wildfire Mitigation Plan is to improve the resiliency of the electric grid. As part of the development of this plan, Gridley assesses new industry practices and technologies that will reduce the likelihood of an interruption (frequency) in service and improve the restoration (duration) of service.

### **C. MINIMIZING UNNECESSARY OR INEFFECTIVE ACTIONS**

The final goal for this Wildfire Mitigation Plan is to measure the effectiveness of specific wildfire mitigation strategies. Where a particular action, program component, or protocol is determined to be unnecessary or ineffective, Gridley will assess whether a modification or replacement is merited. This plan will also help determine if more cost-effective measures would produce the same or improved results.

### III. ROLES AND RESPONSIBILITIES

#### A. UTILITY GOVERNANCE STRUCTURE



**City Council** - to debate, consider and adopt any policies, regulations or ordinances recommended by the City Administrator and Electric Utility Director as to the safe operations of the City of Gridley's Electrical System in accordance with the Wildfire Mitigation plan.

**City Administrator** - to work with the Electric Utility Director in the implementation of the Wildfire Mitigation Plan and to be a liaison to the City of Gridley Council and Gridley Electrical Department during wildfire events. To be the liaison between the City of Gridley and any outside Governmental agencies in procurement of any needed resources to aid in a Wildfire Event. To be the public relations contact for the City of Gridley during a Wildfire Event.

**Electric Utility Director** - to oversee the operation of the City of Gridley's Electrical Department. To implement the City of Gridley's Wildfire Mitigation Plan as adopted by the City of Gridley Council. To be the liaison between the Gridley Electrical Department and the City of Gridley Administrator during wildfire events. To be the liaison between City of Gridley Departments in providing aid during Wildfire Events. To provide training to Electrical Department staff in the prevention of Wildfire events caused by Electrical Distribution Systems.

**Electrical Supervisor** - to oversee the day-to-day operations of the City of Gridley's Electrical Distribution System. To implement the City of Gridley's Wildfire Mitigation Plan as adopted by the City of Gridley's Council. To be the liaison between the Gridley Electrical Crew and the Gridley Electric Utility Director during Wildfire Events. To report and correct any adverse conditions on the Electrical Distribution that may cause a Wildfire event.

#### B. WILDFIRE PREVENTION

City of Gridley's staff roles and responsibilities for (1) electric facility design, maintenance, and inspection; and (2) vegetation management.

- Operate system in a manner that will minimize potential wildfire risks.
- Take all reasonable and practicable actions to minimize the risk of a catastrophic wildfire caused by Gridley electric facilities.
- Coordinate with federal, state, and local fire management personnel as necessary or appropriate to implement Gridley's Wildfire Mitigation Plan.
- Immediately report fires, pursuant to existing Gridley Electrical practices and the requirements of this Wildfire Mitigation Plan.
- Take corrective action when the staff witnesses or is notified that fire protection measures have not been properly installed or maintained.
- Comply with relevant federal, state, and industry standard requirements, including the industry standards established by the California Public Utilities Commission.
- Collect and maintain wildfire data necessary for the implementation of this Wildfire Mitigation Plan.
- Provide regular training programs for all employees having obligations for implementation of this Wildfire Mitigation Plan.
- Perform annual inspections of distribution system for tree clearances.
- Perform annual tree trimming to maintain a 12-foot clearance around primary lines.

#### C. WILDFIRE RESPONSE AND RECOVERY

During a wildfire event the Gridley Electric Utility Director, and or, the Electrical Supervisor will keep in direct contact and provide regular updates as to the event status with the following Departments and organizations:

- City of Gridley Administrator
- Gridley Police Department
- CalFire
- Gridley Public Works Department

Gridley Electrical utility staff have the following obligations regarding fire prevention, response and investigation:

- Take all reasonable and practicable actions to prevent and suppress fires resulting from Gridley's electric facilities.
- Follow Gridley Electrical Department's protocols during Red Flag Warnings.

#### D. COORDINATION WITH WATER UTILITIES/DEPARTMENT

Gridley Electrical Department will coordinate with the City of Gridley Public Works Department to ensure the reliable delivery of water during any Red Flag or wildfire event, and as needed enlist the help of Public Works personnel to combat any wildfires caused by City of Gridley Electrical Equipment or to aid in any repairs of Gridley's electrical equipment that may cause a wildfire condition.

#### E. COORDINATION WITH COMMUNICATION INFRASTRUCTURE PROVIDERS



During a wildfire event that involves equipment of an outside agency's Communication equipment, the City of Gridley will contact the involved agencies as soon as it is feasibly possible.

#### F. STANDARDIZED EMERGENCY MANAGEMENT SYSTEM

As a local governmental agency, Gridley has planning, communication, and coordination obligations pursuant to the California Office of Emergency Services' Standardized Emergency Management System ("SEMS") Regulations, adopted in accordance with Government Code section 8607. The SEMS Regulations specify roles, responsibilities, and structures of communications at five different levels: field response, local government, operational area, regional, and state. Pursuant to this structure, Gridley annually coordinates and communicates with the relevant safety agencies as well as other relevant local and state agencies.

Under the SEMS structure, a significant amount of preparation is done through advanced planning at the county level, including the coordination of efforts of public, private, and nonprofit organizations. Butte County serves as the Operational Area and is guided by the Butte County Disaster Council that is made up of representatives of Butte. The Operational Area includes local and regional organizations that bring relevant expertise to the wildfire prevention and recovery planning process. These participants include school districts, utilities, Fire Districts, non-profits, Hospitals, special districts, communications providers, and other similar organizations.

Pursuant to the SEMS structure, the City of Gridley participates in annual training exercises. Gridley is also a member of the California Utility Emergency Association, which plays a key role in ensuring communications between utilities during emergencies. Gridley also participates in the Western Energy Institute's Western Region Mutual Assistance Agreement, which is a mutual assistance agreement covering utilities across several western states.

### IV. WILDFIRE RISKS AND DRIVERS ASSOCIATED WITH DESIGN, CONSTRUCTION, OPERATION AND MAINTENANCE

#### A. PARTICULAR RISKS AND RISK DRIVERS ASSOCIATED WITH TOPOGRAPHIC AND CLIMATOLOGICAL RISK FACTORS

Below is a list of wildfire risk drivers that are prioritized and Gridley's Mitigation measures to prevent each risk within Gridley's service territory and the surrounding areas. The primary risk drivers for wildfire are the following:

1. Extended drought – Annual Tree Trimming Program mitigates fires due to overgrown/rotting trees
2. High Winds – Annual GO 95 Inspections and maintenance mitigate fires caused from electrical lines
3. Weather – Annual GO 95 Inspections and maintenance mitigate weather related outages/fires
4. Bark Beetles – Annual Tree Trimming Program allows us to visualize any tree damages related to bark beetle and can be removed before causing any damage
5. Vegetation Health – Annual Tree Trimming Program allows to remove any overgrown or rotten vegetation before causing any damage
6. Changing Weather Patterns (Climate Change) – Annual GO95/128 inspections prevent outages/fires due to hotter, dryer conditions.

7. Fire History – Gives us the information that is needed where extensive measures need to be taken to prevent any reoccurring fires.
8. Terrain – Annual Inspections ensures that we have all access needed in case of any fire threats

## B. ENTERPRISEWIDE SAFETY RISKS

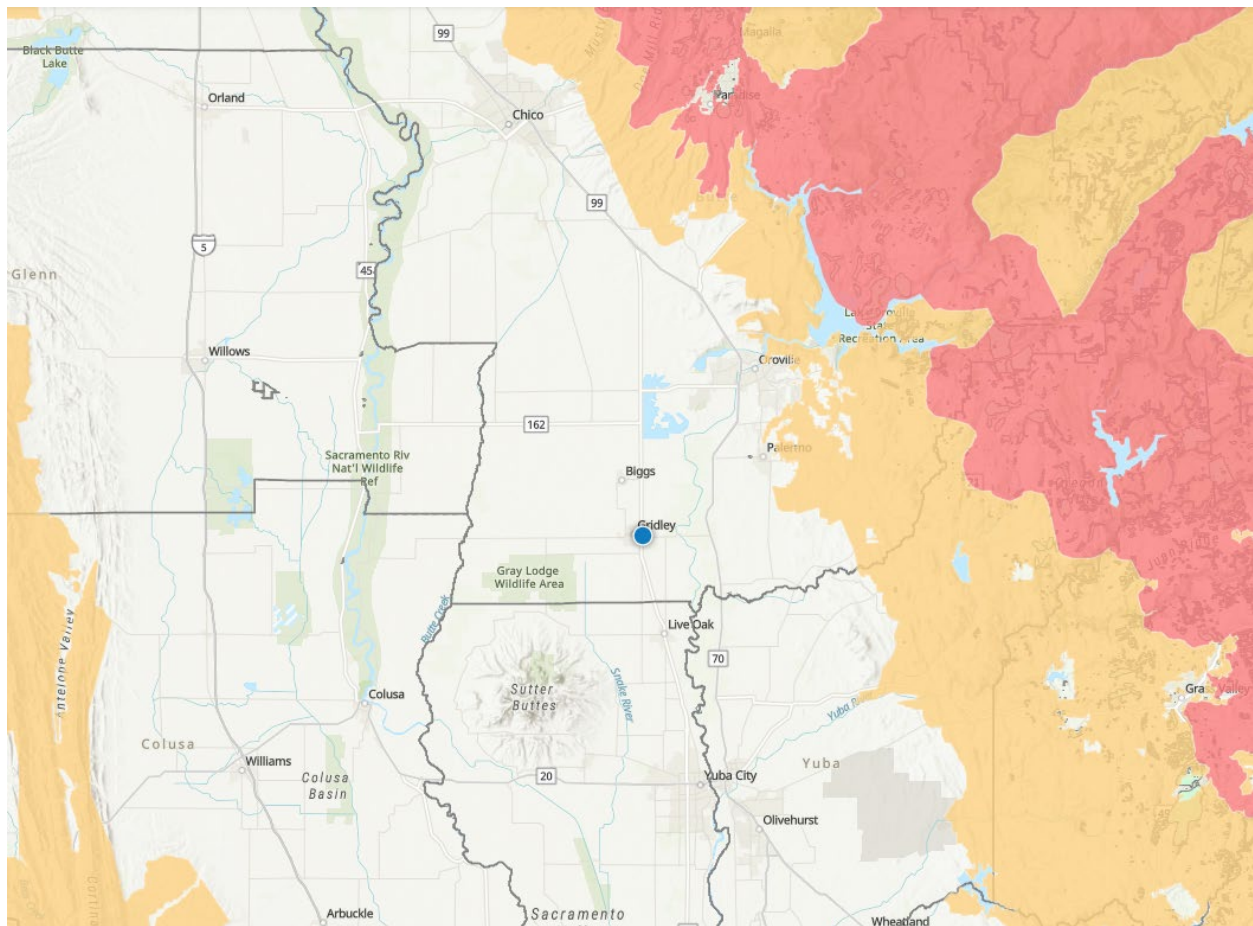
Within Gridley's Distribution system the primary risk drivers for wildfire are the following:

- Electrical system equipment failure
- Falling trees
- Animal contacting energized equipment
- Human error

## C. CHANGES TO CPUC FIRE THREAT MAP

Attached is a copy of the CPUC Fire Threat Map that shows all Tier 1, Tier 2 and Tier 3 fire threat areas in California. The City of Gridley is outside of all three tiers for any high-level threat wildfire areas. Also attached is the website for the CPUC Fire Threat Map website

<https://capuc.maps.arcgis.com/apps/webappviewer/index.html?id=5bdb921d747a46929d9f00dbdb6d0fa2>



## V. WILDFIRE PREVENTATIVE STRATEGIES

### A. HIGH FIRE THREAT DISTRICT

With Gridley not being directly in a High Fire Threat District, we still take the necessary protocols to prevent any possible fires related to our electrical system. Gridley has worked with local fire & government officials to identify the areas of Gridley's service territory that are at an elevated risk of power line ignited fires. Gridley has incorporated the High Fire Threat District map into its construction, inspection, maintenance, repair, and clearance practices, where applicable.

### B. WEATHER MONITORING

Gridley monitors current and forecasted weather data from a variety of sources including:

- United States National Weather Service
- CalFire
- Weather Channel
- Radio news
- Local news outlets

Gridley assigns one of four operating conditions based on the relevant weather data and knowledge of local conditions:

- (1) Normal:** During normal conditions, no changes are made to operations or work policy.
- (2) Elevated:** During elevated fire-risk conditions, Electrical crews are asked to report any areas of concern on or around Gridley's electrical system for potential Wildfire conditions, and to address these concerns during the pre-job tail board discussion
- (3) Extreme:** During extreme fire-risk conditions, and when working in an area at risk to wildfire conditions crews are to prioritize projects, should it be necessary to proceed with the project, crews are asked to report any areas of concern on or around Gridley's electrical system for potential Wildfire conditions, and to address these concerns during the pre-job tail board discussion and if possible to de-energize the lines during the project. Ensure the job site has adequate fire suppression equipment.
- (4) Red Flag:** If the National Weather Service declares a Red Flag Warning for any portion of Gridley service territory, any work performed in a wildfire prone area is postponed unless it is deemed an emergency priority. Should it be deemed an emergency condition, crews are asked to report any areas of concern on or around Gridley's electrical system for potential Wildfire conditions, and to address these concerns during the pre-job tail board discussion and if possible, to de-energize the lines during the project. Ensure the job site has adequate fire suppression equipment. Extra personnel and equipment will be enlisted to monitor the project from the ground for potential fire, and to suppress any fire caused by the project. If deemed necessary, CalFire will be contacted to stand-by during the project.

### C. DESIGN AND CONSTRUCTION STANDARDS

Gridley's electric facilities are designed and constructed to meet or exceed the relevant federal, state, or industry standard. Gridley treats CPUC General Order (GO) 95 as a key industry standard for design and construction standards for overhead electrical facilities. Gridley meets or exceeds all standards in GO 95. Additionally, Gridley monitors and follows as appropriate the National Electric Safety Code.

### D. VEGETATION MANAGEMENT

Gridley meets or exceeds the minimum industry standard vegetation management practices. For transmission-level facilities, Gridley complies with NERC FAC-003-4, where applicable. For both transmission and distribution level facilities, Gridley meets: (1) Public Resources Code section 4292; (2) Public Resources Code section 4293; (3) GO 95 Rule 35; and (4) the GO 95 Appendix E Guidelines to Rule 35. These standards require significantly increased clearances in the High Fire Threat District. The recommended time-of-trim guidelines do not establish a mandatory standard, but instead provide useful guidance to utilities. Gridley will use specific knowledge of growing conditions and tree species to determine the appropriate time of trim clearance and ground vegetation in each circumstance.

**GO 95, Rule 35, Table 1**

Case	Type of Clearance	Trolley Contact, Feeder and Span Wires, 0-5kv	Supply Conductors and Supply Cables, 750 - 22,500 Volts	Supply Conductors and Supply Cables, 22.5 - 300 kV	Supply Conductors and Supply Cables, 300 - 550 kV (mm)
13	Radial clearance of bare line conductors from tree branches or foliage	18 inches	18 inches	¼ Pin Spacing	½ Pin Spacing
14	Radial clearance of bare line conductors from vegetation in the Fire-Threat District	18 inches	48 inches	48 inches	120 inches

#### **Appendix E Guidelines to Rule 35**

The radial clearances shown below are recommended minimum clearances that should be established, at time of trimming, between the vegetation and the energized conductors and associated live parts where practicable. Reasonable vegetation management practices may make it advantageous for the purposes of public safety or service reliability to obtain greater clearances than those listed below to ensure compliance until the next scheduled maintenance. Each utility may determine and apply additional appropriate clearances beyond clearances listed below, which take into consideration various factors, including: line operating voltage, length of span, line sag, planned maintenance cycles, location of vegetation within the span, species type, experience with particular species, vegetation growth rate and characteristics, vegetation management standards and best practices, local climate, elevation, fire risk, and vegetation trimming requirements that are

applicable to State Responsibility Area lands pursuant to Public Resource Code Sections 4102 and 4293.		
<b>Voltage of Lines</b>	<b>Case 13</b>	<b>Case 14</b>
Radial clearances for any conductor of a line operating at 2,400 or more volts, but less than 72,000 volts	4 feet	12 feet
Radial clearances for any conductor of a line operating at 72,000 or more volts, but less than 110,000 volts	6 feet	20 feet
Radial clearances for any conductor of a line operating at 110,000 or more volts, but less than 300,000 volts	10 feet	30 feet
Radial clearances for any conductor of a line operating at 300,000 or more volts	15 feet	30 feet

Within the High Fire Threat District, Gridley performs on an annual basis an evaluation of every tree that has the potential to strike overhead facilities if it were to fall. Gridley performs more frequent and detailed inspections of any such trees, and in cases where “hazard trees” (dead, dying, diseased or leaning) could strike the facilities, will work with the landowner to remove the tree or portion of the tree that poses a risk.

#### E. INSPECTIONS

Gridley meets or exceeds the minimum inspection requirements provided in CPUC GO 165 and CPUC GO 95, Rule 18. Pursuant to these rules, Gridley inspects electric facilities in the High Fire Threat District more frequently than the other areas of its service territory. Additionally, Gridley staff uses their knowledge of the specific environmental and geographical conditions to determine when areas outside of the High Fire Threat District require more frequent inspections.

If Gridley staff discovers a facility in need of repair that is owned by an entity other than Gridley, Gridley will issue a notice to repair to the facility owner and work to ensure that necessary repairs are completed promptly.

Gridley works to ensure that all inspections to be performed within the High Fire Threat District are completed before the beginning of the historic fire season, [typically September 1]. Gridley monitors drought conditions and other relevant factors throughout the year to determine if inspections should be completed in a shorter timeframe. Below is a list of our inspections and frequency.

- Go 165 OH Visual Inspections – Yearly
- Go 95 OH Detailed Inspections – 5 Years
- Go 128 UG Inspections – 3 Years
- Intrusive Pole Test – 15 Years
- Tree Trimming - Yearly

#### F. WORKFORCE TRAINING

Gridley has implemented work rules and complementary training programs for its workforce to help reduce the likelihood of the ignition of wildfires.

Gridley has implemented into its daily operations 4 conditions based on current weather conditions.

- Normal
- Elevated
- Extreme
- Red Flag

Gridley has added a Wildfire Mitigation Plan and fire safety training to its safety training program. Gridley Electric Employees receive training from local CalFire stations in proper fire extinguisher use for certain situations.

#### G. RECLOSING POLICY

##### **During Red Flag Warnings:**

**Line Reclosers-** will be put in a non-reclosing setting for areas that serve as a high fire threat. Should a Line Recloser open during this period, the Line reclosing device shall not be closed until the distribution line it serves has been inspected for the cause of the equipment's operation. When the equipment and distribution line is re-energized, the distribution line will be inspected for safe operation.

**Substation Circuit Breaker-** relays will be put in a non-reclosing setting. Should a relay operate during this period, the relay device will not be closed until the distribution line being served by the affected relay is inspected for the cause of the operation. When the substation breaker is closed the distribution line being served by the breaker will be inspected for safe operation.

#### H. DEENERGIZATION

Gridley has the authority to preemptively shut off power due to fire-threat conditions; however, this option will only be used in extraordinary circumstances. Gridley's mitigation efforts include an annual tree trimming program, maintenance inspections program, pole replacement program and installation of generators to lessen the impacts of de-energization on critical first responders and health and communication infrastructure. Gridley will make a case-by-case decision to shut off power based on the following considerations:

- Red Flag Warnings issued by the National Weather Service for fire weather zones that contain Gridley circuits
- Gridley staff assessments of local conditions, including wind speed (sustained and gust), humidity and temperature, fuel moisture, fuel loading and data from weather stations
- Real-time information from staff located in areas identified as at risk of being subject to extreme weather conditions
- Input from Gridley fire experts and vegetation experts
- Input from local and state fire authorities regarding the potential consequences of wildfires in select locations
- Alternative ways to reroute power to affected areas
- Awareness of mandatory or voluntary evacuation orders in place
- Expected impact of de-energizing circuits on essential services
- Other operational considerations to minimize potential wildfire ignitions, including the blocking of reclosers on the identified circuit(s)
- On-going fire activity throughout Gridley's territory and California
- Ability to notify customers

- Notifications to local governments and public officials
- Potential impacts to communities and customers

---

### 1. IMPACTS TO PUBLIC SAFETY

The following conditions may occur during a fire threat power shutdown:

- Residential areas will lose power
- Schools will lose power
- Hospital will be on back-up generation power
- Stores will lose power
- Gas stations will lose power
- Traffic signals will be on battery back-up power
- Street lights will not work
- Water supply will be on back-up generation power
- Sewer will be on back-up generation power
- City Hall and Police departments will be on back-up generator power

---

### 2. CUSTOMER NOTIFICATION PROTOCOLS

Gridley will make every attempt to give advance notice to its customers of any planned wildfire prevention power shutdowns. Should a wildfire prevention power shut down be planned, Gridley will notify all public safety offices, critical first responders, health care facilities, operators of telecommunications infrastructure and its customers in the following ways:

- Signage at City Hall
- Phone calls
- Social media post
- Automated phone calls and text
- Local news paper
- Monthly Bill mailings
- Hwy 99 messaging sign

All critical facilities such as Orchard Hospital, Police Dept., Fire Dept., City Hall, and all city wells have back- up generators in case of any sudden power loss or possible de-energization due to a fire threat. Gridley Electrical Department will coordinate with the City of Gridley Public Works Department with direct contact to PW Director or Supervisor to ensure the reliable delivery of water during any Red Flag or wildfire event and as needed enlist the help of Public Works personnel to combat any wildfires caused by City of Gridley Electrical Equipment or to aid in any repairs of Gridley's electrical equipment that may cause a wildfire condition.

## VI. COMMUNITY OUTREACH AND PUBLIC AWARENESS

The City will annually evaluate its community outreach and public awareness communications efforts.

## VII. RESTORATION OF SERVICE



Gridley will make every attempt to restore power to residents as soon as possible. Once all equipment inspections that is needed, priority power restoration will be given to critical circuits such as Hospital, CalFire, Police facilities, Senior Facilities and Schools.

## **VIII. EVALUATING OF THE PLAN**

### **A. METRICS AND ASSUMPTIONS FOR MEASURING PLAN PERFORMANCE**

Gridley will track two metrics to measure the performance of this Wildfire Mitigation Plan: (1) number of fire ignitions; and (2) wires down within the service territory.

#### **METRIC 1: FIRE IGNITIONS**

For purposes of this metric, a fire ignition is defined as follows:

- Gridley facility was associated with the fire;
- The fire was self-propagating and of a material other than electrical and/or communication facilities;
- The resulting fire traveled greater than one linear meter from the ignition point; and
- Gridley has knowledge that the fire occurred.

In future Wildfire Mitigation Plans, Gridley will provide the number of fires that occurred that were less than 10 acres in size. Any fires greater than 10 acres will be individually described.

#### **METRIC 2: WIRES DOWN**

The second metric is the number of distribution and transmission wires downed within Gridley's service territory. For purposes of this metric, a wire down event includes any instance where an electric transmission or primary distribution conductor falls to the ground or on to a foreign object. Gridley will divide the wires down metric between wires down inside and outside of the High Fire Threat District.

Gridley will not normalize this metric by excluding unusual events, such as severe storms. Instead, Gridley will supplement this metric with a qualitative description of any such unusual events.

### **B. IMPACT OF METRICS ON PLAN**

In the initial years, Gridley anticipates that there will be relatively limited data gathered through these metrics. However, as the data collection history becomes more robust, Gridley will be able to identify areas of its operations and service territory that are disproportionately impacted. Gridley will then evaluate potential improvements to the plan.

### **C. MONITORING AND AUDITING THE PLAN**

This Wildfire Mitigation Plan will be presented to Gridley City Council. Gridley will present this plan to the Gridley Council on an annual basis.

### **D. IDENTIFYING AND CORRECTING DEFICIENCIES IN THE PLAN** **E. MONITORING THE EFFECTIVENESS OF INSPECTIONS**

The Cities Electrical inspections will be done in a timely manner, with repairs being prioritized from a high threat level to a lesser threat level to prevent any fires or possible damages.



## **IX. INDEPENDENT AUDITOR**

Public Utilities Code section 8387(c) requires the City of Gridley to contract with a qualified independent evaluator with experience in assessing the safe operation of electrical infrastructure to review and assess the comprehensiveness of this Wildfire Mitigation Plan. The independent evaluator must issue a report that is posted to the City's website. This report must also be presented to the City Council at a public meeting.



**City Council Agenda Item #2**  
Staff Report

**Date:** June 27, 2023

**To:** Mayor and City Council

**From:** City Administrator, Cliff Wagner

**Subject:** Approval of FY 2023-2024 Operating Budget & Capital Improvement Plan and Resolutions

	Regular
<b>X</b>	Special
	Closed
	Emergency

---

**Recommendation**

Staff respectfully requests that the Mayor and City Council consider and approve:

- Resolution No. 2023-R-021 Establishing the 2023-2024 Appropriations Limit for the City of Gridley
- Resolution 2023-R-022, A Resolution of the City of Gridley Adopting a Budget for Fiscal Year 2023-2024

**Background**

The budget schedule highlights the process required to develop the Annual Operating Budget and Capital Improvement Plan (CIP). The City schedules three public hearings. All processes have been completed with the exception of the Council's final review approval of the FY 2023-2024 Operating Budget. Following the Council's anticipated action, staff will take up the task of inputting the budget contents into our current City financial software. Ideally, that process will be completed by June 30th, the last working day before the new fiscal year begins.

The City Council received extensive details regarding the General Fund, Enterprise Funds, Special Revenue Funds, the Fee Schedules, and Capital Improvement Plan during the June 20<sup>th</sup> through June 22<sup>nd</sup>, 2023 public Budget Study Session meetings. The presentation provided departmental presentations from the Electric, Public Works (including parks, water, sewer, and streets), Fire, Recreation, Police, Planning & Engineering, Finance & Administration budgets.

**Fiscal Impact**

The Proposed FY 2023-2024 Operating Budget is staff's comprehensive effort to present a policy document which preserves fiscal stability and at the same time enables the City Council and staff to accomplish crucial projects and services. Adopting a proposed budget which enables a City to sustainably and efficiently provide services is one of the most important duties a City Council can participate in.

**Compliance with City Council Strategic Plan or Budget Goals**

The City Council and City staff are committed to provide the best possible financial practices and the highest possible transparency regarding all financial transactions.

**Attachments**

1. Resolution No. 2023-R-021: A Resolution of the City of Gridley City Council Establishing the FY 2023-2024 Appropriations Limit for the City of Gridley.
2. Resolution No. 2023-R-022: A Resolution of the City of Gridley Adopting a Budget for Fiscal Year 2023-2024.



**A RESOLUTION OF THE CITY OF GRIDLEY CITY COUNCIL  
ESTABLISHING THE FY 2023-2024 APPROPRIATIONS LIMIT FOR THE CITY OF GRIDLEY**

**WHEREAS**, SB 1352 was enacted by the California State Legislature during the 1980 Session which specifically adds Division 9, Chapter 1205 (commencing with Section 79000) to Title 1 of Government Code; and

**WHEREAS**, SB 1352 was enacted to provide for the implementation of voter approved Proposition 4, also known as the “Gann Initiative” whose purpose was to limit governmental appropriations; and

**WHEREAS**, the voters of California did approve Proposition 111 in June 1990, which, among other provisions, allows for new adjustment formulas for calculating the City’s annual appropriations limit; and

**WHEREAS**, the appropriations limit has been calculated for the City of Gridley by the City Finance Department in accordance with the Uniform Guidelines for Implementation of the Gann Initiative and Proposition 111, as promulgated by the League of California Cities.

**NOW, THEREFORE, IT IS HEREBY RESOLVED** by the City Council of the City of Gridley as follows:

- 1.) For fiscal year 2023-2024, the City Council approved the selection and usage of the “California Per Capita Income” percentage change and the population growth percentage increase for the City of Gridley when calculating that year’s appropriations limit. The FY 2023-2024 appropriations limit may be amended at some future date due to a change in the factor used in this calculation. The choice of factors to be used for the FY 2022-2024 calculation was limited to use of the California Per Capita Income change due to the unavailability of the “percentage change in the local assessment roll from the preceding year due to the addition of local nonresidential construction in the City”. (The County of Butte, Assessor’s Office reports this factor has not been determined.) Therefore, when the factor depicting the percentage change in the local assessment roll from the preceding year due to the addition of local non-residential construction in the City is available, should it be greater than the California Per capita Income factor, the FY 2022-2023 Appropriations Limit could be recalculated to reflect the higher factor.
- 2.) The Appropriations Limit is hereby established for the City in the amount of \$23,584,892 for fiscal year 2023-2024 in conformance with the attached Exhibit A and Article XIII B of the Constitution as amended.

**I HEREBY CERTIFY** that the foregoing resolution was duly introduced and passed at a special meeting of the City Council of the City of Gridley held on the 27<sup>th</sup> day of June 2023, by the following vote:

AYES: COUNCIL MEMBERS

NOES: COUNCIL MEMBERS

ABSTAIN: COUNCIL MEMBERS

ABSENT: COUNCIL MEMBERS

ATTEST:

APPROVED:

---

Cliff Wagner, City Clerk

---

Michael W Farr, Mayor

**EXHIBIT A - Gann Initiative - Appropriation Limit Calculation**  
For the Fiscal Year ended June 30, 2024

**2023-2024 Appropriation Limit Calculation**

Price factor information:

Prior year amount	7.55
Current year amount	4.44

Population information:

Prior year population	7,473
Current year population	7,548

Per Capita Change: 1.00

Population Change: 4.44

Per Capita converted to a ratio:  $\frac{1.00 + 100}{100} = 1.010036$

Population converted to a ratio:  $\frac{4.44 + 100}{100} = 1.044400$

Calculation of factor for FY 2021-2022:  $1.010036 \times 1.04440 = 1.054882$

**2023-2024 Appropriation Limit:**

2022-2023 Appropriation Limit	\$22,357,854
Multiplied by Factor	<u>1.054882</u>
2023-2024 Appropriation Limit	<u><b>\$23,584,892</b></u>

**A RESOLUTION OF THE CITY OF GRIDLEY CITY COUNCIL  
ADOPTING A BUDGET FOR FISCAL YEAR 2023-2024**

**WHEREAS**, a Proposed Annual Operating Budget for Fiscal Year 2023-2024 was presented to the City Council of the City of Gridley and Gridley community members at three public Council meetings on June 20<sup>th</sup>, June 21<sup>st</sup>, June 22<sup>nd</sup>, 2023; and

**WHEREAS**, the Council desires to incorporate the proposed changes, additions, and deletions discussed at the various public budget meetings into the Proposed FY 2023-2024 Operating Budget as provided in the records of the pertinent meetings; and

**NOW, THEREFORE, BE IT RESOLVED AND ORDERED** that the City Council of the City of Gridley does hereby adopt the Annual Operating Budget for the City for FY 2023-2024, as described above and attached Exhibit A:

**I HEREBY CERTIFY** that the foregoing resolution was duly introduced and passed at a special meeting of the City Council of the City of Gridley held on the 27<sup>th</sup> day of June 2023, by the following vote:

AYES: COUNCIL MEMBERS

NOES: COUNCIL MEMBERS

ABSENT: COUNCIL MEMBERS

ABSTAIN: COUNCIL MEMBERS

ATTEST:

APPROVE:

\_\_\_\_\_  
Cliff Wagner, City Clerk

\_\_\_\_\_  
Michel W. Farr, Mayor

EXHIBIT A - Gann Initiative - Appropriation Limit  
Calculation For the Fiscal Year ended June 30, 2020

2019-2020 Appropriation Limit Calculation

Price factor information:

Prior year amount	3.67
Current year amount	3.85

Population information:

Prior year population	6,937
Current year population	7,224

Per Capita Change: 4.38

Population Change: 3.85

Per Capita converted to a ratio:  $\frac{4.38 + 100}{100} = 1.043800$

Population converted to a ratio:  $\frac{3.85 + 100}{100} = 1.038500$

Calculation of factor for FY 2019-2020:  $1.043800 \times 1.038500 = 1.083986$

2019-2020 Appropriation Limit:

2018-2019 Appropriation Limit \$21,082,361

Multiplied by Factor 1.083986

2019-2020 Appropriation Limit \$22,852,990



EXHIBIT A - Gann Initiative - Appropriation Limit  
Calculation For the Fiscal Year ended June 30, 2021

2020-2021 Appropriation Limit Calculation

Price factor information:

Prior year amount	3.85
Current year amount	3.73

Population information:

Prior year population	7,058
Current year population	6,402

Per Capita Change: (9.29)

Population Change: 3.73

	$\frac{9.29 + 100}{100}$	= 0.907100
Per Capita converted to a ratio:		

	$\frac{3.73 + 100}{100}$	= 1.037300
Population converted to a ratio:		

Calculation of factor for FY 2020-2021: .907100 x 1.037300 = 0.940935

2020-2021 Appropriation Limit:

2019-2020 Appropriation Limit	\$22,852,990
-------------------------------	--------------

Multiplied by Factor	<u>0.940935</u>
----------------------	-----------------

2020-2021 Appropriation Limit	<u>\$21,503,174</u>
-------------------------------	---------------------

EXHIBIT A - Gann Initiative - Appropriation Limit  
Calculation For the Fiscal Year ended June 30, 2022

2021-2022 Appropriation Limit Calculation

Price factor information:

Prior year amount	3.73
Current year amount	5.73

Population information:

Prior year population	6,515
Current year population	6,129

Per Capita Change: (5.92)

Population Change: 5.73

	$\frac{5.92 + 100}{100}$	= 0.940800
Per Capita converted to a ratio:		

	$\frac{5.73 + 100}{100}$	= 1.057300
Population converted to a ratio:		

Calculation of factor for FY 2021-2022: .940800 x 1.057300 = 0.994708

2021-2022 Appropriation Limit:

2020-2021 Appropriation Limit \$21,503,174

Multiplied by Factor 0.994708

2021-2022 Appropriation Limit \$21,389,376

EXHIBIT A - Gann Initiative - Appropriation Limit  
Calculation For the Fiscal Year ended June 30, 2022

2022-2023 Appropriation Limit Calculation

Price factor information:

Prior year amount	5.73
Current year amount	7.55

Population information:

Prior year population	7,413
Current year population	7,205

Per Capita Change: (2.81)

Population Change: 7.55

	$\frac{2.81 + 100}{100}$	= 0.971900
Per Capita converted to a ratio:		

	$\frac{7.55 + 100}{100}$	= 1.075500
Population converted to a ratio:		

Calculation of factor for FY 2021-2022: .971900 x 1.075500 = 1.045278

2022-2023 Appropriation Limit:

2021-2022 Appropriation Limit	\$21,389,376
-------------------------------	--------------

Multiplied by Factor	<u>1.045278</u>
----------------------	-----------------

2022-2023 Appropriation Limit	<u>\$22,357,854</u>
-------------------------------	---------------------

## **2023-2024 Appropriation Limit Calculation**

### Price factor information:

Prior year amount	7.55
Current year amount	4.44

### Population information:

Prior year population	7,473
Current year population	7,548

Per Capita Change: 4.44

Population Change: 1.00

Per Capita converted to a ratio:  $\frac{4.44 + 100}{100} = 1.044400$

Population converted to a ratio:  $\frac{(1.00) + 100}{100} = 1.010036$

Calculation of factor for FY 2021-2022:  $1.057300 \times 0.940752 = 1.054882$

### **2023-2024 Appropriation Limit:**

2022-2023 Appropriation Limit	\$22,304,578
Multiplied by Factor	<u>1.054882</u>
2023-2024 Appropriation Limit	<u><b>\$23,528,692</b></u>

# SUMMARY OF 23-24 BUDGET

FUND	FY 23-24 EXPENDITURES	TRANSFERS OUT	TOTAL FY 23-24 APPROPRIATION AUTHORITY
<b>GENERAL FUND</b>			
<b>ADMINISTRATION</b>			
CITY COUNCIL	\$130,419		\$130,419
CODE ENFORCEMENT	51,554		51,554
CLERK/ADMINISTRATION	392,497		392,497
CITY ATTORNEY	135,331		135,331
CITY HALL MAINTENANCE	74,527		74,527
CONTRIBUTIONS	0		0
FINANCE	352,239		352,239
<b>PUBLIC SAFETY</b>			
POLICE DEPARTMENT	3,905,367		3,905,367
BINTF	190,240		190,240
SCHOOL RESOURCE OFFICER	177,171		177,171
PD MAINTENANCE	12,070		12,070
ANIMAL CONTROL	144,956		144,956
FIRE DEPARTMENT	1,261,665		1,261,665
<b>DEVELOPMENT</b>			
ENGINEERING	130,000		130,000
BUILDING INSPECTION	450		450
PLANNING	367,048		367,048
<b>PUBLIC WORKS</b>			
STREET MAINTENANCE	307,317		307,317
CORP YARD	286,242		286,242
<b>PARKS &amp; RECREATION</b>			
PARKS	145,478		145,478
RECREATION	237,631		237,631
<b>TOTAL GENERAL FUND</b>	<b>\$8,302,204</b>	<b>\$0</b>	<b>\$8,302,204</b>

**SPECIAL REVENUE FUNDS**

2008 SERIES A - FUND 204	206,792		206,792
2008 SERIES B - FUND 206	65,545		65,545
SUCCESSOR AGENCY - FUND 215	0		0
GAS TAX 2105 - FUND 390	331,259		331,259
GAS TAX 2103 - FUND 395	107,138		107,138
GAS TAX 2106 - FUND 400	89,480		89,480
GAS TAX 2107 - FUND 410	55,847		55,847
GAS TAX 2107.5 - FUND 420	3,383		3,383
SB 325 - FUND 425	0		0
SB 325 - FUND 430	280,142		280,142
TRAFFIC SAFETY - FUND 440	31,500		31,500
PS AUGMENTATION - FUND 460			0
BOAT RAMP - FUND 480	4,676		4,676
ECON DEVEL CDBG REHAB - FUND 511	0		0
HOUSING REHAB RLF - FUND 513	9,472		9,472
FLOOD MAINT. # 1 (RICHINS) - FUND 580	1,486		1,486
FLOOD MAINT. # 2 (EAGLE MEADOWS) - FUND 581	19,381		19,381
FLOOD MAINT. # 3 (HERON LANDING) - FUND 582	20,697		20,697
FLOOD MAINT. # 6 (SCROGGINS) - FUND 583	9,180		9,180
COPS GRANTS FUND - FUND 672	30,500	35,000	65,500
ARPA FUND - FUND 930	0		0
CARB CREDIT - FUND 928	0		0
OUTDOOR EQUITY GRANT - FUND 932	41,030		41,030
<b>TOTAL SPECIAL REVENUE FUNDS</b>	<b>\$1,307,509</b>	<b>\$35,000</b>	<b>\$1,342,509</b>

**ENTERPRISE FUNDS****ELECTRIC FUND - FUND 600**

ELECTRIC - PROGRAM 4600

STREET TREE MAINT. - PROGRAM 4601

CAPITAL IMPROVEMENTS - PROGRAM 4608

**PUBLIC BENEFITS - FUND 610****WATER UTILITY FUND - FUND 630**

WATER - PROGRAM 4630

**SEWER UTILITY FUND - FUND 650**

SEWER OPERATING - PROGRAM 4650

SEWER PLANT - PROGRAM 4651

SEWER TOWN - PROGRAM 4652

SEWER BCHA - PROGRAM 4653

SEPTAGE HAULERS - PROGRAM 4658

**SB 325 TAXI FUND - FUND 700**

8,177,298	1,400,000	9,577,298
0		0
0		0
28,516		28,516
1,179,950		1,179,950
577,992		577,992
630,214		630,214
784,022		784,022
3,955		3,955
132		132
155,408		155,408

**TOTAL ENTERPRISE FUNDS**

<b>\$11,537,486</b>	<b>\$1,400,000</b>	<b>\$12,937,486</b>
---------------------	--------------------	---------------------

**TOTAL RESERVE FUNDS**

GENERAL FUND RESERVE - FUND 011

CITY HALL RESERVE - FUND 050

EQUIPMENT RESERVE - FUND 060

ELECTRIC CAPITAL FUND - FUND 620

ELECTRIC CONST FUND - FUND 621

WATER CAPITAL FUND - FUND 640

0		0
0		0
0		0
0		0
0		0
0		0

**TOTAL RESERVE FUNDS**

<b>\$0</b>	<b>\$0</b>	<b>\$0</b>
------------	------------	------------

<b>TOTAL</b>	<b>\$21,147,199</b>	<b>\$1,435,000</b>	<b>\$22,582,199</b>
--------------	---------------------	--------------------	---------------------





### City Council Agenda Item #3

**Date:** June 27, 2023

**To:** Mayor and City Council

**From:** Elisa Arteaga, Finance Director

**Subject:** Four Resolutions Authorizing the Levy of Assessment District Expenses for the Butte County 2023-2024 Tax Roll

---

	Regular
x	Special
	Closed
	Emergency

#### Recommendation

City staff respectfully requests that the Mayor and City Council receive a staff report and consider adoption of the four assessment district resolutions and approval of Resolution No. 2023-R-023, 2023-R-024, 2023-R-025, and 2023-R-026

#### Background

The Gridley City Council previously approved the formation of the maintenance districts to construct, operate and maintain various public improvements within the newer subdivisions in the City under provisions of the Improvement Act of 1911. To finance the annual maintenance of this infrastructure, it is required to assess the expenses of maintenance and operation of the improvements upon the real property within the district to be benefited thereby. These resolutions represent the completion of that annual assessment process.

#### Analysis

The City Engineer for the City of Gridley caused a report to be prepared in the manner provided by law, including the improvement act of 1911, as well as the California State Constitution, Article XIII D, to set the amount and basis of the amounts to be assessed against each parcel within the districts, the adjustments to be made to annual assessments based upon increases in the Consumer Price Index and other particulars relating to the district. Pursuant to the provisions of Proposition 218, namely Article XIII D of the California Constitution, the City, after giving due and proper notice as required by Proposition 218, at its meeting of October 17, 2005 conducted a public hearing on the proposed modifications to the assessment pursuant to California Constitution Article XIII D, Section 4(e). The Tax Collector of the County of Butte was requested to levy and add to the tax bill sent by the County to the owner of each parcel of real property within the boundaries of the districts and operation and maintenance assessment for the fiscal year commencing 2005/2006, and for each year thereafter, which assessment was collected from each land owner with the proportioning of the collection between the first installment and the second installment to be determined by the County Tax Collector.

**Financial Impact**

The recommended service level for the maintenance districts will be the same as prior years. The City has the authority to charge a CPI increase, but the City has not done so in several years. The City is not recommending a CPI increase at this time.

**Compliance with the City Council Strategic Plan or Budget Goals**

This presentation is consistent with our ongoing effort to be responsive and transparent regarding all financial matters, as well as be congruent with best financial practices.

**Attachments**

1. Resolution 2023-R-023 - Richins
2. Resolution 2023-R-024 - Bowwood
3. Resolution 2023-R-025 – Heron Landing
4. Resolution 2023-R-026 – Eagle Meadows

**A RESOLUTION OF THE CITY COUNCIL  
OF THE CITY OF GRIDLEY TO LEVY ASSESSMENT DISTRICT NO. 1 ON BUTTE COUNTY 2023-2024 TAX ROLL**

**WHEREAS**, the Gridley City Council previously approved the formation of Maintenance District #1 (Resolution No. 25 (1999 Series)) to construct, operate and maintain the specific facility of storm and flood water within the Richins subdivision under the benefit act of 1982, (Streets and Highways Code Section 3110, and 5821 et seq); and

**WHEREAS**, the City Council of the City of Gridley has determined that it is appropriate and necessary to assess the expenses of maintenance and operation of the improvements upon the real property within the district to be benefited thereby; and

**WHEREAS**, the City Engineer for the City of Gridley caused a report to be prepared in the manner provided by law, including the improvement act of 1982, as well as the California State Constitution, Article XIII 4(e)) to set the amount and basis of the amounts to be assessed against each parcel within the Assessment District, the adjustments to be made to annual assessments based upon increases in the Consumer Price Index and other particulars relating to the District, and

**WHEREAS**, the Tax Collector of the County of Butte was requested to levy and add to the tax bill sent by the County to the owner of each parcel of real property within the boundaries of the Gridley Maintenance Assessment District No. 1, and operation and maintenance assessment for the fiscal year commencing 1999/2000, and for each year thereafter, which assessment was collected from each land owner with the proportioning of the collection between the first installment and the second installment to be determined by the County Tax Collector; and

**WHEREAS**, Government Codes 54703 & 54718 provides the authority for the City to place the assessment on the tax roll.

**NOW, THEREFORE**, the City Council of the City of Gridley approved the assessment for 2023-2024 for the amount of \$113.52 without any CPI increase (Exhibit "A"). The benefit is to be provided to the owner of each parcel of real property within the boundaries of the Gridley Maintenance Assessment District No.1.

**I HEREBY CERTIFY** that this Resolution of the City Council of the City of Gridley was duly introduced and passed at a Special Meeting of the City Council of the City of Gridley held on the 27<sup>th</sup> day of June 2023 by the following vote:

AYES: COUNCIL MEMBERS

NOES: COUNCIL MEMBERS

ABSENT: COUNCIL MEMBERS

ABSTAIN: COUNCIL MEMBERS

ATTEST:

APPROVE:

\_\_\_\_\_  
Cliff Wagner, City Administrator

\_\_\_\_\_  
Michael W. Farr, Mayor

EXHIBIT "A"

010330001000	113.52	76002
010330002000	113.52	76002
010330003000	113.52	76002
010330004000	113.52	76002
010330005000	113.52	76002
010330006000	113.52	76002
010330007000	113.52	76002
010330008000	113.52	76002
010330009000	113.52	76002
010330010000	113.52	76002
010330011000	113.52	76002
010330012000	113.52	76002
010330013000	113.52	76002
010330014000	113.52	76002
010330015000	113.52	76002
010330016000	113.52	76002
010330017000	113.52	76002
010330018000	113.52	76002
010330019000	113.52	76002
010330020000	113.52	76002
010330021000	113.52	76002
010330022000	113.52	76002
010330023000	113.52	76002
010330024000	113.52	76002
010330025000	113.52	76002
010330026000	113.52	76002
010330027000	113.52	76002
010330028000	113.52	76002
010330029000	113.52	76002
010330030000	113.52	76002

010330031000	113.52	76002
010330032000	113.52	76002
010330033000	113.52	76002
010330034000	113.52	76002
010330035000	113.52	76002
010330036000	113.52	76002
010330037000	113.52	76002
010330038000	113.52	76002
010330039000	113.52	76002
010330040000	113.52	76002
010330041000	113.52	76002
010330042000	113.52	76002
010330043000	113.52	76002
010330044000	113.52	76002
010330045000	113.52	76002
010330046000	113.52	76002
010330047000	113.52	76002
010330048000	113.52	76002

010330049000	113.52	76002
010330050000	113.52	76002
010330051000	113.52	76002
010330052000	113.52	76002
010330053000	113.52	76002
010330054000	113.52	76002
010330055000	113.52	76002
010330056000	113.52	76002
010330057000	113.52	76002
010330058000	113.52	76002
010330059000	113.52	76002
010330060000	113.52	76002
010330061000	113.52	76002
010330062000	113.52	76002
010330063000	113.52	76002
010330064000	113.52	76002
010330065000	113.52	76002
010330066000	113.52	76002
010330067000	113.52	76002
010330068000	113.52	76002
010330069000	113.52	76002
010330070000	113.52	76002
010330071000	113.52	76002
010330072000	113.52	76002
010330073000	113.52	76002
010330074000	113.52	76002
010330075000	113.52	76002

**A RESOLUTION OF THE CITY COUNCIL  
OF THE CITY OF GRIDLEY TO LEVY ASSESSMENT DISTRICT NO. 6 ON BUTTE COUNTY 2023-2024 TAX ROLL**

**WHEREAS**, the Gridley City Council previously approved the formation of Maintenance District # 6 (Resolution No. 2008-R-047) to construct, operate and maintain various public improvement within Bowwood Estates under the improvement act of 1911, (Streets and Highways Code Section 5820, and 5821 et seq); and

**WHEREAS**, the City Council of the City of Gridley has determined that it is appropriate and necessary to assess the expenses of maintenance and operation of the improvements upon the real property within the district to be benefited thereby; and

**WHEREAS**, the City Engineer for the City of Gridley caused a report to be prepared in the manner provided by law, including the improvement act of 1911, as well as the California State Constitution, Article XIII D to set the amount and basis of the amounts to be assessed against each parcel within the Assessment District, the adjustments to be made to annual assessments based upon increases in the Consumer Price Index and other particulars relating to the District, and

**WHEREAS**, the Tax Collector of the County of Butte was requested to levy and add to the tax bill sent by the County to the owner of each parcel of real property within the boundaries of the Gridley Maintenance Assessment District No. 6, and operation and maintenance assessment for the fiscal year commencing 2009/2010 and for each year thereafter, which assessment was collected from each land owner with the proportioning of the collection between the first installment and the second installment to be determined by the County Tax Collector; and

**WHEREAS**, Government Codes 54703 & 54718 provides the authority for the City to place the assessment on the tax roll.

**NOW, THEREFORE**, the City Council of the City of Gridley approved the assessment for 2023-2024 for the amount of \$ 559.44 without CPI increase to properties in "Exhibit A". The benefit is to be provided to the owner of each parcel of real property within the boundaries of the Gridley Maintenance Assessment District No. 6.

**I HEREBY CERTIFY** that this Resolution of the City Council of the City of Gridley was duly introduced and passed at a Special Meeting of the City Council of the City of Gridley held on the 27<sup>th</sup> day of June, 2023 by the following vote:

AYES: COUNCILMEMBERS

NOES: COUNCILMEMBERS

ABSENT: COUNCILMEMBERS

ABSTAIN: COUNCILMEMBERS

ATTEST:

APPROVE:

\_\_\_\_\_  
Cliff Wagner, City Administrator

\_\_\_\_\_  
Michael W. Farr, Mayor

EXHIBIT “A”

City of Gridley  
Maintenance Dist. 6  
(Bowwood Estates Subdivision)  
Tax Code 76008  
2023/2024

010370037000	559.44	76008
010370038000	559.44	76008
010370039000	559.44	76008
010370040000	559.44	76008
010370041000	559.44	76008
010370042000	559.44	76008



**A RESOLUTION OF THE CITY COUNCIL  
OF THE CITY OF GRIDLEY TO LEVY ASSESSMENT DISTRICT NO. 3 ON BUTTE COUNTY 2023-2024 TAX ROLL**

**WHEREAS**, the Gridley City Council previously approved the formation of Maintenance District #3 (Resolution No. 2004-R-065) to construct, operate and maintain various public improvements within the Heron Landing subdivision under provisions of the Improvement Act of 1911 (Streets and Highways Code Section 5000 and 5821,et seq); and

**WHEREAS**, the City Council of the City of Gridley has determined that it is appropriate and necessary to assess the expenses of maintenance and operation of the improvements upon the real property within the district to be benefited thereby; and

**WHEREAS**, the City Engineer for the City of Gridley caused a report to be prepared in the manner provided by law, including the improvement act of 1911, as well as the California State Constitution, Article XIII D, to set the amount and basis of the amounts to be assessed against each parcel within the Assessment District, the adjustments to be made to annual assessments based upon increases in the Consumer Price Index and other particulars relating to the District, and

**WHEREAS**, the Tax Collector of the County of Butte was requested to levy and add to the tax bill sent by the County to the owner of each parcel of real property within the boundaries of the Gridley Maintenance Assessment District No. 3, and operation and maintenance assessment for the fiscal year commencing 2005/2006, and for each year thereafter, which assessment was collected from each land owner with the proportioning of the collection between the first installment and the second installment to be determined by the County Tax Collector; and

**WHEREAS**, Government Codes 54703 & 54718 provides the authority for the City to place the assessment on the tax roll.

**NOW, THEREFORE**, the City Council of the City of Gridley approves the assessment for 2023-2024 for the amount of \$208.96 without a CPI increase (Exhibit "A"). The benefit is to be provided to the owner of each parcel of real property within the boundaries of the Gridley Maintenance Assessment District No.3.

**I HEREBY CERTIFY** that this Resolution of the City Council of the City of Gridley was duly introduced and passed at a Special Meeting of the City Council of the City of Gridley held on the 27<sup>th</sup> day of June, 2023 by the following vote:

AYES: COUNCIL MEMBERS

NOES: COUNCIL MEMBERS

ABSENT: COUNCIL MEMBERS

ABSTAIN: COUNCIL MEMBERS

ATTEST:

APPROVE:

\_\_\_\_\_  
Cliff Wagner, City Administrator

\_\_\_\_\_  
Michael W. Farr , Mayor

City of Gridley  
Maintenance District No. 3  
(Heron Landing Subdivision)  
76006  
2023/2024

Parcel Number	Amount	Tax Code	Authorzing Resolution
009220001000	208.96	76006	004-R-065/ 2013-R-024
009220002000	208.96	"	"
009220003000	208.96	"	"
009220004000	208.96	"	"
009220005000	208.96	"	"
009220006000	208.96	"	"
009220007000	208.96	"	"
009220008000	208.96	"	"
009220009000	208.96	"	"
009220010000	208.96	"	"
009220011000	208.96	"	"
009220012000	208.96	"	"
009220013000	208.96	"	"
009220014000	208.96	"	"
009220015000	208.96	"	"
009220016000	208.96	"	"
009220017000	208.96	"	"
009220018000	208.96	"	"
009220019000	208.96	"	"
009220020000	208.96	"	"
009220021000	208.96	"	"
009220022000	208.96	"	"
009220023000	208.96	"	"
009220024000	208.96	"	"
009220025000	208.96	"	"
009220026000	208.96	"	"
009220027000	208.96	"	"
009220028000	208.96	"	"
009220029000	208.96	"	"
009220030000	208.96	"	"
009220031000	208.96	"	"
009220032000	208.96	"	"
009220033000	208.96	"	"
009220034000	208.96	"	"
009220035000	208.96	"	"
009220036000	208.96	"	"
009220037000	208.96	"	"
009220038000	208.96	"	"
009220039000	208.96	"	"
009220040000	208.96	"	"
009220041000	208.96	"	"
009220042000	208.96	"	"
009220043000	208.96	"	"
009220044000	208.96	"	"
009220045000	208.96	"	"
009220046000	208.96	"	"
009220047000	208.96	"	"

City of Gridley  
Maintenance District No. 3  
(Heron Landing Subdivision)  
76006  
2023/2024

009220048000	208.96	"	"
009220049000	208.96	"	"
009220050000	208.96	"	"
009220051000	208.96	"	"
009220052000	208.96	"	"
009220053000	208.96	"	"
009220054000	3033.96	"	"
009220055000	208.96	"	"
009220056000	208.96	"	"
009220057000	208.96	"	"
009220058000	208.96	"	"
009220059000	208.96	"	"
009220060000	208.96	"	"
009220061000	208.96	"	"
009220062000	208.96	"	"
009220063000	208.96	"	"
009220064000	208.96	"	"
009220065000	208.96	"	"
009220066000	208.96	"	"
009220067000	208.96	"	"
009220068000	208.96	"	"
009220069000	208.96	"	"
009220070000	208.96	"	"
009220071000	208.96	"	"
009220072000	208.96	"	"
009220073000	208.96	"	"
009220074000	208.96	"	"
009220075000	208.96	"	"
009220076000	208.96	"	"
009220077000	208.96	"	"
009220078000	208.96	"	"
009220079000	208.96	"	"
009220080000	208.96	"	"
009220081000	208.96	"	"
009220082000	208.96	"	"
009220083000	208.96	"	"
009220084000	208.96	"	"
009220085000	208.96	"	"
009220086000	208.96	"	"
009220087000	208.96	"	"
009220088000	208.96	"	"
009220089000	208.96	"	"
009220090000	208.96	"	"
009230001000	208.96	"	"
009230002000	208.96	"	"
009230003000	208.96	"	"
009230004000	208.96	"	"
009230005000	208.96	"	"
009230006000	208.96	"	"

City of Gridley  
Maintenance District No. 3  
(Heron Landing Subdivision)  
76006  
2023/2024

009230007000	208.96	"	"
009230008000	208.96	"	"
009230009000	208.96	"	"
009230010000	208.96	"	"
009230011000	208.96	"	"
009230012000	208.96	"	"
009230013000	208.96	"	"
009230014000	208.96	"	"
009230015000	208.96	"	"
009230016000	208.96	"	"
009230017000	208.96	"	"
009230018000	208.96	"	"
009230019000	208.96	"	"
009230020000	208.96	"	"
009230021000	208.96	"	"
009230022000	208.96	"	"
009230023000	208.96	"	"
009230024000	208.96	"	"
009230025000	208.96	"	"
009230026000	208.96	"	"
009230027000	208.96	"	"
009230028000	208.96	"	"
009230029000	208.96	"	"
009230030000	208.96	"	"
009230031000	208.96	"	"
009230032000	208.96	"	"
009230033000	208.96	"	"
009230034000	208.96	"	"
009230035000	208.96	"	"
009230036000	208.96	"	"
009230037000	208.96	"	"
009230038000	208.96	"	"
009230039000	208.96	"	"
009230040000	208.96	"	"
009230041000	208.96	"	"
009230042000	208.96	"	"
009230043000	208.96	"	"
009230044000	208.96	"	"
009230045000	208.96	"	"
009230046000	208.96	"	"
009230047000	208.96	"	"
009230048000	208.96	"	"
009230049000	208.96	"	"
009230050000	208.96	"	"
009230051000	208.96	"	"
009230052000	208.96	"	"
009230053000	208.96	"	"
009230054000	208.96	"	"
009230055000	208.96	"	"

City of Gridley  
Maintenance District No. 3  
(Heron Landing Subdivision)  
76006  
2023/2024

009230056000	208.96	"	"
009230057000	208.96	"	"
009230058000	208.96	"	"
009230059000	208.96	"	"
009230060000	208.96	"	"
009230061000	208.96	"	"
009230062000	208.96	"	"
009230063000	208.96	"	"
009230064000	208.96	"	"
009240001000	208.96	"	"
009240002000	208.96	"	"
009240003000	208.96	"	"
009240004000	208.96	"	"
009240005000	208.96	"	"
009240006000	208.96	"	"
009240007000	208.96	"	"
009240008000	208.96	"	"
009240009000	208.96	"	"
009240010000	208.96	"	"
009240011000	208.96	"	"
009240012000	208.96	"	"
009240013000	208.96	"	"
009240014000	208.96	"	"
009240015000	208.96	"	"
009240016000	208.96	"	"
009240017000	208.96	"	"
009240018000	208.96	"	"
009240019000	208.96	"	"
009240020000	208.96	"	"
009240021000	208.96	"	"
009240022000	208.96	"	"
009240023000	208.96	"	"
009240024000	208.96	"	"
009240025000	208.96	"	"
009240026000	208.96	"	"
009240027000	208.96	"	"
009240028000	208.96	"	"
009240029000	208.96	"	"
009240030000	208.96	"	"
009240031000	208.96	"	"
009240032000	208.96	"	"
009240033000	208.96	"	"
009240034000	208.96	"	"
009240035000	208.96	"	"
009240036000	208.96	"	"
009240037000	208.96	"	"
009240038000	208.96	"	"
009240039000	208.96	"	"
009240040000	208.96	"	"

City of Gridley  
Maintenance District No. 3  
(Heron Landing Subdivision)  
76006  
2023/2024

009240041000	208.96	"	"
009240042000	208.96	"	"
009240043000	208.96	"	"
009240044000	208.96	"	"
009240045000	208.96	"	"
009240046000	208.96	"	"
009240047000	208.96	"	"
009240048000	208.96	"	"
009240049000	208.96	"	"
009240050000	208.96	"	"
009240051000	208.96	"	"
009240052000	208.96	"	"
009240053000	208.96	"	"
009240054000	208.96	"	"
009240055000	208.96	"	"
009240056000	208.96	"	"
009240057000	208.96	"	"
009240058000	208.96	"	"
009240059000	208.96	"	"
009240060000	208.96	"	"
009240061000	208.96	"	"
009240062000	208.96	"	"
009240063000	208.96	"	"
009240064000	208.96	"	"
009240065000	208.96	"	"
009240066000	208.96	"	"
009240067000	208.96	"	"
009240068000	208.96	"	"
009240069000	208.96	"	"
009240070000	208.96	"	"
009240071000	208.96	"	"
009240072000	208.96	"	"
009240073000	208.96	"	"
009240074000	208.96	"	"
009240075000	208.96	"	"
009250001000	208.96	"	"
009250002000	208.96	"	"
009250003000	208.96	"	"
009250004000	208.96	"	"
009250005000	208.96	"	"
009250006000	208.96	"	"
009250007000	208.96	"	"
009250008000	208.96	"	"
009250009000	208.96	"	"
009250010000	208.96	"	"
009250011000	208.96	"	"
009250012000	208.96	"	"
009250013000	208.96	"	"
009250014000	208.96	"	"

City of Gridley  
Maintenance District No. 3  
(Heron Landing Subdivision)  
76006  
2023/2024

009250015000	208.96	"	"
009250016000	208.96	"	"
009250017000	208.96	"	"
009250018000	208.96	"	"
009250019000	208.96	"	"
009250020000	208.96	"	"
009250021000	208.96	"	"
009250022000	208.96	"	"
009250023000	208.96	"	"
009250024000	208.96	"	"
009250025000	208.96	"	"
009250026000	208.96	"	"
009250027000	208.96	"	"
009250028000	208.96	"	"
009250029000	208.96	"	"
009250030000	208.96	"	"
009250031000	208.96	"	"
009250032000	208.96	"	"
009250033000	208.96	"	"
009250034000	208.96	"	"
009250035000	208.96	"	"
009250036000	208.96	"	"
009250037000	208.96	"	"
009250038000	208.96	"	"
009250039000	208.96	"	"
009250040000	208.96	"	"
009250041000	208.96	"	"
009250042000	208.96	"	"
009250043000	208.96	"	"
009250044000	208.96	"	"
009250045000	208.96	"	"
009250046000	208.96	"	"
009250047000	208.96	"	"
009250048000	208.96	"	"
009250049000	208.96	"	"
009250050000	208.96	"	"
009250051000	208.96	"	"
009250052000	208.96	"	"
009250053000	208.96	"	"
009250054000	208.96	"	"
009250055000	208.96	"	"
009250056000	208.96	"	"
009250057000	208.96	"	"
009250058000	208.96	"	"
009250059000	208.96	"	"
009250060000	208.96	"	"
009250061000	208.96	"	"
009250062000	208.96	"	"
009250063000	208.96	"	"

City of Gridley  
Maintenance District No. 3  
(Heron Landing Subdivision)  
76006  
2023/2024

009250064000	208.96	"	"
--------------	--------	---	---



**A RESOLUTION OF THE CITY COUNCIL  
OF THE CITY OF GRIDLEY TO LEVY ASSESSMENT DISTRICT NO.2 ON BUTTE COUNTY 2023-2024 TAX ROLL**

**WHEREAS**, the Gridley City Council previously approved the formation of Maintenance District #2 (Resolution No. 2004-R-004) to construct, operate and maintain various public improvements within the Eagle Meadows subdivision under provisions of the Improvement Act of 1911 (Streets and Highways Code Section 5000 and 5821, et seq); and

**WHEREAS**, the City Council of the City of Gridley has determined that it is appropriate and necessary to assess the expenses of maintenance and operation of the improvements upon the real property within the district to be benefited thereby; and

**WHEREAS**, the City Engineer for the City of Gridley caused a report to be prepared in the manner provided by law, including the improvement act of 1911, as well as the California State Constitution, Article XIII D, to set the amount and basis of the amounts to be assessed against each parcel within the Assessment District, the adjustments to be made to annual assessments based upon increases in the Consumer Price Index and other particulars relating to the District, and

**WHEREAS**, pursuant to the provisions of Proposition 218, namely Article XIII D of the California Constitution, the City, after giving due and proper notice as required by Proposition 218, at its meeting of October 17, 2005 conducted a public hearing on the proposed modifications to the assessment pursuant to California Constitution Article XIII D, Section 4(e); and

**WHEREAS**, the Tax Collector of the County of Butte was requested to levy and add to the tax bill sent by the County to the owner of each parcel of real property within the boundaries of the Gridley Maintenance Assessment District No. 2, and operation and maintenance assessment for the fiscal year commencing 2005/2006, and for each year thereafter, which assessment was collected from each land owner with the proportioning of the collection between the first installment and the second installment to be determined by the County Tax Collector; and

**WHEREAS**, Government Codes 54703 & 54718 provides the authority for the City to place the assessment on the tax roll.

**NOW, THEREFORE**, the City Council of the City of Gridley approves the assessment for 2023-2024 for the amount of \$570.82 without a CPI increase (Exhibit "A"). The benefit is to be provided to the owner of each parcel of real property within the boundaries of the Gridley Maintenance Assessment District No.2.

**I HEREBY CERTIFY** that this Resolution of the City Council of the City of Gridley was duly introduced and passed at a Special Meeting of the City Council of the City of Gridley held on the 27<sup>th</sup> day of June, 2023 by the following vote:

AYES: COUNCIL MEMBERS  
NOES: COUNCIL MEMBERS  
ABSENT: COUNCIL MEMBERS  
ABSTAIN: COUNCIL MEMBERS

ATTEST:

APPROVE:

\_\_\_\_\_  
Cliff Wagner, City Administrator

\_\_\_\_\_  
Michael W. Farr, Mayor

CITY OF GRIDLEY  
Maintenance Dist # 2  
(Eagle Meadow Subdivision)  
76005  
2023-2024

009300001000	570.82	76005
009300002000	570.82	76005
009300003000	570.82	76005
009300004000	570.82	76005
009300005000	570.82	76005
009300006000	570.82	76005
009300007000	570.82	76005
009300008000	570.82	76005
009300009000	570.82	76005
009300010000	570.82	76005
009300011000	570.82	76005
009300012000	570.82	76005
009300013000	570.82	76005
009300014000	570.82	76005
009300015000	570.82	76005
009300016000	570.82	76005
009300017000	570.82	76005
009300018000	570.82	76005
009300019000	570.82	76005
009300020000	570.82	76005
009300021000	570.82	76005
009300022000	570.82	76005
009300023000	570.82	76005
009300024000	570.82	76005
009300025000	570.82	76005
009300026000	570.82	76005
009300027000	570.82	76005
009300028000	570.82	76005
009300029000	570.82	76005
009300030000	570.82	76005
009300031000	570.82	76005
009300032000	570.82	76005
009300033000	570.82	76005
009300034000	570.82	76005
009300035000	570.82	76005
009300036000	570.82	76005
009300037000	570.82	76005
009300038000	570.82	76005
009300039000	570.82	76005
009300040000	570.82	76005
009300041000	570.82	76005
009300042000	570.82	76005
009300043000	570.82	76005
009300044000	570.82	76005
009300045000	570.82	76005
009300046000	570.82	76005
009300047000	570.82	76005

CITY OF GRIDLEY  
Maintenance Dist # 2  
(Eagle Meadow Subdivision)  
76005  
2023-2024

009300048000	570.82	76005
009300049000	570.82	76005
009300050000	570.82	76005
009300051000	570.82	76005
009300052000	570.82	76005
009300053000	570.82	76005
009300054000	570.82	76005
009300055000	570.82	76005
009300056000	570.82	76005
009300057000	570.82	76005
009300058000	570.82	76005
009300059000	570.82	76005
009300060000	570.82	76005
009300061000	570.82	76005
009300062000	570.82	76005
009300063000	570.82	76005
009300064000	570.82	76005
009300065000	570.82	76005
009300066000	570.82	76005
009300067000	570.82	76005
009300068000	570.82	76005
009300069000	570.82	76005
009300070000	570.82	76005
009300071000	570.82	76005
009300072000	570.82	76005
009300073000	570.82	76005
009300074000	570.82	76005
009300075000	570.82	76005
009300076000	570.82	76005
009300077000	570.82	76005
009300078000	570.82	76005
009300079000	570.82	76005
009300080000	570.82	76005
009300081000	570.82	76005
009300082000	570.82	76005
009300083000	570.82	76005
009300084000	570.82	76005
009300085000	570.82	76005
009300086000	570.82	76005
009300087000	570.82	76005
009300088000	570.82	76005
009300089000	570.82	76005
009300090000	570.82	76005
009300091000	570.82	76005
009300092000	570.82	76005
009300093000	570.82	76005
009300094000	570.82	76005
009300095000	570.82	76005
009300096000	570.82	76005

CITY OF GRIDLEY  
Maintenance Dist # 2  
(Eagle Meadow Subdivision)  
76005  
2023-2024

009300097000	570.82	76005
009300098000	570.82	76005
009300099000	570.82	76005
009300100000	570.82	76005
009300101000	570.82	76005
009300102000	570.82	76005
009300103000	570.82	76005
009310001000	570.82	76005
009310002000	570.82	76005
009310003000	570.82	76005
009310004000	570.82	76005
009310005000	570.82	76005
009310006000	570.82	76005
009310007000	570.82	76005
009310008000	570.82	76005
009310009000	570.82	76005
009310010000	570.82	76005
009310011000	570.82	76005
009310012000	570.82	76005
009310013000	570.82	76005
009310014000	570.82	76005
009310015000	570.82	76005
009310016000	570.82	76005
009310018000	570.82	76005
009310019000	570.82	76005